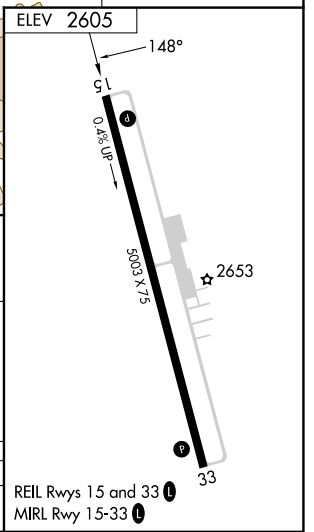
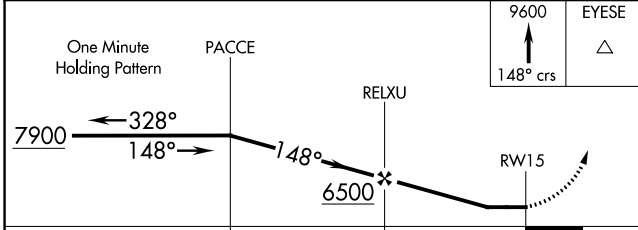
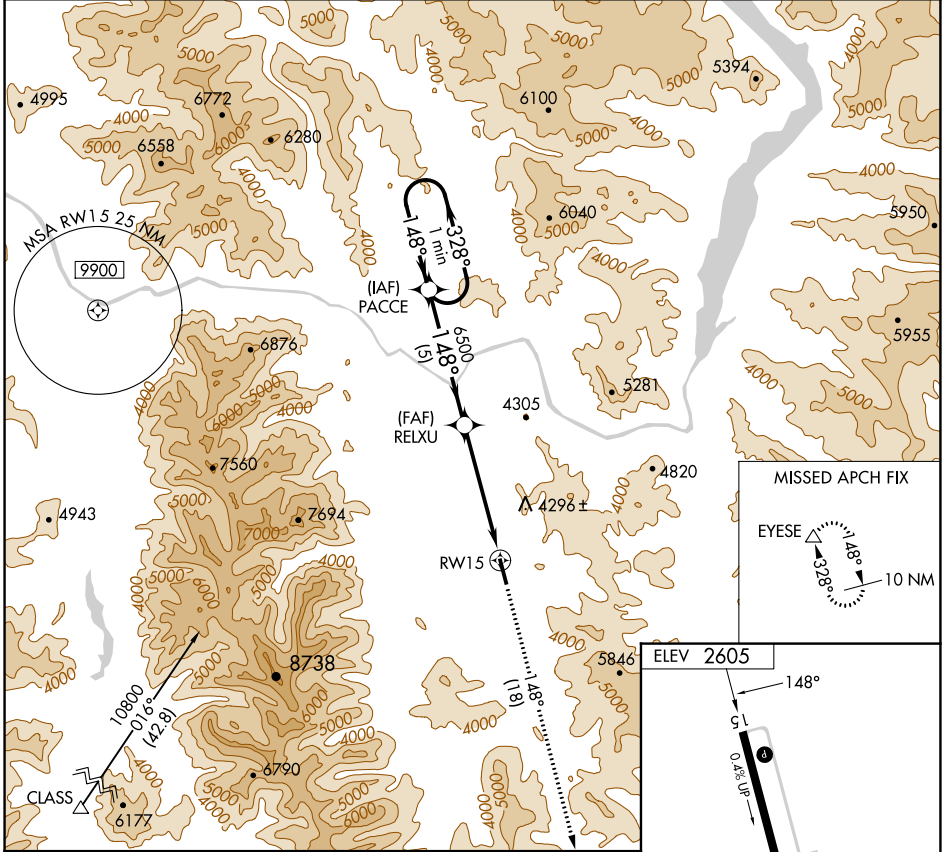


APP CRS 148°	Rwy Idg TDZE Apt Elev	N/A N/A 2605
------------------------	-----------------------------	---

GPS-A
LIBBY (S59)

NA	Procedure NA at night. Rwy 15, 33 helicopter visibility reduction below 1 SM NA. When local altimeter setting not received, procedure NA.	MISSED APPROACH: Climb to 9600 on 148° course to EYESE and hold.
-----------	---	--

AWOS-A 118.575	SEATTLE CENTER 123.95 290.55	UNICOM 122.8 (CTAF)
--------------------------	--	-------------------------------



CATEGORY	A	B	C	D
CIRCLING	5240-1¼ 2635 (2700-1¼)	5240-1½ 2635 (2700-1½)	NA	

REIL Rwys 15 and 33 **(L)**
MIRL Rwy 15-33 **(L)**

NW-1, 05 SEP 2024 to 03 OCT 2024

NW-1, 05 SEP 2024 to 03 OCT 2024