

NDB FMZ 392	APP CRS 005°	Rwy ldg TDZE 1636 Apt Elev 1636
-----------------------	------------------------	---

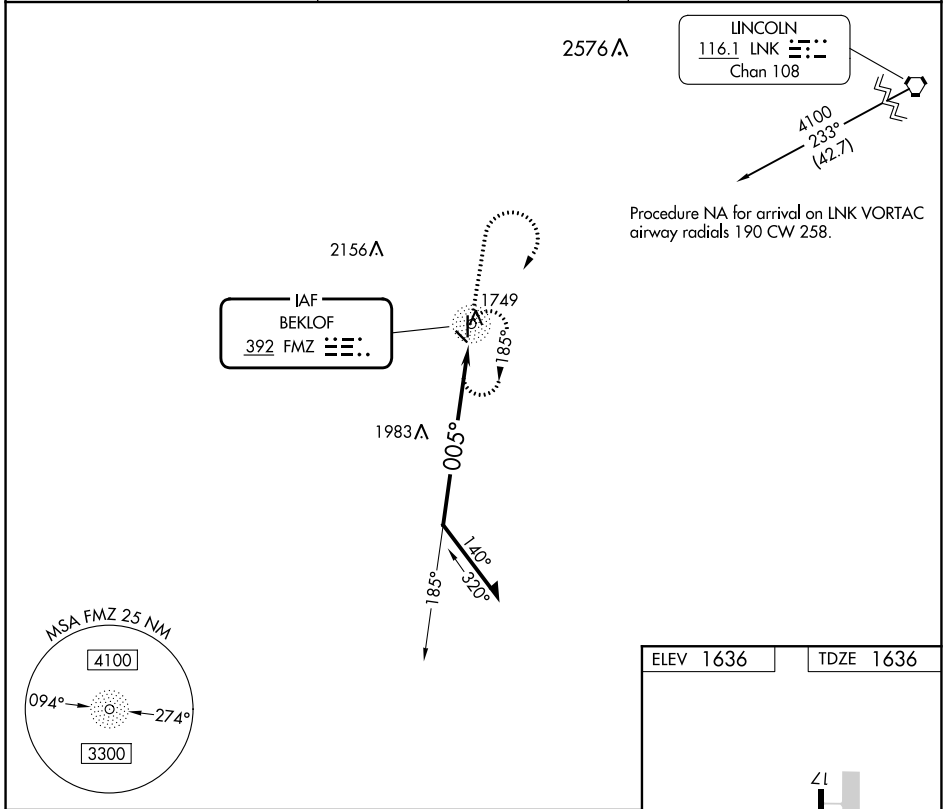
NDB RWY 35

FAIRMONT STATE (F^MZ)

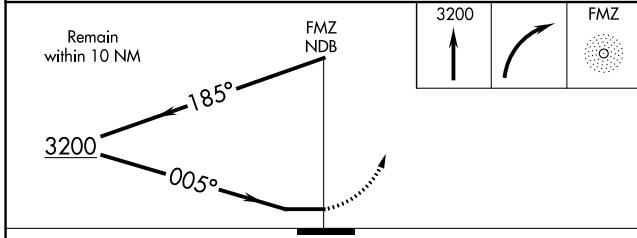
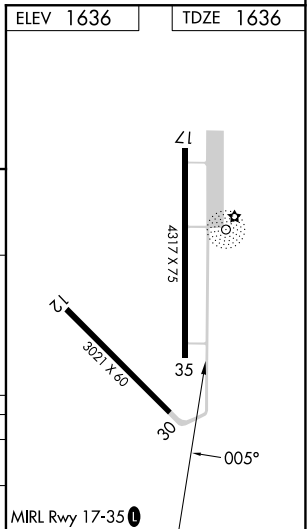
⚠ Circling Rwy 12, 30 NA at night.
⚠ NA Use York altimeter setting; when not received, use Hebron altimeter setting and increase all MDAs 40 feet.

MISSED APPROACH: Climb to 3200 then right turn direct FMZ NDB and hold.

JYR AWOS-3 124.175	MINNEAPOLIS CENTER 119.4 278.8	CTAF 122.90
------------------------------	--	-----------------------



Procedure NA for arrival on LNK VORTAC airway radials 190 CW 258.



CATEGORY	A	B	C	D
S-35	2420-1 784 (800-1)	2420-1¼ 784 (800-1¼)	NA	
C CIRCLING	2420-1 784 (800-1)	2420-1¼ 784 (800-1¼)	NA	

NC-2, 05 SEP 2024 to 03 OCT 2024

NC-2, 05 SEP 2024 to 03 OCT 2024