

WAAS CH <b>69414</b> <b>W17A</b>	APP CRS <b>177°</b>	Rwy Idg <b>4317</b> TDZE <b>1636</b> Apt Elev <b>1636</b>
--	------------------------	---

# RNAV (GPS) RWY 17

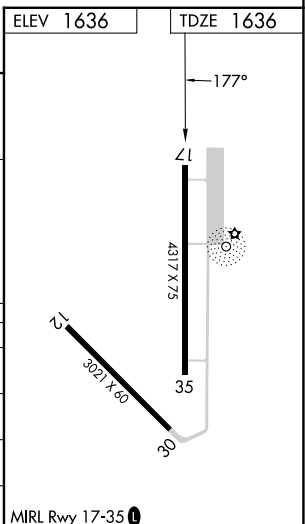
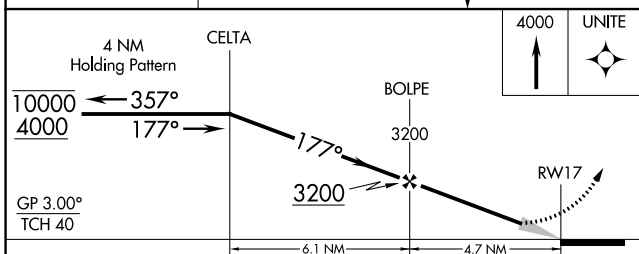
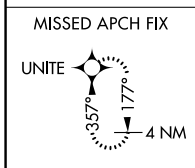
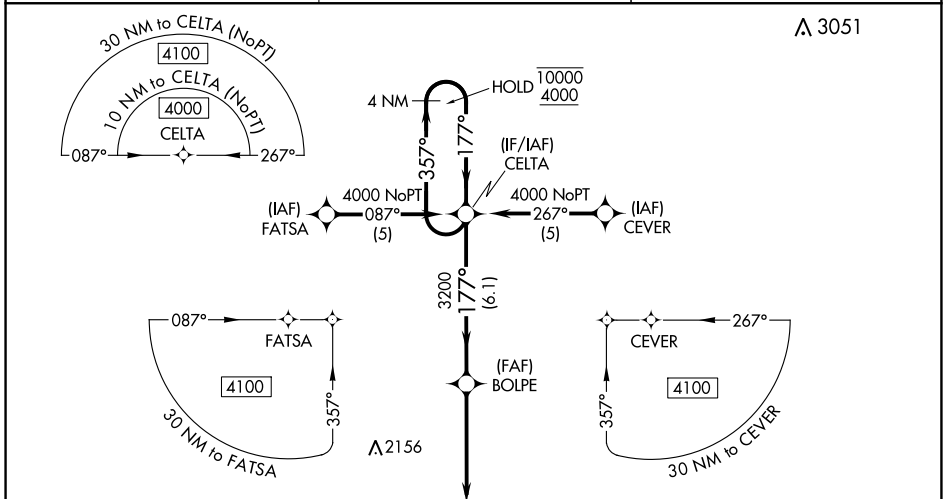
FAIRMONT STATE (F<sup>M</sup>MZ)

RNP APCH - GPS.

**NA** Circling to Rwy 12, 30 NA at night. Baro-VNAV NA. Use York altimeter setting; when not received use Hebron altimeter setting and increase LPV DA to 1965 feet and all visibilities  $\frac{1}{8}$  SM; increase LNAV/VNAV DA to 2074 feet and all visibilities  $\frac{1}{8}$  SM; and increase all MDAs 40 feet.

MISSED APPROACH: Climb to 4000 direct UNITE and hold.

JYR AWOS-3 <b>124.175</b>	MINNEAPOLIS CENTER <b>119.4 278.8</b>	CTAF <b>122.9</b>
------------------------------	--	----------------------



CATEGORY	A	B	C	D
LPV DA	1934- $\frac{7}{8}$	298 (300- $\frac{7}{8}$ )		NA
LNAV/VNAV DA	2043-1 $\frac{1}{8}$	407 (500-1 $\frac{1}{8}$ )		NA
LNAV MDA	2240-1	604 (700-1)		NA
<b>C</b> CIRCLING	2240-1	604 (700-1)		NA

NC-2, 05 SEP 2024 to 03 OCT 2024

NC-2, 05 SEP 2024 to 03 OCT 2024