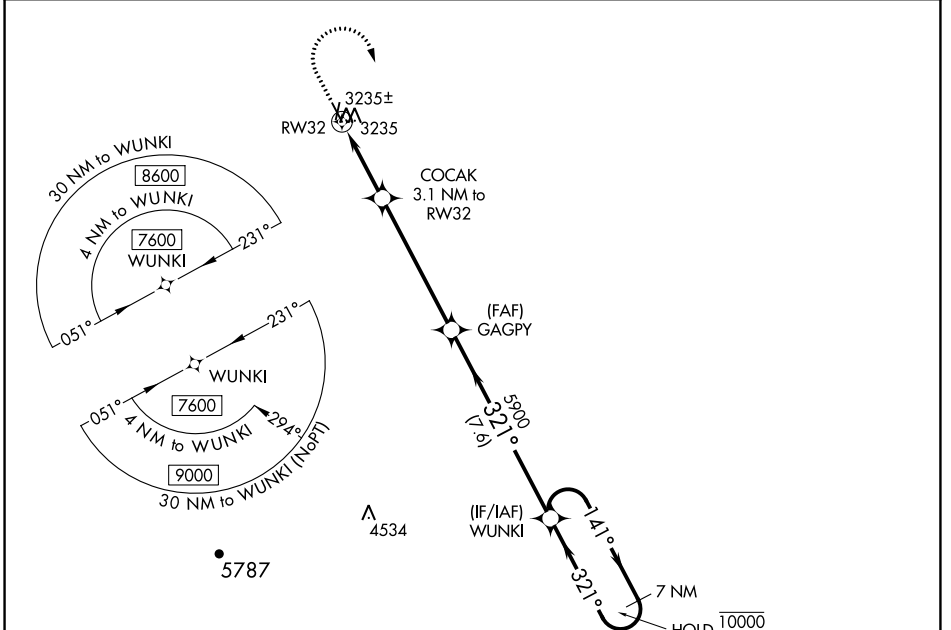


WAAS CH 82728 W32A	APP CRS 321°	Rwy Idg TDZE Apt Elev	4501 3180 3191
--	------------------------	-----------------------------	---

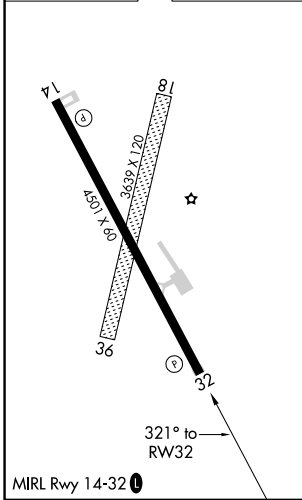
RNAV (GPS) RWY 32

BELLE FOURCHE MUNI (EFC)

RNP APCH.		MISSED APPROACH: Climb to 3800 then climbing right turn to 7600 direct WUNKI and hold. Continue climb-in-hold to 7600.
NA Baro-VNAV NA. Use Ellsworth altimeter setting.	DENVER CENTER 127.95 338.2	



ELEV 3191	TDZE 3180
-----------	-----------



3800 		7600 		WUNKI 		VGSI and RNAV glidepath not coincident (VGSI Angle 3.00/TCH 33).		7 NM Holding Pattern		
*LNAV only RW32		COCAK 3.1 NM to RW32		GAGPY 5900		WUNKI		141° → 10000 ← 321° 7600		
4200*		5900		5900		GP 3.00° TCH 40				
3.1 NM		5.3 NM		7.6 NM						
CATEGORY	A	B	C	D						
LPV DA	3553-1		373 (400-1)		NA					
LNAV/VNAV DA	3558-1		378 (400-1)		NA					
LNAV MDA	3660-1		480 (500-1)		3660-1 ³ / ₈		480 (500-1 ³ / ₈)		NA	
CIRCLING	3780-1		3820-1		3820-1 ³ / ₄		629 (700-1 ³ / ₄)		NA	
	589 (600-1)		629 (700-1)							

NC-1, 05 SEP 2024 to 03 OCT 2024

NC-1, 05 SEP 2024 to 03 OCT 2024