

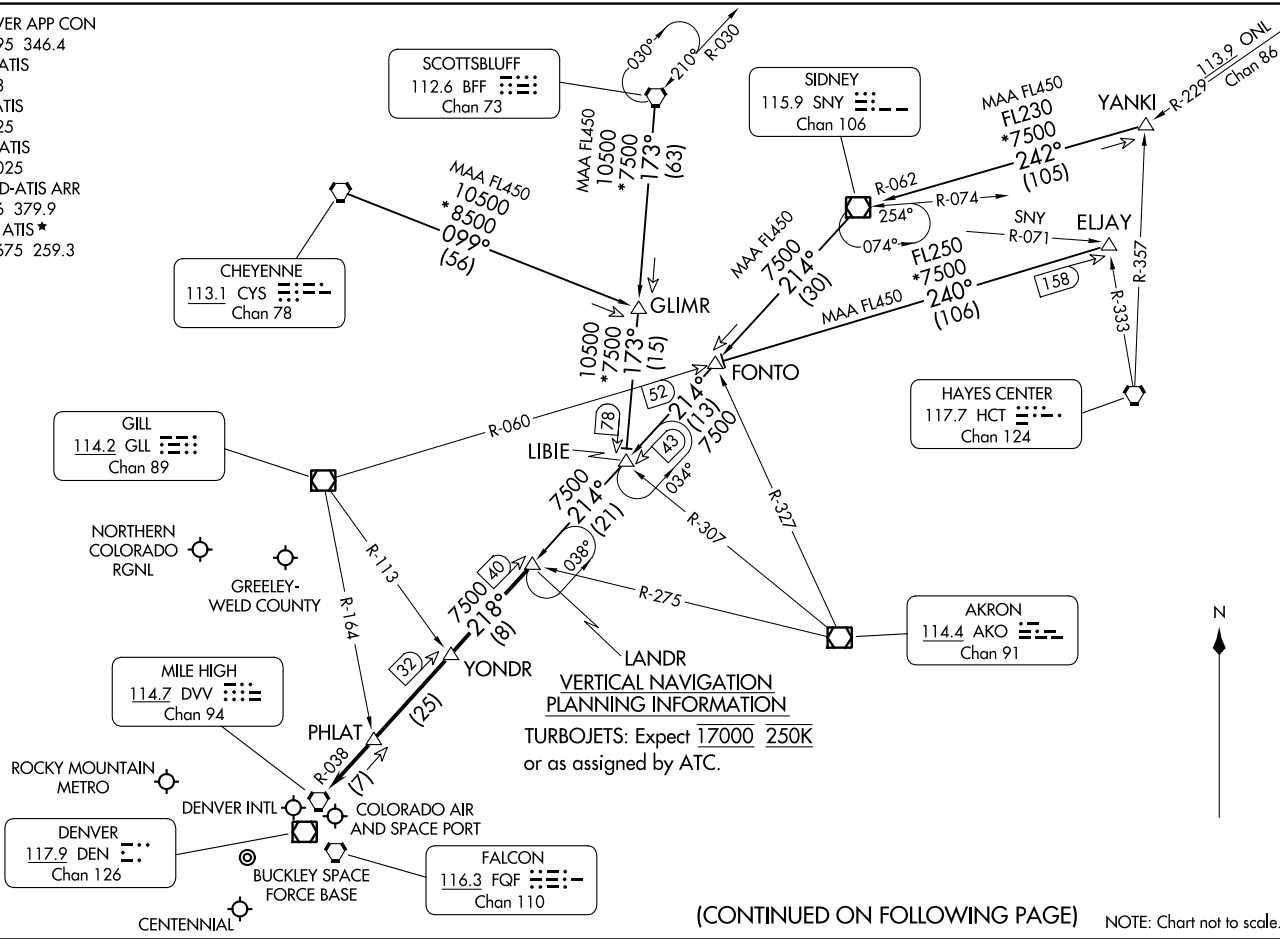
LANDR THREE ARRIVAL
(LANDR.LANDR3) 20APR23

(LANDR.LANDR3) 23334
LANDR THREE ARRIVAL

AL-907Z (FAA)

DENVER, COLORADO

DENVER APP CON
124.95 346.4
APA ATIS
120.3
BJC ATIS
126.25
CFO ATIS
119.025
DEN D-ATIS ARR
125.6 379.9
KBKF ATIS*
119.675 259.3



DENVER, COLORADO

(CONTINUED ON FOLLOWING PAGE)

NOTE: Chart not to scale.

ARRIVAL ROUTE DESCRIPTION

CHEYENNE TRANSITION (CYS.LANDR3): From over CYS VORTAC on CYS R-099 and BFF R-173 to LIBIE, then on SNY R-214 and DVV R-038 to LANDR. Thence. . . .

ELJAY TRANSITION (ELJAY.LANDR3): From over ELJAY on GLL R-060 to FONTO, then on SNY R-214 and DVV R-038 to LANDR. Thence. . . .

SCOTTSBLUFF TRANSITION (BFF.LANDR3): From over BFF VORTAC on BFF R-173 to LIBIE, then on SNY R-214 and DVV R-038 to LANDR. Thence. . . .

SIDNEY TRANSITION (SNY.LANDR3): From over SNY VOR/DME on SNY R-214 to FONTO, then on SNY R-214 and DVV R-038 to LANDR. Thence. . . .

YANKI TRANSITION (YANKI.LANDR3): From over YANKI on SNY R-062 to SNY VOR/DME, then on SNY R-214 and DVV R-038 to LANDR. Thence. . . .

. . . .from over LANDR on DVV R-038 to DVV VORTAC. Expect RADAR vectors to the final approach course at or before DVV VORTAC.

SW-1, 05 SEP 2024 to 03 OCT 2024

SW-1, 05 SEP 2024 to 03 OCT 2024