

POWER ONE ARRIVAL  
(POWER.POWDR1) 30JAN20

DENVER APP CON  
120.35 379.3  
APA ATIS  
120.3  
BJC ATIS  
126.25  
CFO ATIS  
119.025  
DEN D-ATIS ARR  
125.6 379.9  
KBKF ATIS\*  
119.675 259.3

GILL  
114.2 GLL  
Chan 89

NORTHERN  
COLORADO  
RGNL

GREELEY-WELD  
COUNTY

MILE HIGH  
114.7 DVV  
Chan 94

ROCKY  
MOUNTAIN  
METRO

DENVER  
INTL

DENVER  
117.9 DEN  
Chan 126

COLORADO AIR AND  
SPACE PORT

BUCKLEY  
SPACE FORCE  
BASE

FALCON  
116.3 FQF  
Chan 110

CENTENNIAL

POWER  
VERTICAL NAVIGATION  
PLANNING INFORMATION

TURBOJETS: Expect FL190 250K  
or as assigned by ATC.

KREMMLING  
113.8 RLG  
Chan 85

RED TABLE  
113.0 DBL  
Chan 77

GRAND JUNCTION  
112.4 JNC  
Chan 71

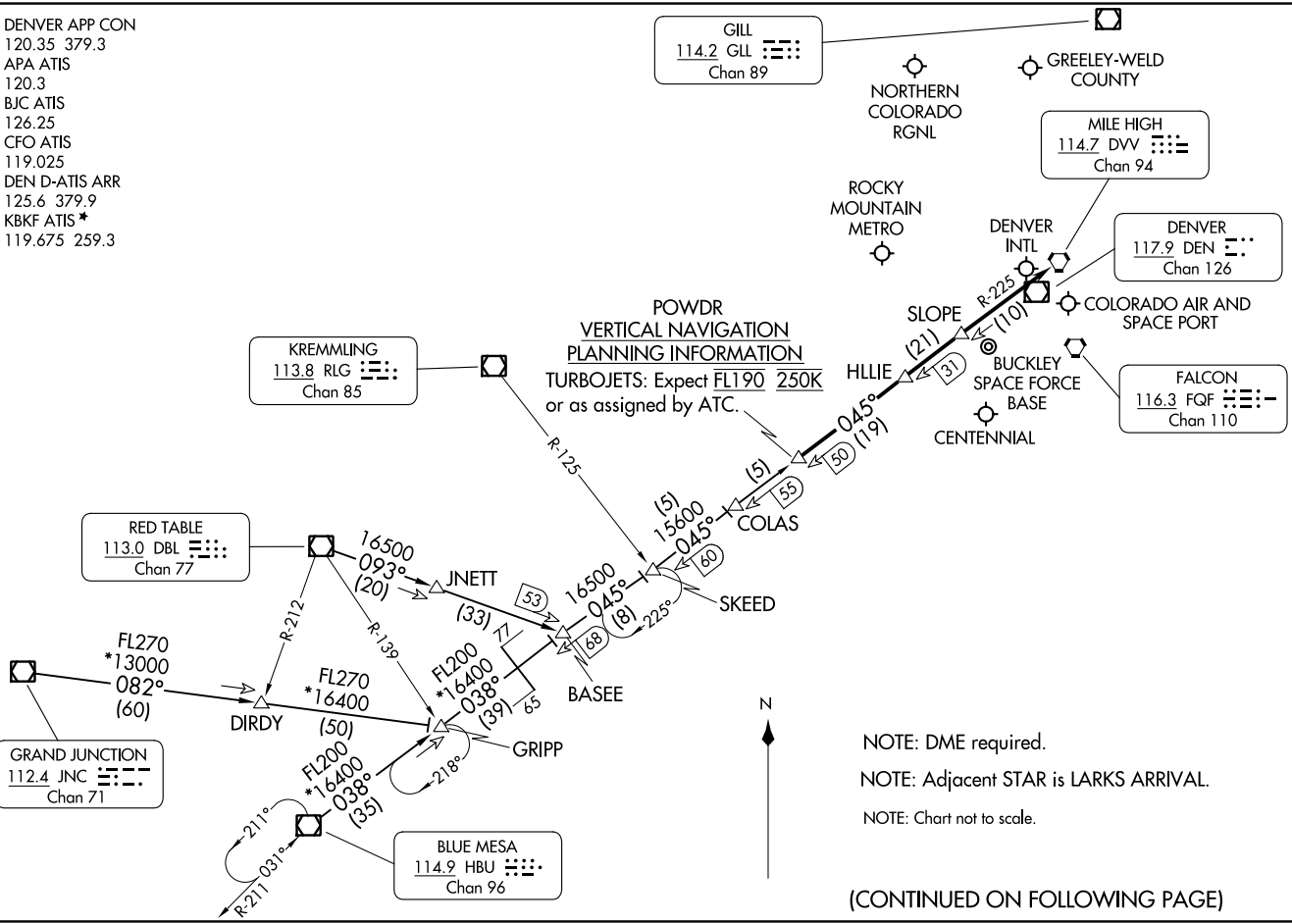
BLUE MESA  
114.9 HBU  
Chan 96

DENVER, COLORADO

(POWER.POWDR1) 23334  
POWER ONE ARRIVAL

AL-9077 (FAA)

DENVER, COLORADO



NOTE: DME required.  
NOTE: Adjacent STAR is LARKS ARRIVAL.  
NOTE: Chart not to scale.

(CONTINUED ON FOLLOWING PAGE)

ARRIVAL ROUTE DESCRIPTION

BLUE MESA TRANSITION (HBU.POWDR1): From over HBU VOR/DME on HBU R-038 to GRIPP then on HBU R-038 and DVV R-225 to BASEE then on DVV R-225 to POWDR. Thence. . . .

GRAND JUNCTION TRANSITION (JNC.POWDR1): From over JNC VOR/DME on JNC R-082 to GRIPP; then on HBU R-038 and DVV R-225 to BASEE then on DVV R-225 to POWDR. Thence. . . .

RED TABLE TRANSITION (DBL.POWDR1): From over DBL VOR/DME on DBL R-093 and DVV R-225 to POWDR. Thence. . . .

. . . .from over POWDR on the DVV VORTAC R-225 to HLLIE, then on DVV VORTAC R-225 to SLOPE, then on DVV VORTAC R-225 to DVV. Expect RADAR vectors to the final approach course at or before DVV VORTAC.

SW-1, 05 SEP 2024 to 03 OCT 2024

SW-1, 05 SEP 2024 to 03 OCT 2024