

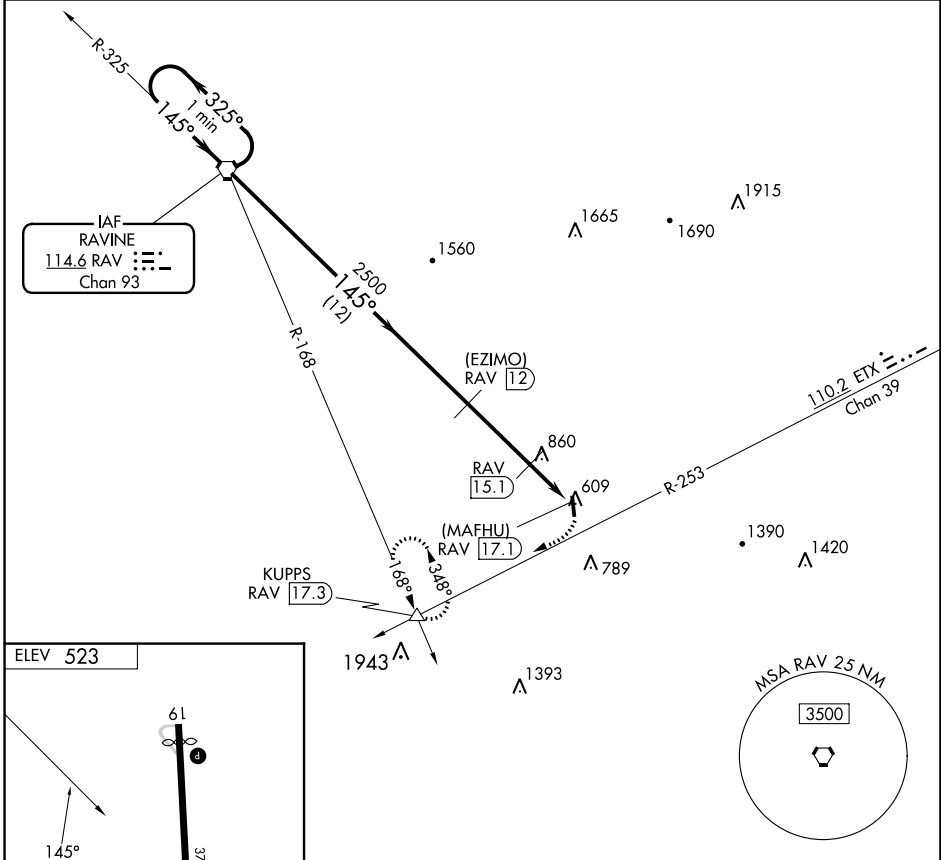
VORTAC RAV 114.6 Chan 93	APP CRS 145°	Rwy Idg TDZE Apt Elev	N/A N/A 523
--	------------------------	-----------------------------	--

VOR/DME or GPS-A

DECK (9D4)

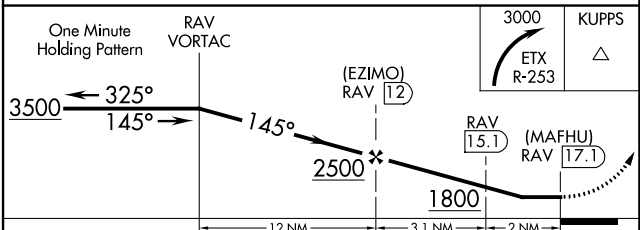
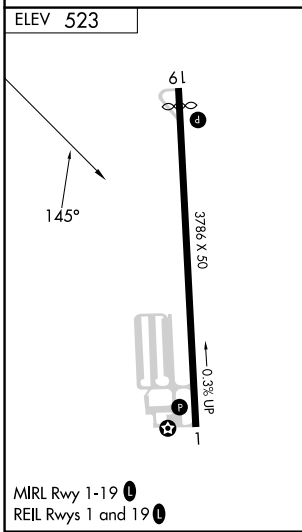
▼ Use Harrisburg Intl, PA altimeter setting. If not received, procedure NA. Circling Rwy 1 NA at night.
▲ NA MISSED APPROACH: Climbing right turn to 3000, intercept the ETX VORTAC R-253 to KUPPS INT and hold.

AWOS-2 118.45	RDG ASOS 127.1	HARRISBURG APP CON 118.25 269.45	UNICOM 122.8 (CTAF) 0
-------------------------	--------------------------	--	---------------------------------



NE-4, 05 SEP 2024 to 03 OCT 2024

NE-4, 05 SEP 2024 to 03 OCT 2024



CATEGORY	A	B	C	D
CIRCLING	1140-1 617 (700-1)	1160-1 637 (700-1)	1160-1¾ 637 (700-1¾)	NA