

WAAS CH <b>86426</b> <b>W21A</b>	APP CRS <b>214°</b>	Rwy Idg <b>5002</b> TDZE <b>1348</b> Apt Elev <b>1348</b>
--	------------------------	---

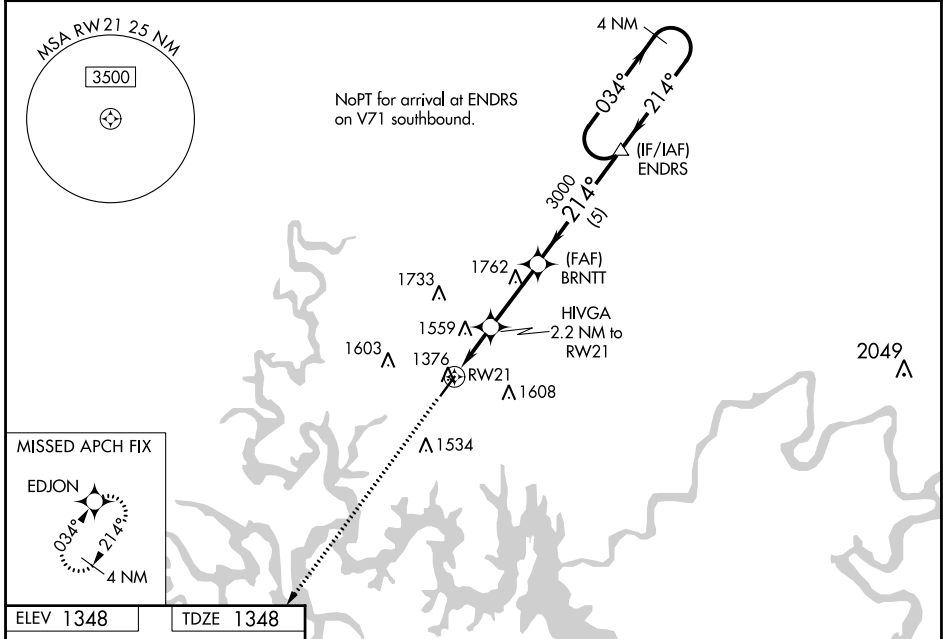
# RNAV (GPS) RWY 21

BRANSON WEST MUNI - EMERSON FIELD (F'WB)

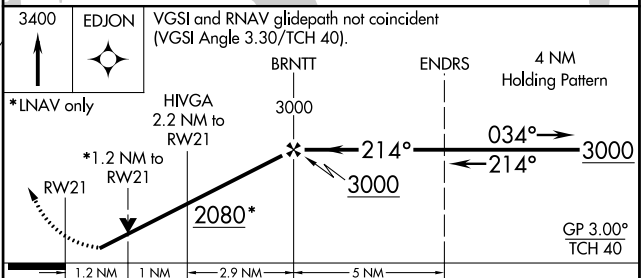
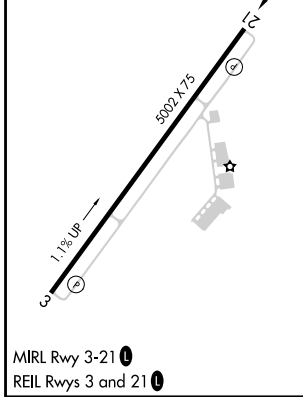
**⚠** DME/DME RNP-0.3 NA. Helicopter visibility reduction below 3/4 SM NA. When local altimeter setting not received, use Branson altimeter setting; increase all DA 39 feet and all MDA 40 feet; increase LPV Cat A/B visibility to 1 mile and LNAV/VNAV Cat A/B visibility to 1 1/4. For uncompensated Baro-VNAV systems, LNAV/VNAV NA below -17°C (2°F) or above 54°C (130°F). VDP and Baro-VNAV NA when using Branson altimeter setting.

**⚠ NA** MISSED APPROACH: Climb to 3400 direct EDJON and hold.

AWOS-3PT <b>119.725</b>	SPRINGFIELD APP CON <b>126.35</b>	UNICOM <b>123.0 (CTAF) 0</b>
----------------------------	--------------------------------------	---------------------------------



ELEV 1348	TDZE 1348
-----------	-----------



CATEGORY	A	B	C	D
LPV DA	1598-1	250 (300-1)		NA
LNAV/VNAV DA	1832-1 1/2	485 (500-1 1/2)		NA
LNAV MDA	1800-1	452 (500-1)		NA
CIRCLING	1900-1	552 (600-1)		NA

NC-3, 05 SEP 2024 to 03 OCT 2024

NC-3, 05 SEP 2024 to 03 OCT 2024