

WAAS CH <b>72726</b> <b>W03A</b>	APP CRS <b>034°</b>	Rwy Idg TDZE Apt Elev	<b>5002</b> <b>1308</b> <b>1348</b>
--	------------------------	-----------------------------	---

# RNAV (GPS) RWY 3

BRANSON WEST MUNI - EMERSON FIELD (F'WB)

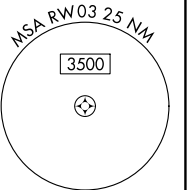
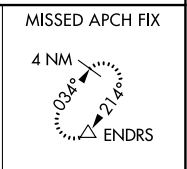
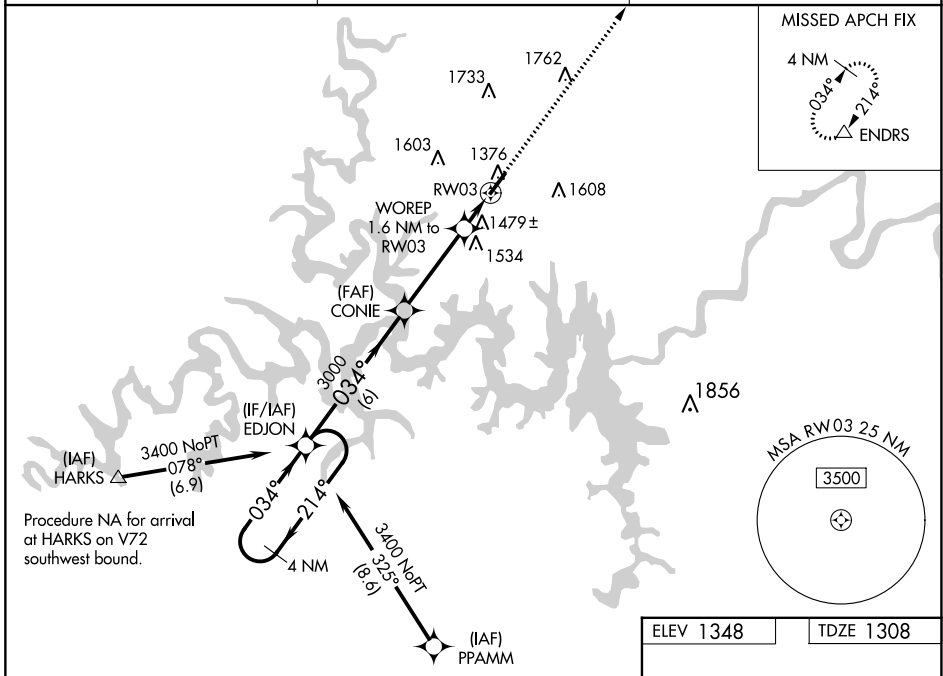
**NA** DME/DME RNP-0.3 NA. When local altimeter setting not received, use Branson altimeter setting; increase all DA 39 feet and all MDA 40 feet; increase LNAV/VNAV Cat A/B visibility to 1½ mile. For uncompensated Baro-VNAV systems, LNAV/VNAV NA below -17°C (2°F) or above 54°C (130°F). Baro-VNAV NA when using Branson altimeter setting.

MISSED APPROACH: Climb to 3000 direct ENDRS and hold.

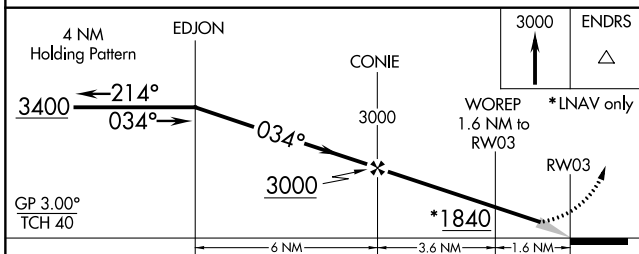
AWOS-3PT  
**119.725**

SPRINGFIELD APP CON  
**126.35**

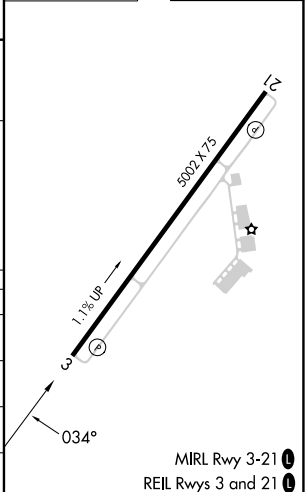
UNICOM  
**123.0 (CTAF)**



ELEV 1348 TDZE 1308



CATEGORY	A	B	C	D
LPV DA	1508-1	200 (200-1)		NA
LNAV/VNAV DA	1813-1¾	505 (500-1¾)		NA
LNAV MDA	1740-1	432 (400-1)		NA
CIRCLING	1900-1	552 (600-1)		NA



# RNAV (GPS) RWY 3

NC-3, 05 SEP 2024 to 03 OCT 2024

NC-3, 05 SEP 2024 to 03 OCT 2024

MIRL Rwy 3-21  
REIL Rwy 3 and 21