

DIEZL ONE DEPARTURE

HOLLOMAN AFB (KHMN)

AL-7 [USAF]

ALAMOGORDO, NEW MEXICO

ATIS ★ 273.5
 CLNC DEL
 126.7 289.4
 GND CON
 127.05 275.8
 TOWER ★
 119.3 254.4
 DEP CON
 128.1 284.0
 ALBUQUERQUE CENTER
 132.65 257.6

RADAR required

| Rwy | Knots | 60 | 120 | 180 | 240 | 300 | 360 |
|--------|----------|-----|-----|------|------|------|------|
| 04 (A) | V/V(fpm) | 350 | 700 | 1050 | 1400 | 1750 | 2100 |
| 16 (B) | V/V(fpm) | 492 | 984 | 1476 | 1968 | 2460 | 2952 |
| 34 (C) | V/V(fpm) | 350 | 700 | 1050 | 1400 | 1750 | 2100 |

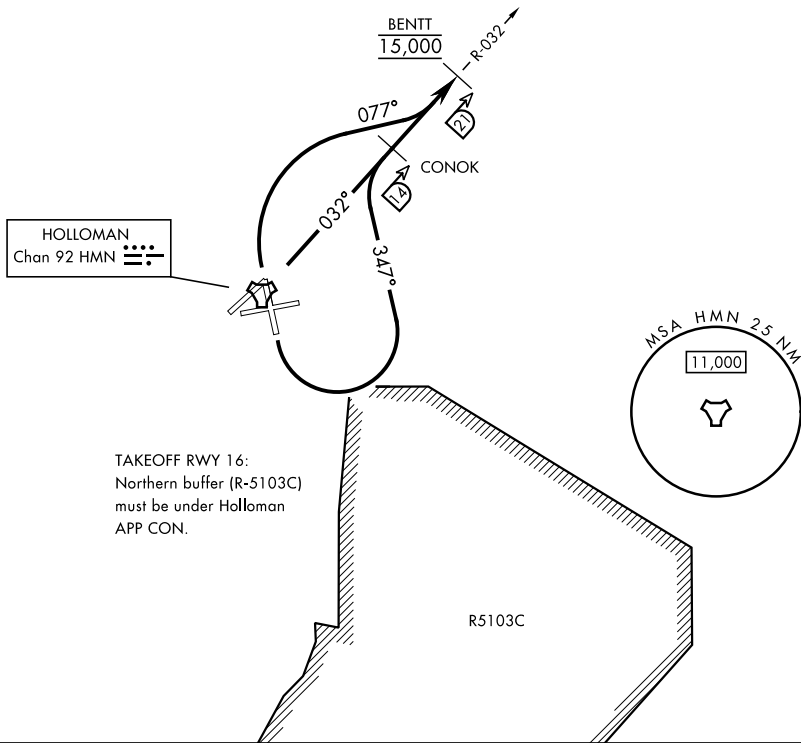
Minimum Climb Rate

11,929

(A) to 9300

(B) to 11,700

MILITARY USE ONLY



SW-1, 03 OCT 2024 to 31 OCT 2024

SW-1, 03 OCT 2024 to 31 OCT 2024



DEPARTURE ROUTE DESCRIPTION

TAKEOFF RWY 4: Climb direct BENTT, cross BENTT at 15,000.

TAKEOFF RWY 16: Climbing left turn to track 347°, intercept HMN R-032 direct CONOK, depart CONOK direct BENTT. Cross BENTT at 15,000.

TAKEOFF RWY 34: Climbing right turn on track 077°, intercept HMN R-032 direct BENTT, cross BENTT at 15,000.

DIEZL ONE DEPARTURE

Amdt 1 10AUG23

ALAMOGORDO, NEW MEXICO

HOLLOMAN AFB (KHMN)