

ALAMOGORDO, NEW MEXICO

# HI-ILS or LOC RWY 22

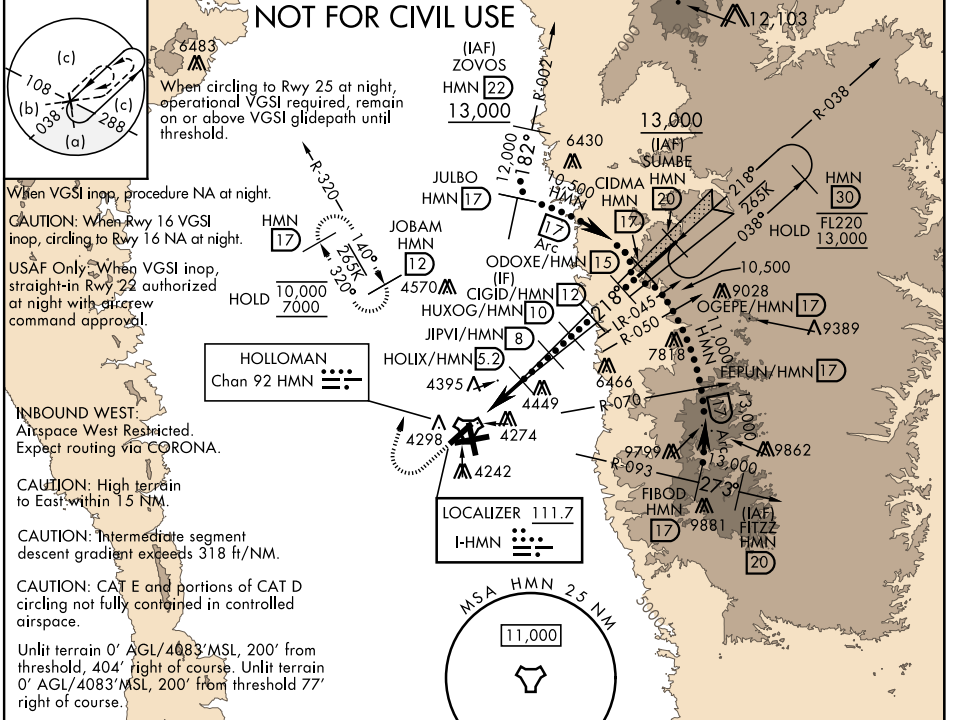
LOC I-HMN <b>111.7</b>	APCH CRS <b>218°</b>	Rwy ldg <b>10,578</b> TDZE <b>4083</b> Arprt Elev <b>4093</b>
---------------------------	-------------------------	--

AL-7 [USAF]

HOLLOMAN AFB (KHMM)

RADAR or DME required. *When ALS inop, increase vis to 3/4 miles. **When ALS inop, increase vis to 1 1/4 miles.		ALSF-1 	MISSED APPROACH: Climb straight ahead to 7000, passing 5000 turn right and intercept HMN R-320 tower to JOBAM and hold.
---	--	------------	---

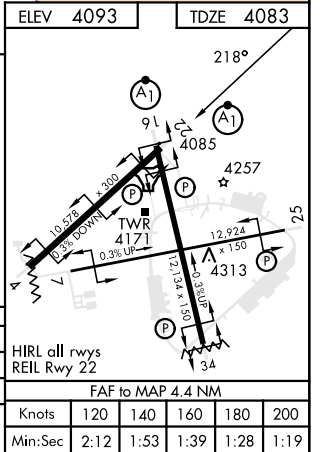
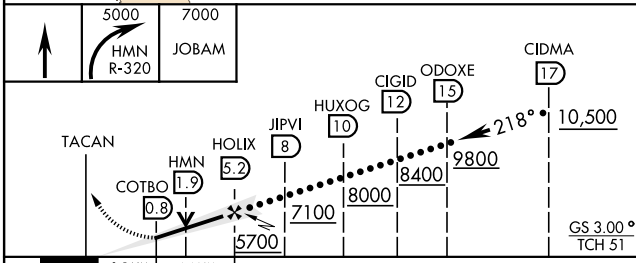
ATIS ★ <b>273.5</b>	ALBUQUERQUE CENTER <b>132.65 257.6</b>	APP CON <b>120.6 269.225</b>	TOWER ★ <b>119.3 254.4</b>	GND CON <b>127.05 275.8</b>	CLNC DEL <b>126.7 289.4</b>
------------------------	---	---------------------------------	-------------------------------	--------------------------------	--------------------------------



SW-1, 03 OCT 2024 to 31 OCT 2024

SW-1, 03 OCT 2024 to 31 OCT 2024

EMERG SAFE ALT 100 NM 14,200



ALAMOGORDO, NEW MEXICO

32°52'N - 106°06'W

HOLLOMAN AFB (KHMM)

Amtd 2 10AUG23

# HI-ILS or LOC RWY 22