

ALBANY, GEORGIA

AL-8 (FAA)

23334

WAAS CH <b>53613</b> <b>W23A</b>	APP CRS <b>227°</b>	Rwy Idg <b>6601</b> TDZE <b>192</b> Apt Elev <b>196</b>
--	------------------------	---

# RNAV (GPS) RWY 23

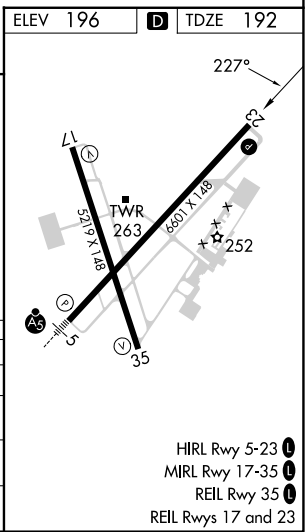
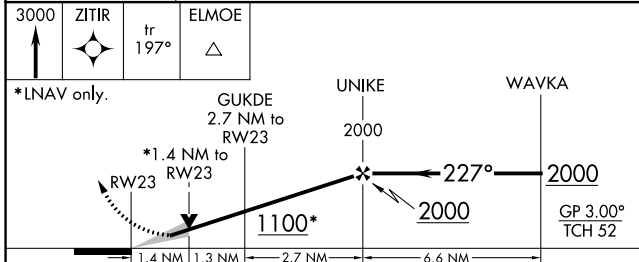
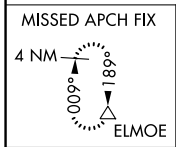
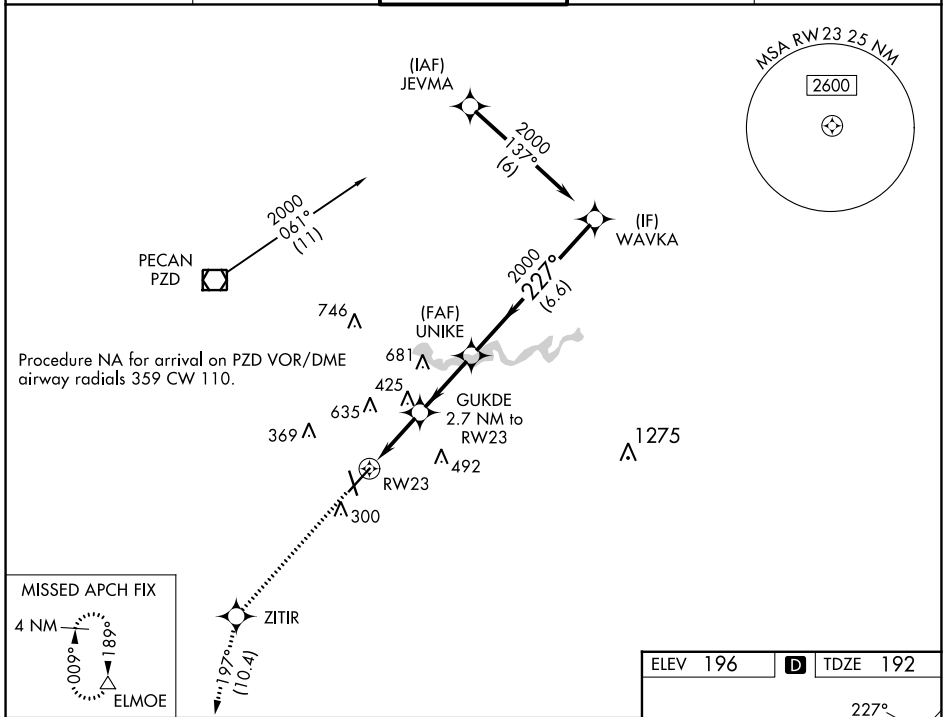
SOUTHWEST GEORGIA RGNL (ABY)

RNP APCH.

**▼** For uncompensated Baro-VNAV systems, LNAV/VNAV NA  
**▲** below -7°C or above 54°C.

MISSED APPROACH: Climb to 3000 direct ZITIR and on track 197° to ELMOE and hold.

ATIS <b>133.05</b>	JACKSONVILLE CENTER <b>125.75 363.075</b>	ALBANY TOWER * <b>120.25 (CTAF) 0336.4</b>	GND CON <b>121.9 348.6</b>	UNICOM <b>122.95</b>
-----------------------	--	---	-------------------------------	-------------------------



CATEGORY	A	B	C	D
LPV DA		531-1¼	339 (400-1¼)	
LNAV/VNAV DA		611-1½	419 (500-1½)	
LNAV MDA	680-1	488 (500-1)	680-1¼ 488 (500-1¼)	680-1½ 488 (500-1½)
CIRCLING	680-1	484 (500-1)	940-2¼ 744 (800-2¼)	940-2½ 744 (800-2½)

ALBANY, GEORGIA  
Amdt 1C 26MAR20

31°32'N-84°12'W

SOUTHWEST GEORGIA RGNL (ABY)  
RNAV (GPS) RWY 23

SE-4, 03 OCT 2024 to 31 OCT 2024

SE-4, 03 OCT 2024 to 31 OCT 2024