

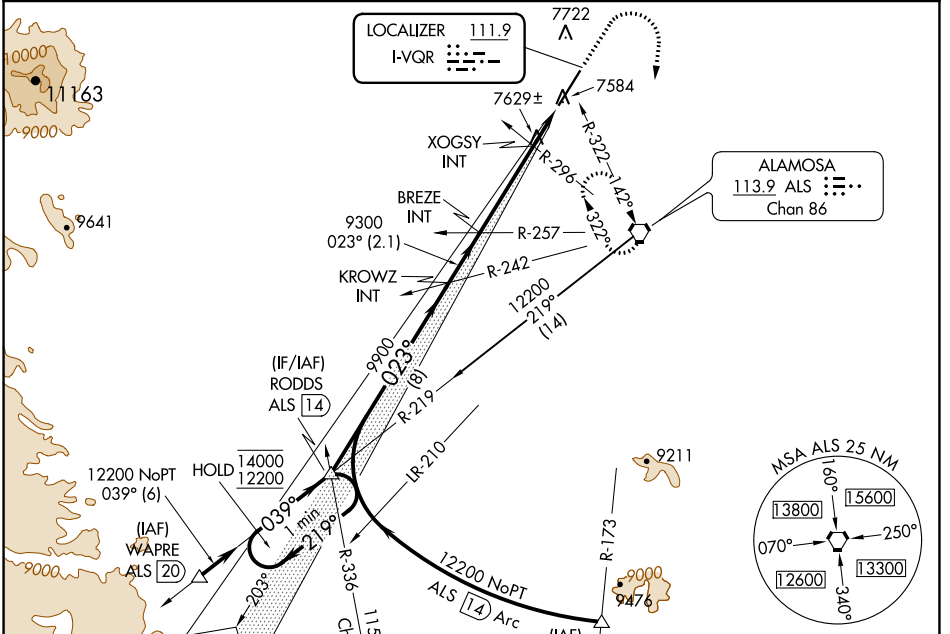
LOC I-VQR <b>111.9</b>	APP CRS <b>023°</b>	Rwy ldg <b>8519</b>
		TDZE <b>7540</b>
		Apt Elev <b>7540</b>

# ILS or LOC RWY 2

SAN LUIS VALLEY RGNL/BERGMAN FLD (ALS)

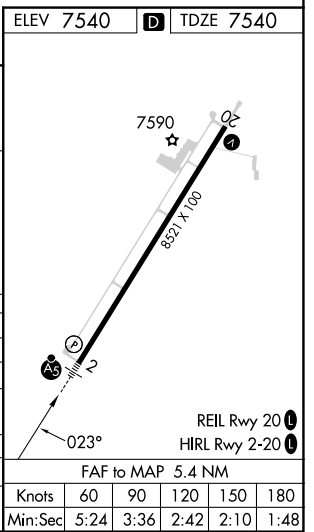
NA -26°C	For inop ALS, increase S-LOC 2 Cats C/D visibility to 1 3/8 SM.	MALSR ALS	MISSED APPROACH: Climb to 8700 then climbing right turn to 11000 direct ALS VORTAC and hold, continue climb in hold to 11000.
-------------	---	--------------	---

ASOS <b>135.175</b>	DENVER CENTER <b>128.375 379.95</b>	UNICOM <b>122.8 (CTAF)</b>
------------------------	--	-------------------------------



ELEV 7540 TDZE 7540

One Minute Holding Pattern	RODDS ALS 14	KROWZ INT	BREZE INT	XOGSY INT
	14000 ← 219°	9300	9300	8040
GS 3.00° TCH 48	12200 039°	9900	8040	
	8 NM	2.1 NM	3.6 NM	1.7 NM
CATEGORY	A	B	C	D
S-ILS 2	7740-1/2 200 (200-1/2)			
S-LOC 2	8040-1/2 500 (500-1/2)	8040-1 500 (500-1)		
CIRCLING	8040-1 500 (500-1)	8080-1 1/2 540 (600-1 1/2)	8100-2 560 (600-2)	
XOGSY FIX MINIMUMS (DUAL VOR RECEIVERS REQUIRED)				
S-LOC 2	7880-1/2 340 (400-1/2)	8080-1 1/2 540 (600-1 1/2)		
CIRCLING	8040-1 500 (500-1)	8080-1 1/2 540 (600-1 1/2)	8100-2 560 (600-2)	



SW-1, 03 OCT 2024 to 31 OCT 2024

SW-1, 03 OCT 2024 to 31 OCT 2024