

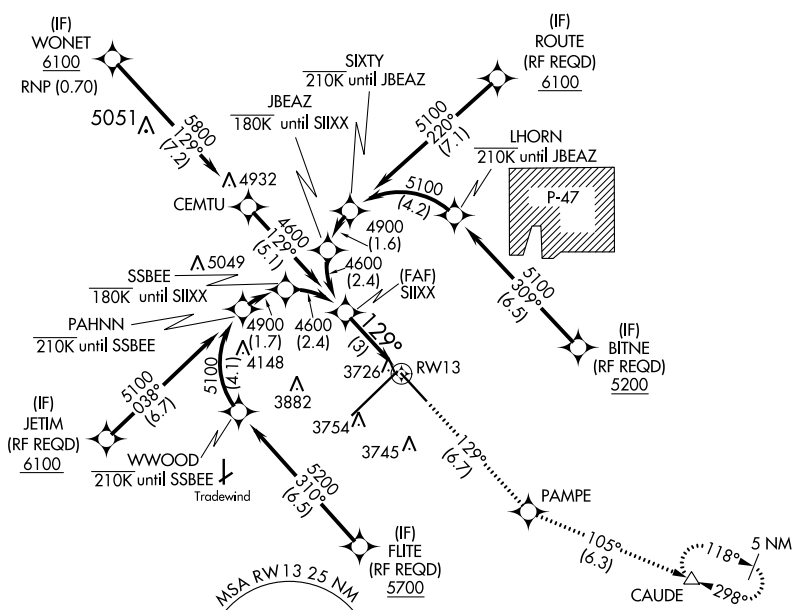
APP CRS	Rwy Idg	<b>7901</b>
<b>129°</b>	TDZE	<b>3603</b>
	Apt Elev	<b>3607</b>

# RNAV (RNP) Z RWY 13

RICK HUSBAND AMARILLO INTL (AMA)

<p><b>ASR</b> For uncompensated Baro-VNAV systems, procedure NA below -14°C (7°F) or above 51°C (124°F). GPS required.</p>	<p><b>MISSED APPROACH:</b> Climb to 5400 on track 129° to PAMPE and track 105° to CAUDE and hold.</p>
--	---

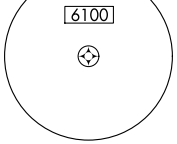
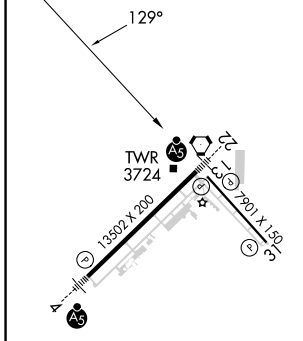
<p>ATIS <b>118.85 350.3</b></p>	<p>AMARILLO APP CON* <b>119.5 307.0</b></p>	<p>AMARILLO TOWER* <b>118.3(CTAF) 257.9</b></p>	<p>GND CON <b>121.9 348.6</b></p>	<p>CLNC DEL <b>121.65 239.275</b></p>	<p>UNICOM <b>122.95</b></p>
-------------------------------------	---	---	---------------------------------------	---	---------------------------------



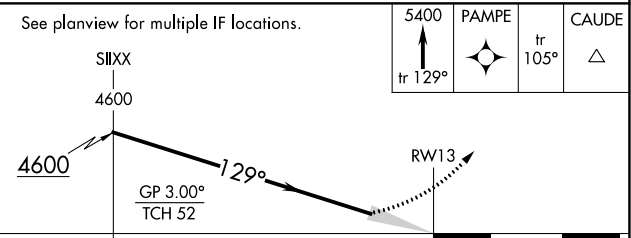
SC-2, 03 OCT 2024 to 31 OCT 2024

SC-2, 03 OCT 2024 to 31 OCT 2024

ELEV	<b>3607</b>	<b>D</b>	TDZE	<b>3603</b>
------	-------------	----------	------	-------------



## RNAV 1 - GPS or RADAR REQUIRED



CATEGORY	A	B	C	D
RNP 0.30 DA		3976-1¼	373 (400-1¼)	

## AUTHORIZATION REQUIRED