

HI-VOR or TACAN RWY 28R

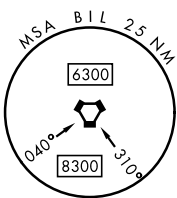
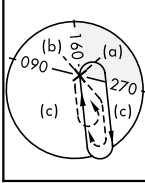
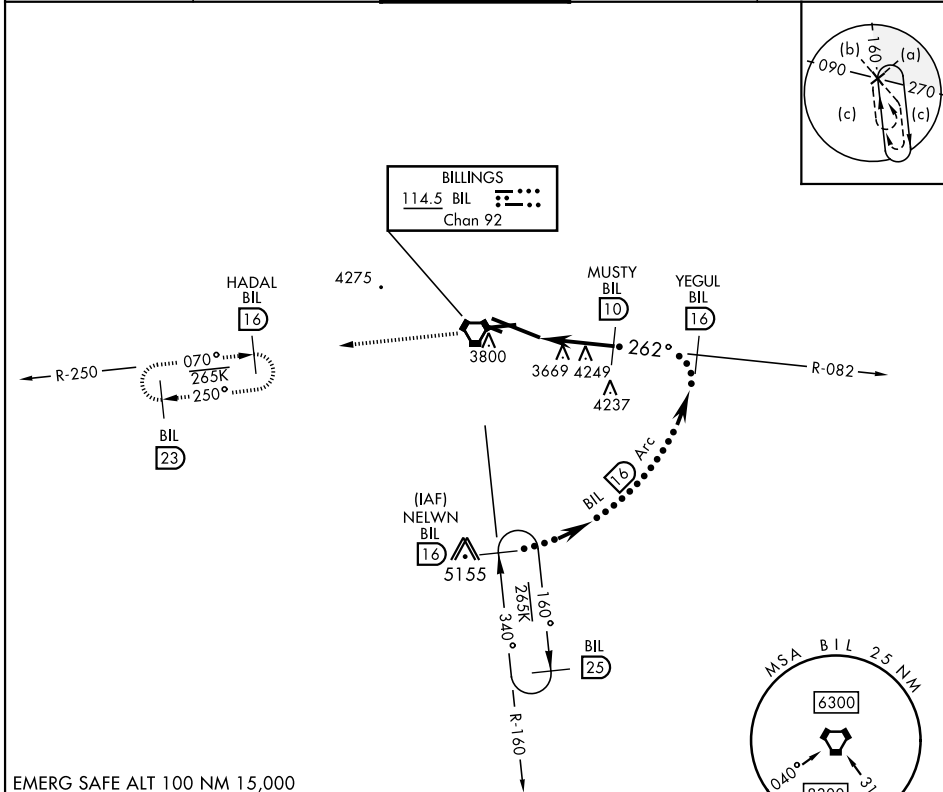
VORTAC BIL 114.5 Chan 92	APCH CRS 262°	Rwy Idg 10,518 TDZE 3517 Arprt Elev 3662	AL-48 [USAF]	BILLINGS LOGAN INTL (KBIL)
--	-------------------------	--	--------------	----------------------------

DME required.

▼

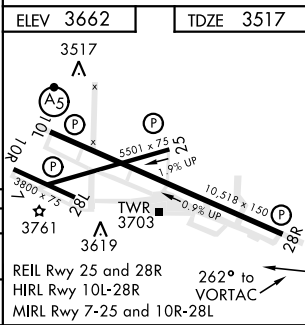
MISSED APPROACH: Climb to 9000 on BIL VORTAC R-082 to BIL VORTAC, and on BIL VORTAC R-250 to HADAL/16 DME and hold, continue Climb-in-Hold to 9000.

ATIS 126.3	BILLINGS APP CON 120.5 284.6	BILLINGS TOWER 127.2 257.8	GND CON 121.9	CLNC DEL 121.9
----------------------	--	--------------------------------------	-------------------------	--------------------------



EMERG SAFE ALT 100 NM 15,000

9000	BIL	HADAL BIL	NELWN R-160
↑	⬆	⬆	⬆
VORTAC	LATDI (4.6)	WYLED (5.8)	MUSTY (10)
←	←	←	←
2.3 NM	3.1 NM	2.88° TCH 56	6400
CATEGORY	C	D	E
S-28R	3940-1½	423 (300-1½)	FL200
CIRCLING	4180-1½ 518 (600-1½)	4580-3	918 (1000-3)



HI-VOR or TACAN RWY 28R

NW-1, 03 OCT 2024 to 31 OCT 2024

NW-1, 03 OCT 2024 to 31 OCT 2024