

APP CRS	Rwy Idg	<b>10518</b>
<b>282°</b>	TDZE	<b>3517</b>
	Apt Elev	<b>3662</b>

# RNAV (RNP) Z RWY 28R

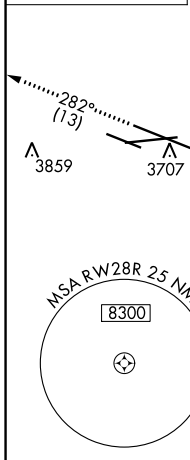
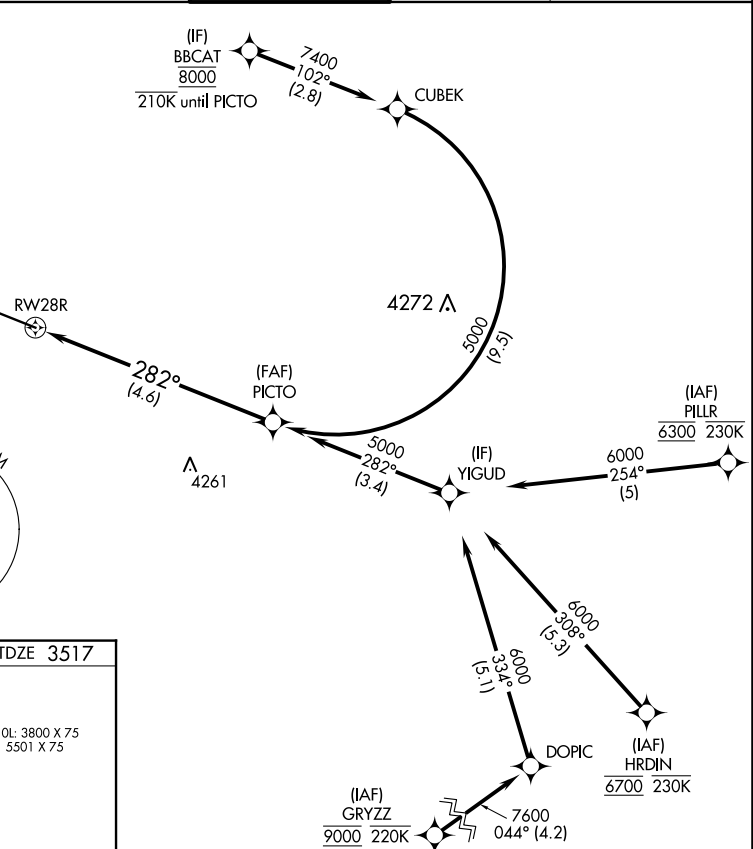
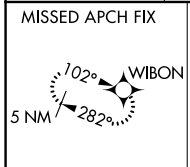
BILLINGS LOGAN INTL (BIL)

RNP AR APCH-GPS

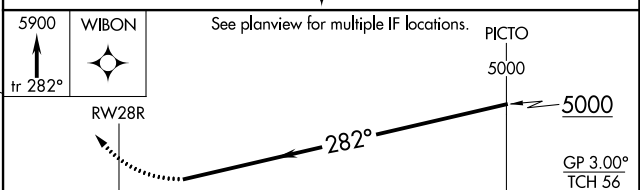
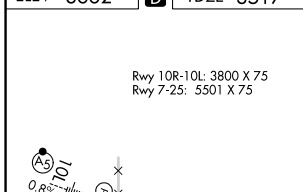
▼ For uncompensated Baro-VNAV systems, procedure NA below -24°C or above 50°C.

MISSED APPROACH: Climb to 5900 on track 282° to WIBON and hold.

ATIS <b>126.3</b>	BILLINGS APP CON <b>120.5 284.6</b>	BILLINGS TOWER <b>127.2 257.8</b>	GND CON <b>121.9</b>	CLNC DEL <b>121.9</b>
----------------------	--	--------------------------------------	-------------------------	--------------------------



ELEV 3662 **D** TDZE 3517



CATEGORY	A	B	C	D
RNP 0.30 DA	3903-1¼		386 (300-1¼)	

REIL Rwy 25 and 28R  
HIRL Rwy 10L-28R  
MIRL Rwy 7-25 and 10R-28L

## AUTHORIZATION REQUIRED

NW-1, 03 OCT 2024 to 31 OCT 2024

NW-1, 03 OCT 2024 to 31 OCT 2024