

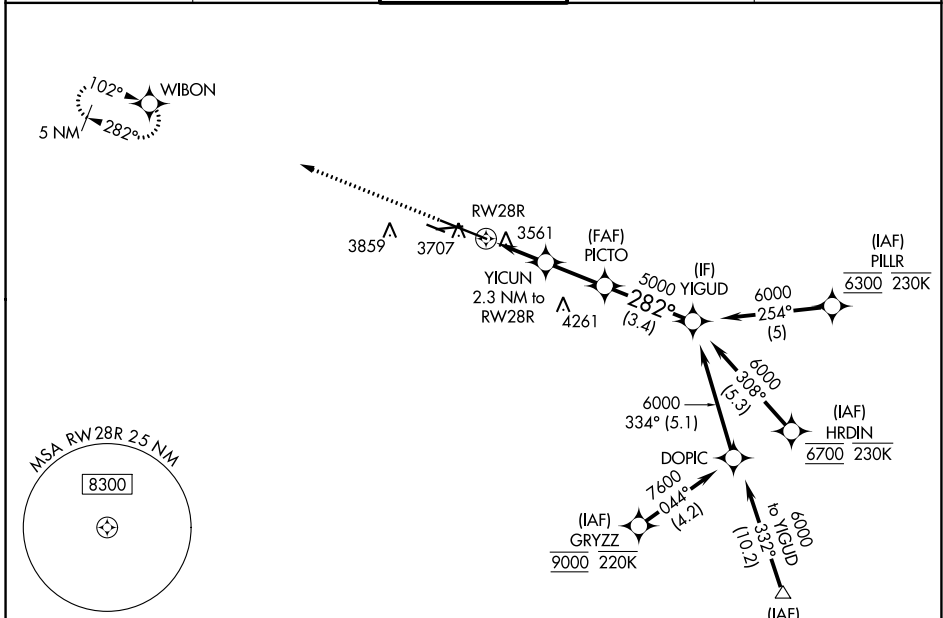
WAAS CH 56222 W28A	APP CRS 282°	Rwy Idg 10518 TDZE 3517 Apt Elev 3662
---------------------------------	------------------------	--

RNAV (GPS) Y RWY 28R

BILLINGS LOGAN INTL (BIL)

RNP APCH - GPS.		MISSED APPROACH: Climb to 5900 direct WIBON and hold.		
-----------------	--	---	--	--

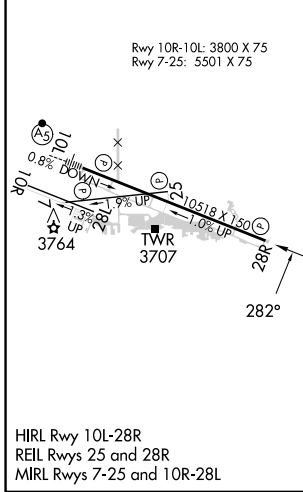
ATIS 126.3	BILLINGS APP CON 120.5 284.6	BILLINGS TOWER 127.2 257.8	GND CON 121.9	CLNC DEL 121.9
----------------------	--	--------------------------------------	-------------------------	--------------------------



NW-1, 03 OCT 2024 to 31 OCT 2024

NW-1, 03 OCT 2024 to 31 OCT 2024

ELEV 3662	D	TDZE 3517
-----------	----------	-----------



5155				
5900 WIBON				
YICUN 2.3 NM to RWY 28R				
PICTO 5000				
YIGUD 6000				
GP 3.00° TCH 56				
0.9 NM 1.4 NM 2.3 NM 3.4 NM				
CATEGORY	A	B	C	D
LPV DA		3767- ³ / ₄	250 (200- ³ / ₄)	
LNAV/VNAV DA		3786- ⁷ / ₈	269 (200- ⁷ / ₈)	
LNAV MDA	3820-1 303 (200-1)			
C CIRCLING	4160-1	498 (500-1)	4180-1 ¹ / ₂ 518 (600-1 ¹ / ₂)	4580-3 918 (1000-3)