

LOC/DME I-PVY 111.55	APP CRS 238°	Rwy Idg 24R 24L 9000 9956 TDZE 780 786 Apt Elev 799 799
Chan 52 (Y)		

ILS or LOC RWY 24R

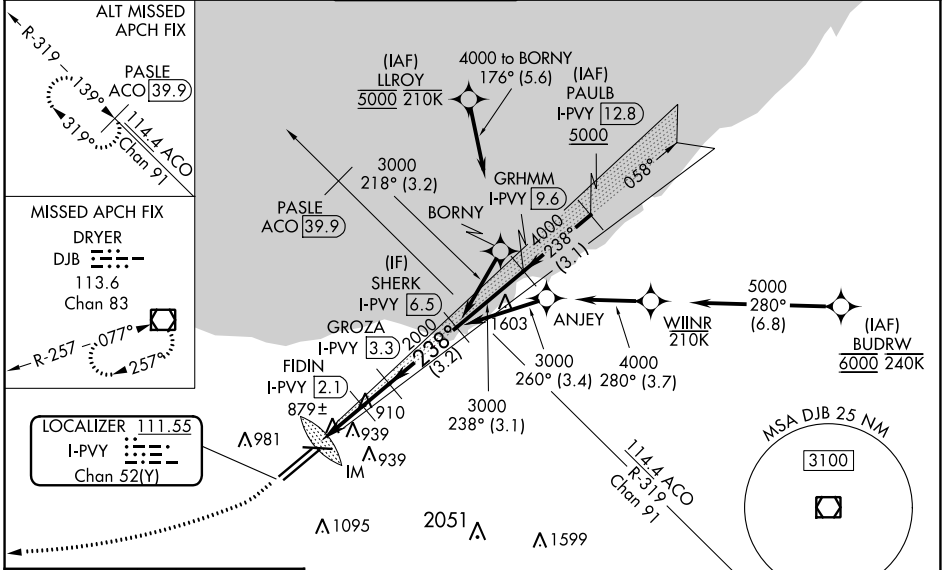
CLEVELAND-HOPKINS INTL (CLE)

DME required. Aircraft not DME/DME/IRU or GPS equipped - RADAR required for procedure entry. RNAV 1. From LLROY and BUDRW: RNAV 1-DME/DME/IRU or GPS required for procedure entry.

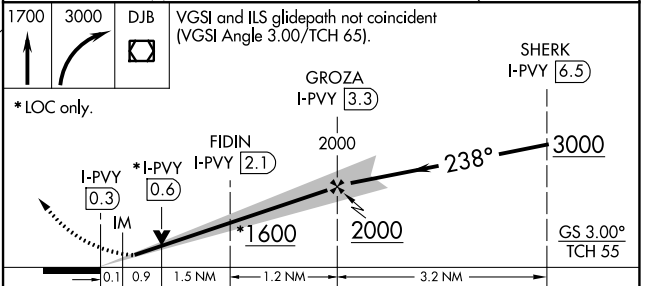
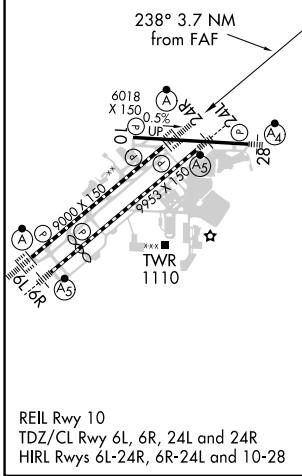
⚠ Circling Rwy 10 NA at night. Simultaneous approach authorized. Simultaneous operations require use of vertical guidance; maintain last assigned altitude until established on glide slope. Inop table does not apply to sidestep 24L. For inop ALS, increase S-LOC 24R Cats C/D visibility to RVR 5500.

Rwy 24L MALSR	Rwy 24R ALSF-2	MISSED APPROACH: Climb to 1700 then climbing right turn to 3000 direct DJB VOR/DME and hold.
------------------	-------------------	--

D-ATIS ARR 127.85 DEP 132.375	CLEVELAND APP CON 126.55 346.325	CLEVELAND TOWER 124.5 273.45	GND CON 121.7 273.45	CLNC DEL 125.05 273.45	CPDLC
---	--	--	--------------------------------	----------------------------------	-------



ELEV 799	D TDZE 24R 780 TDZE 24L 786
----------	---------------------------------------



CATEGORY	A	B	C	D
S-ILS 24R	980/18 200 (200-½)			
S-LOC 24R	1160/24	379 (400-½)	1160/35	379 (400-¾)
SIDESTEP 24L	1280/55	494 (500-1)	1280-1½ 494 (500-1½)	1280-2 494 (500-2)
C CIRCLING	1420-1	621 (700-1)	1420-1¾ 621 (700-1¾)	1420-2 621 (700-2)