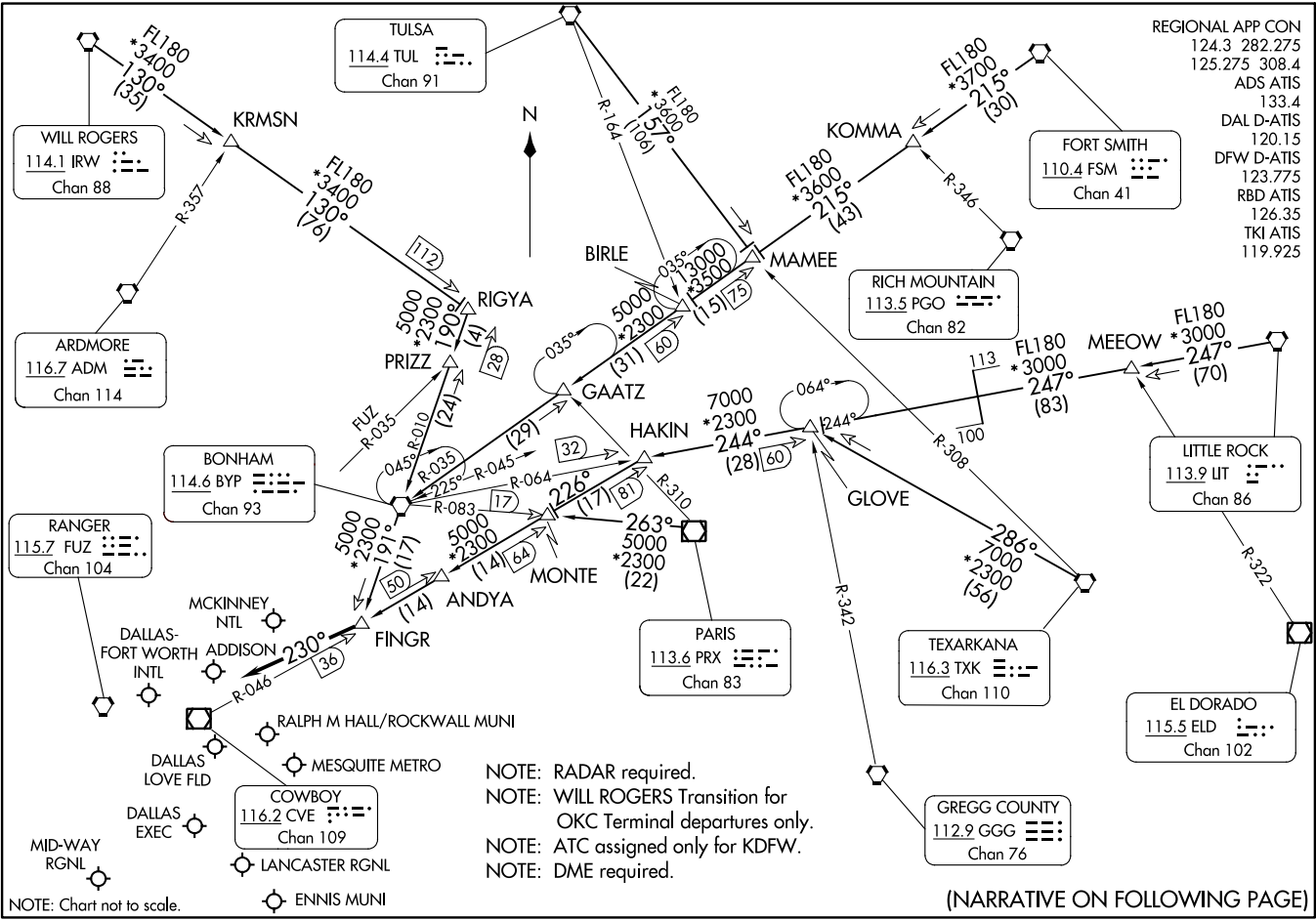


FINGR NINE ARRIVAL  
(FINGR, FINGR9) 20APR23

FINGR NINE ARRIVAL  
(FINGR, FINGR9) 23334

AL-106 (FAA)

REGIONAL APP CON  
 124.3 282.275  
 125.275 308.4  
 ADS ATIS 133.4  
 DAL D-ATIS 120.15  
 DFW D-ATIS 123.775  
 RBD ATIS 126.35  
 TKI ATIS 119.925



NOTE: RADAR required.  
 NOTE: WILL ROGERS Transition for OKC Terminal departures only.  
 NOTE: ATC assigned only for KDFW.  
 NOTE: DME required.

(NARRATIVE ON FOLLOWING PAGE)

DALLAS-FORT WORTH, TEXAS

DALLAS-FORT WORTH, TEXAS

NOTE: Chart not to scale.

ARRIVAL ROUTE DESCRIPTION

BONHAM TRANSITION (BYP.FINGR9): From over BYP VORTAC on BYP R-191 to FINGR. Thence . . . .

FORT SMITH TRANSITION (FSM.FINGR9): From over FSM VORTAC on FSM R-215 to MAMEE, then on BYP R-035 to BYP VORTAC, then on BYP R-191 to FINGR. Thence . . . .

LITTLE ROCK TRANSITION (LIT.FINGR9): From over LIT VORTAC on LIT R-247 to MEEOW, then on LIT R-247 and BYP R-064 to GLOVE, then on BYP R-064 to HAKIN, then on CVE R-046 to FINGR. Thence . . . .

PARIS TRANSITION (PRX.FINGR9): From over PRX VOR/DME on PRX R-263 to MONTE, then on CVE R-046 to FINGR. Thence . . . .

RIGYA TRANSITION (RIGYA.FINGR9): From over RIGYA on BYP R-010 to BYP VORTAC, then on BYP R-191 to FINGR. Thence . . . .

TEXARKANA TRANSITION (TXK.FINGR9): From over TXK VORTAC on TXK R-286 to GLOVE, then on BYP R-064 to HAKIN, then on CVE R-046 to FINGR. Thence . . . .

TULSA TRANSITION (TUL.FINGR9): From over TUL VORTAC on TUL R-157 to MAMEE, then on BYP R-035 to BYP VORTAC, then on BYP R-191 to FINGR. Thence . . . .

WILL ROGERS TRANSITION (IRW.FINGR9): From over IRW VORTAC on IRW R-130 to RIGYA, then on BYP R-010 to BYP VORTAC, then on BYP R-191 to FINGR. Thence . . . .

. . . . from FINGR, then on heading 230° or as assigned by ATC. Expect RADAR vectors to final approach course.

SC-2, 03 OCT 2024 to 31 OCT 2024

SC-2, 03 OCT 2024 to 31 OCT 2024