

WAAS CH <b>93704</b> <b>W32A</b>	APP CRS <b>318°</b>	Rwy Idg TDZE Apt Elev	<b>8496</b> <b>382</b> <b>401</b>
--	------------------------	-----------------------------	---

# RNAV (GPS) RWY 32

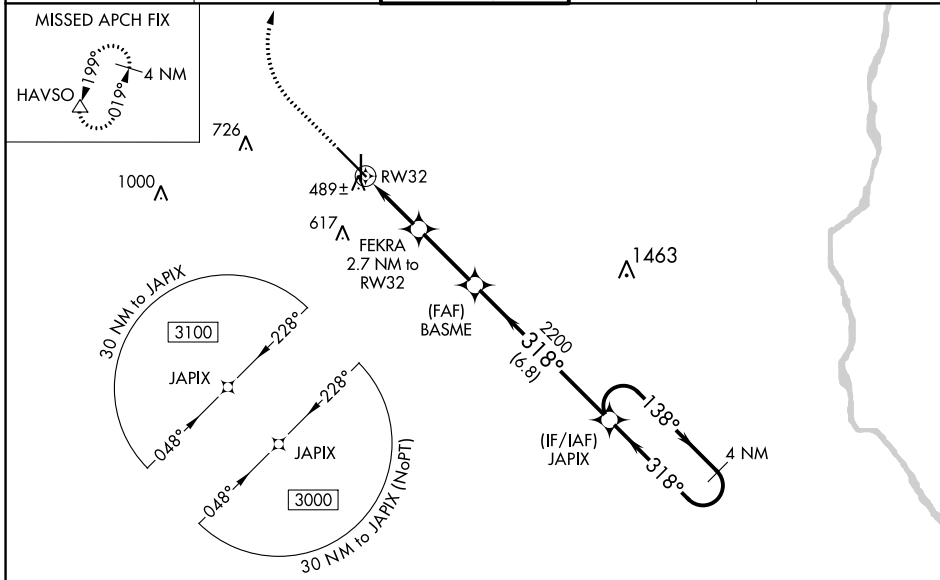
DOTHAN RGNL (DHN)

For uncompensated Baro-VNAV systems, LNAV/VNAV NA below -15°C (5°F) or above 41°C (105°F).  
DME/DME RNP-0.3 NA.  
\*\*RVR 1800 authorized with use of FD or AP or HUD to DA.

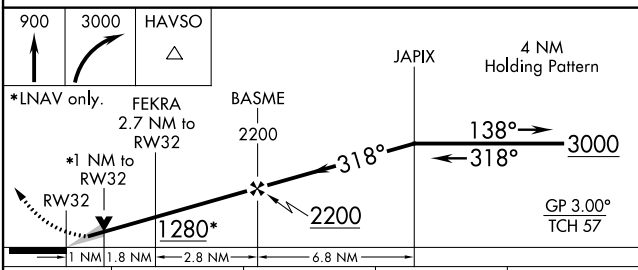
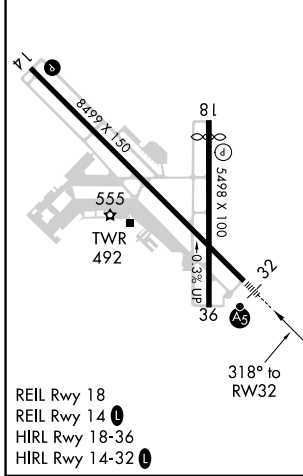
MALSRL  
A5

MISSED APPROACH: Climb to 900 then climbing right turn to 3000 direct HAVSO and hold.

ATIS <b>135.725</b>	CAIRNS APP CON * <b>125.4 327.125</b>	DOTHAN TOWER* <b>118.4 (CTAF) 0 257.6</b>	GND CON <b>121.7 348.6</b>	UNICOM <b>122.95</b>
------------------------	--	--	-------------------------------	-------------------------



ELEV 401	<b>D</b>	TDZE 382
----------	----------	----------



CATEGORY	A	B	C	D
LPV DA**	582/24 200 (200-½)			
LNAV/VNAV DA	670/24 288 (300-½)			
LNAV MDA	740/24 358 (400-½)	740/30 358 (400-¾)		
<b>C</b> CIRCLING	860-1 459 (500-1)	920-1½ 519 (600-1½)	1040-2 639 (700-2)	

SE-4, 03 OCT 2024 to 31 OCT 2024

SE-4, 03 OCT 2024 to 31 OCT 2024