

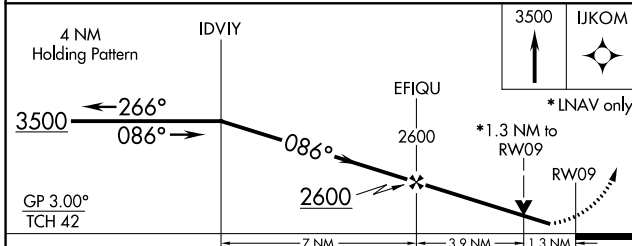
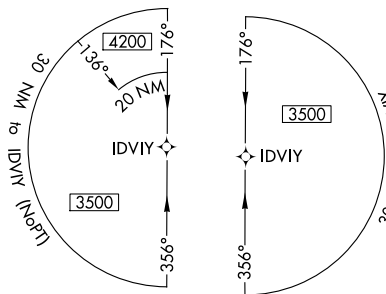
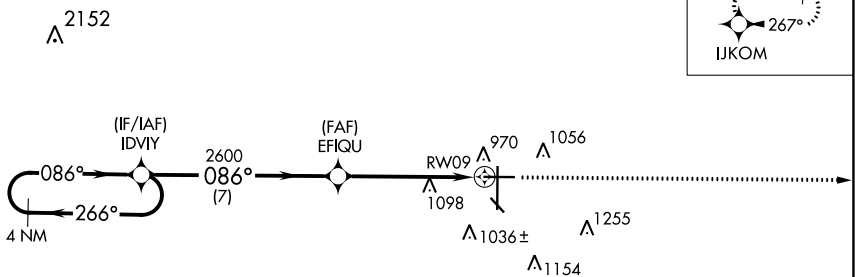
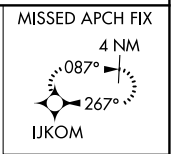
WAAS CH <b>97433</b> <b>W09A</b>	APP CRS <b>086°</b>	Rwy Idg TDZE Apt Elev	<b>6302</b> <b>900</b> <b>901</b>
--	------------------------	-----------------------------	---

# RNAV (GPS) RWY 9

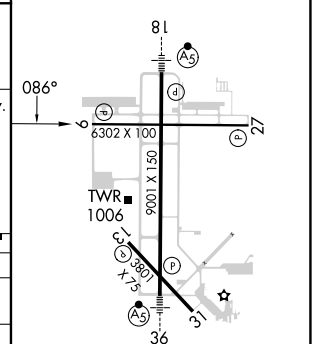
HECTOR INTL (F.A.R.)

RNP APCH.		MISSED APPROACH: Climb to 3500 direct IJKOM and hold.		
Baro-VNAV NA. Rwy 9 helicopter visibility reduction below 3/4 SM NA.				

ATIS <b>124.5 379.2</b>	FARGO APP CON <b>120.4 377.15</b>	FARGO TOWER <b>133.8 290.4</b>	GND CON <b>121.9 348.6</b>	CLNC DEL <b>121.9 348.6</b>
----------------------------	--------------------------------------	-----------------------------------	-------------------------------	--------------------------------



ELEV 901	<b>D</b>	TDZE 900
----------	----------	----------



CATEGORY	A	B	C	D
LPV DA		1150-3/4	250 (300-3/4)	
LNAV/VNAV DA		1171-7/8	271 (300-7/8)	
LNAV MDA	1360-1	460 (500-1)	1360-1 3/8	460 (500-1 3/8)
<b>C</b> CIRCLING	1380-1	479 (500-1)	1520-1 3/4	1620-2 1/4
			619 (700-1 3/4)	719 (800-2 1/4)

HIRL Rwy 18-36  
REIL Rwy 9 and 27  
MIRL Rwy 9-27 and 13-31

NC-1, 03 OCT 2024 to 31 OCT 2024

NC-1, 03 OCT 2024 to 31 OCT 2024