

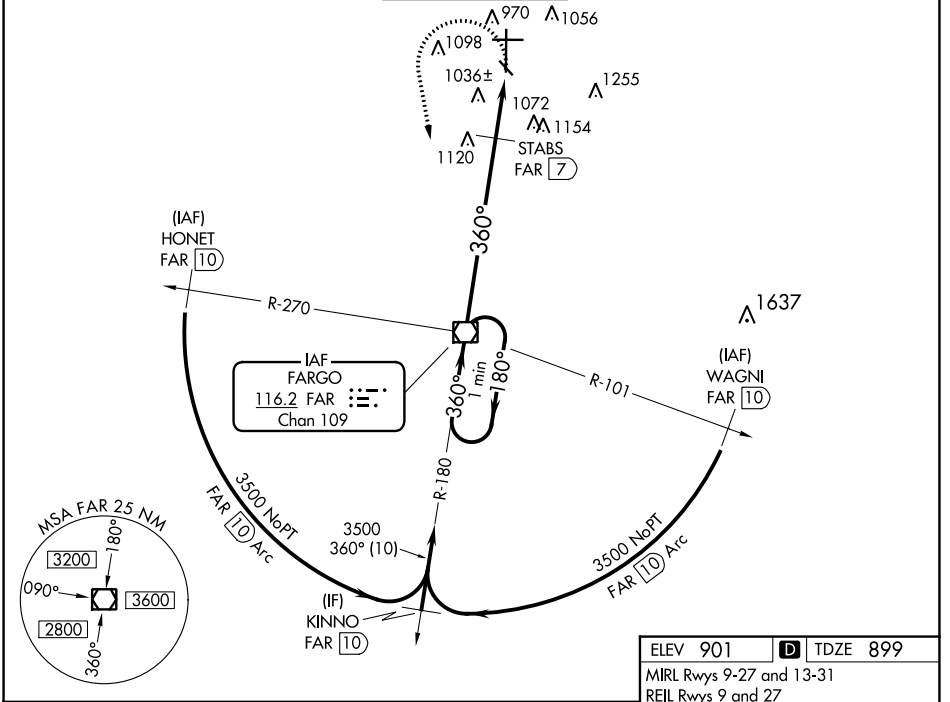
VOR/DME FAR 116.2 Chan 109	APP CRS 360°	Rwy Idg TDZE 899 Apt Elev 901
--	------------------------	---

VOR RWY 36

HECTOR INTL (FAR)

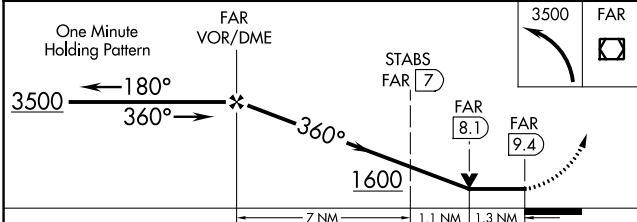
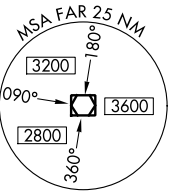
For inop MALS, increase S-36 Cat E visibility to 2½ miles. STABS Fix Minimums: For inop MALS, increase S-36 Cat E visibility to 1¾ mile.	MALS	MISSED APPROACH: Climbing left turn to 3500 direct FAR VOR/DME and hold.

ATIS 124.5 379.2	FARGO APP CON 120.4 377.15	FARGO TOWER 133.8 290.4	GND CON 121.9 348.6	CINC DEL 121.9 348.6
----------------------------	--------------------------------------	-----------------------------------	-------------------------------	--------------------------------



NC-1, 03 OCT 2024 to 31 OCT 2024

NC-1, 03 OCT 2024 to 31 OCT 2024



ELEV 901	TDZE 899
MRL Rwy 9-27 and 13-31	
REIL Rwy 9 and 27	
HIRL Rwy 18-36 81	

STABS FIX MINIMUMS				
S-36	1380/24	481 (500-½)	1380/40	481 (500-1)
CIRCLING	1380-1	479 (500-1)	1520-1¾	619 (700-1¾)
S-36	1380/40	481 (500-1)	1380/50	481 (500-1½)
CIRCLING	1380-1	479 (500-1)	1620-2¼	719 (800-2¼)
S-36	1600-2	701 (700-2)	1600-1½	701 (700-1½)
CIRCLING	1600-1	699 (700-1)	1600-2	699 (700-2)
S-36	1600-2	701 (700-2)	1600-1¾	701 (700-1¾)
CIRCLING	1600-1	699 (700-1)	1620-2¼	719 (800-2¼)
S-36	1600-2	701 (700-2)	1600-2	701 (700-2)
CIRCLING	1600-1	699 (700-1)	1620-2½	719 (800-2½)

FAR to MAP 9.4 NM					
Knots	60	90	120	150	180
Min:Sec	9:24	6:16	4:42	3:46	3:08