

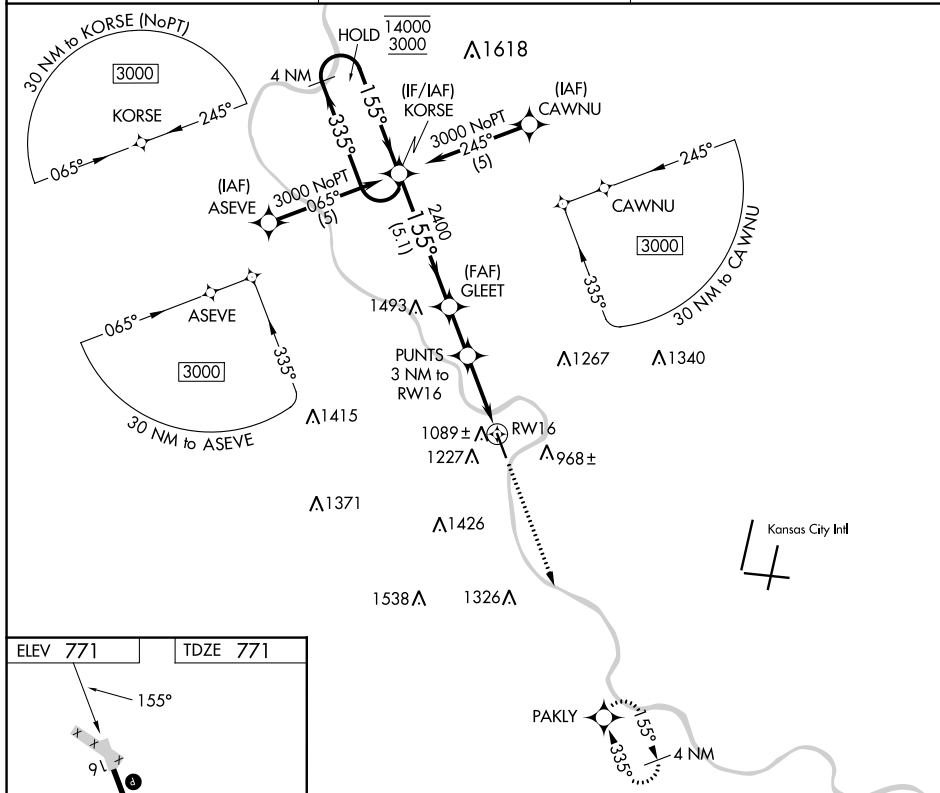
APP CRS	Rwy Idg	5318
155°	TDZE	771
	Apt Elev	771

RNAV (GPS) RWY 16

SHERMAN AAF (FLV)

RNP APCH - GPS.	MISSED APPROACH: Climb to 3100 direct PAKLY and hold.
<p>⚠ Circling NA west of Rwy 16-34. Procedure NA at night. Rwy 16 helicopter visibility reduction below 1 SM NA. Use Kansas City Intl altimeter setting.</p>	

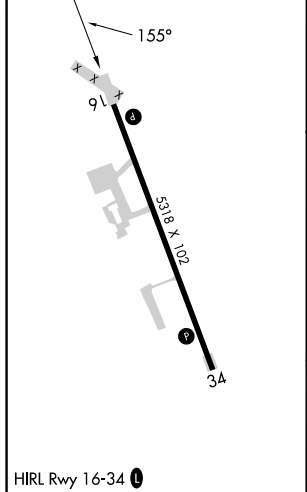
MCI ASOS 128.375	KANSAS CITY APP CON 124.7 284.7	CTAF 126.20
----------------------------	---	-----------------------



NC-2, 03 OCT 2024 to 31 OCT 2024

NC-2, 03 OCT 2024 to 31 OCT 2024

ELEV 771	TDZE 771
----------	----------



4 NM Holding Pattern	VGSI and descent angles not coincident (VGSI Angle 3.00/TCH 40).		3100	PAKLY
KORSE	GLEET	PUNTS 3 NM to RWY 16		
14000 3000	2400	1780		
	5.1 NM	1.9 NM	3 NM	
CATEGORY	A	B	C	D
LNAV MDA	1520-1 749 (800-1)	1520-1¼ 749 (800-1¼)	1520-2 749 (800-2)	NA
C CIRCLING	1520-1 749 (800-1)	1520-1¼ 749 (800-1¼)	1520-2¼ 749 (800-2¼)	NA