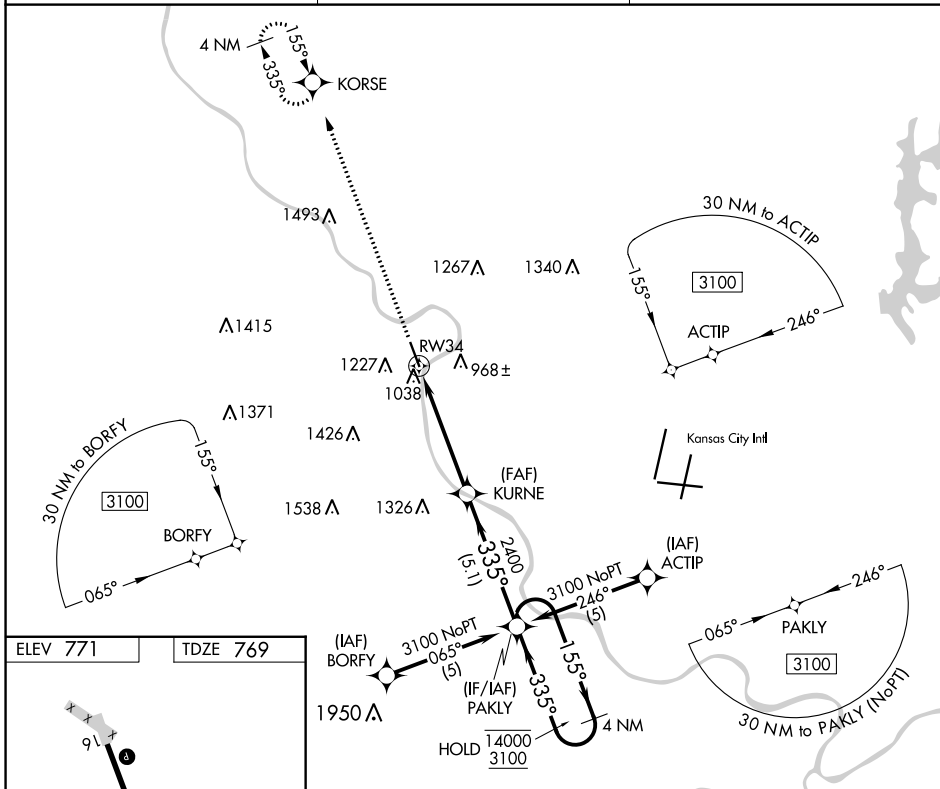


APP CRS	Rwy Idg	5318
335°	TDZE	769
	Apt Elev	771

RNAV (GPS) RWY 34

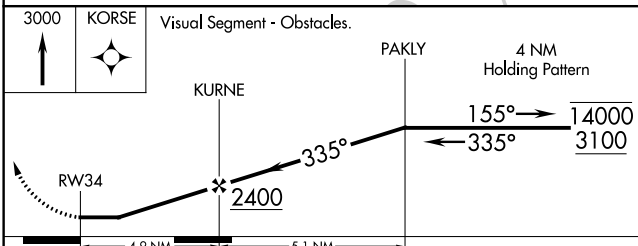
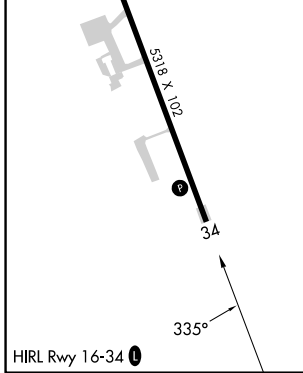
SHERMAN AAF (FLV)

RNP APCH - GPS.		MISSED APPROACH: Climb to 3000 direct KORSE and hold.
NA Circling NA west of Rwy 16-34. Procedure NA at night. Rwy 34 helicopter visibility reduction below 1 SM NA. Use Kansas City Intl altimeter setting.		
MCI ASOS 128.375	KANSAS CITY APP CON 124.7 284.7	CTAF 126.2



NC-2, 03 OCT 2024 to 31 OCT 2024

NC-2, 03 OCT 2024 to 31 OCT 2024



CATEGORY	A	B	C	D
LNAV MDA	1560-1 791 (800-1)	1560-1¼ 791 (800-1¼)	1560-2½ 791 (800-2½)	NA
C CIRCLING	1560-1 789 (800-1)	1560-1¼ 789 (800-1¼)	1560-2½ 789 (800-2½)	NA