

VORTAC MCI <b>113.25</b> Chan <b>79(Y)</b>	APP CRS <b>296°</b>	Rwy Idg TDZE Apt Elev <b>771</b>	N/A N/A <b>771</b>
--	------------------------	---	--------------------------

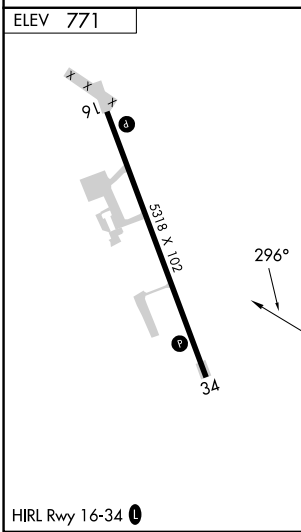
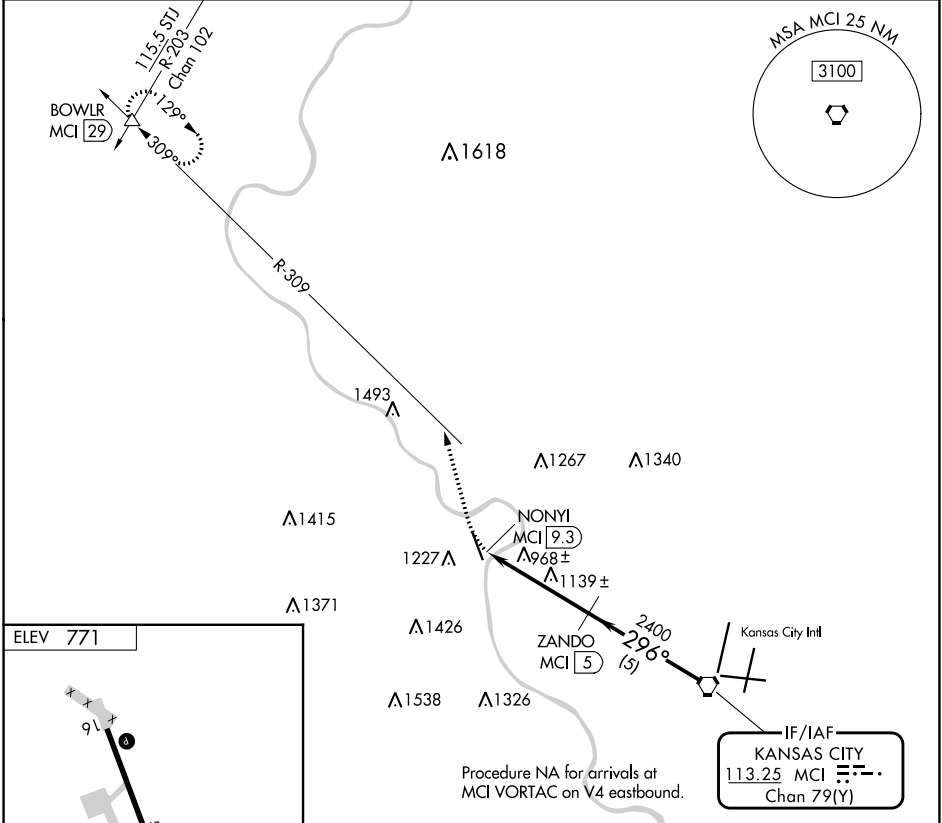
**VOR-A**  
SHERMAN AAF (FLV)

DME required.

Procedure NA at night. Circling NA west of Rwy 16-34.  
Use Kansas City Intl altimeter setting.

MISSED APPROACH: Climbing right turn to 3000 on heading 340° and MCI R-309 to BOWL and hold.

MCI ASOS <b>128.375</b>	KANSAS CITY APP CON <b>124.7 284.7</b>	CTAF <b>126.2</b>
----------------------------	---	----------------------



3000	MCI R-309	BOWL R	MCI VORTAC	
hdg 340°			ZANDO MCI 5	4000
NONYI MCI 9.3			2400	
	4.3 NM		5 NM	
CATEGORY	A	B	C	D
CIRCLING	1460-1	689 (700-1)	1500-2 729 (800-2)	1640-2¾ 869 (900-2¾)

NC-2, 03 OCT 2024 to 31 OCT 2024

NC-2, 03 OCT 2024 to 31 OCT 2024