

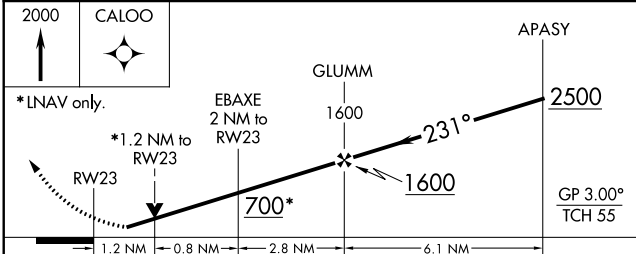
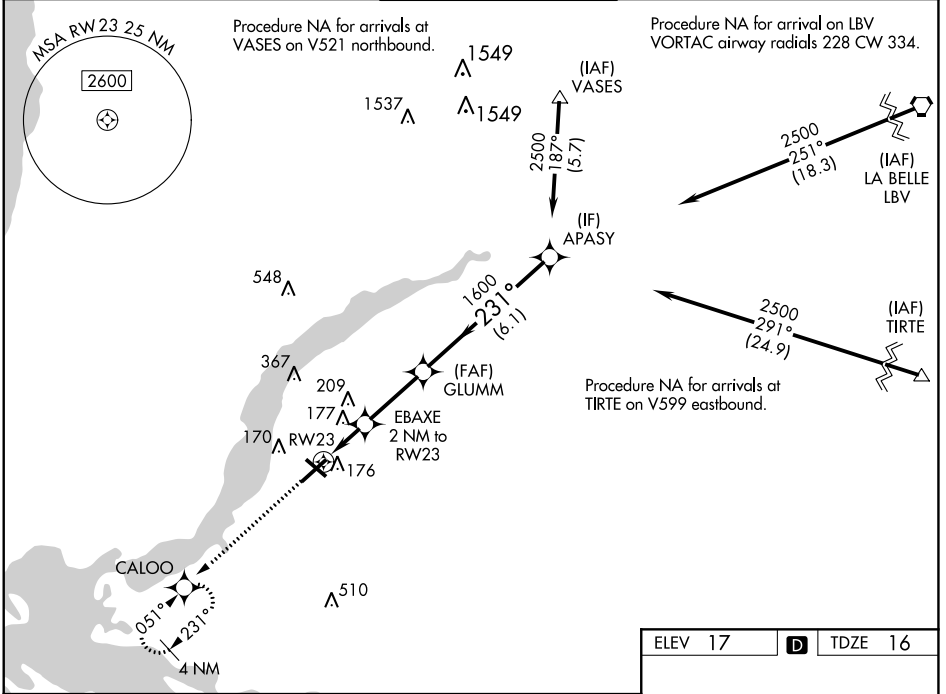
WAAS CH 69424 W23A	APP CRS 231°	Rwy Idg TDZE Apt Elev	5548 16 17
--	------------------------	-----------------------------	---------------------------------------

RNAV (GPS) RWY 23

PAGE FLD (FMY)

RNP APCH.	<p>When Circling to Rwy 31 at night, operational VGSI required, remain on or above VGSI glidepath until threshold. Rwy 23 helicopter visibility reduction below $\frac{3}{4}$ SM NA. For uncompensated Baro-VNAV systems, LNAV/VNAV NA below 4°C or above 54°C.</p>	MISSED APPROACH: Climb to 2000 direct CALOO and hold.
-----------	--	--

ATIS 123.725	FORT MYERS APP CON ★ 125.15 306.2 (Rwys 5, 13) 126.8 306.2 (Rwys 23, 31)	PAGE TOWER ★ 119.0 (CTAF) 306.95	GND CON 121.7	CLNC DEL 121.7
------------------------	--	---	-------------------------	--------------------------



ELEV 17	D	TDZE 16
---------	---	---------

TWR 100

231°

2310 X 150

2310 X 150

REIL Rwys 5, 13, 23 and 31
MIRL Rwy 5-23 and 13-31

CATEGORY	A	B	C	D
LPV DA	274- $\frac{3}{4}$		258 (300- $\frac{3}{4}$)	
LNAV/VNAV DA	377-1		361 (400-1)	
LNAV MDA	440-1 424 (500-1)		440-1 $\frac{1}{4}$ 424 (500-1 $\frac{1}{4}$)	
CIRCLING	540-1 523 (600-1)		600-1 $\frac{1}{2}$ 680-2 583 (600-1 $\frac{1}{2}$) 663 (700-2)	

SE-3, 03 OCT 2024 to 31 OCT 2024

SE-3, 03 OCT 2024 to 31 OCT 2024