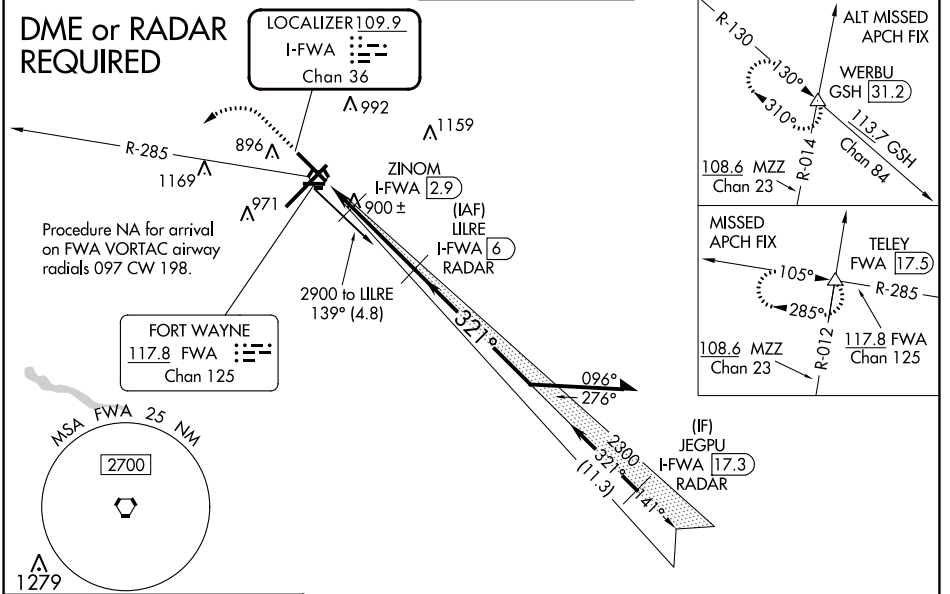


LOC/DME I-FWA 109.9 Chan 36	APP CRS 321°	Rwy Idg TDZE Apt Elev	8001 800 815
--	------------------------	-----------------------------	---

ILS or LOC RWY 32

FORT WAYNE INTL (FWA)

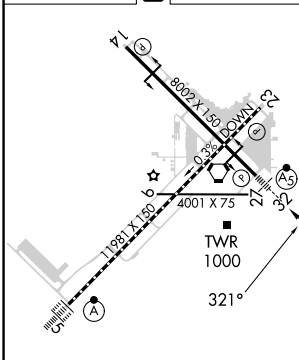
DME required for LOC only. DME or RADAR required for procedure entry.		MALSR	MISSED APPROACH: Climb to 3000 then left turn on FWA VORTAC R-285 to TELEY INT/FWA 17.5 DME and hold.	
<p>⚠ For inop ALS, increase S-ILS 32 Cat E visibility to RVR 4000, S-LOC 32 Cat E visibility to RVR 6000. Use I-FWA DME when on the localizer course. # RVR 1800 authorized with use of FD or AP or HUD to DA.</p>				
ATIS 121.25 360.825	FORT WAYNE APP CON 127.2 284.6	FORT WAYNE TOWER 119.1 269.325	GND CON 121.9 348.6	CLNC DEL 124.75



EC-2, 03 OCT 2024 to 31 OCT 2024

EC-2, 03 OCT 2024 to 31 OCT 2024

ELEV 815	D	TDZE 800
----------	----------	----------



TDZ/CL Rwy 5 REIL Rwys 14 and 23 HIRL Rwys 5-23 and 14-32					
FAF to MAP 4.6 NM					
Knots	60	90	120	150	180
Min:Sec	4:36	3:04	2:18	1:50	1:32

CATEGORY	A	B	C	D	E
S-ILS 32	# 1000/24 200 (200-½)				
S-LOC 32	1160/24	360 (400-½)	1160/40 360 (400-¾)		
C CIRCLING	1300-1	485 (500-1)	1420-1¾ 605 (700-1¾)	1520-2¼ 705 (800-2¼)	1520-2½ 705 (800-2½)