

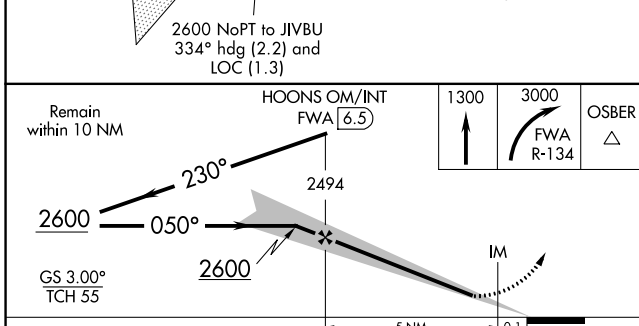
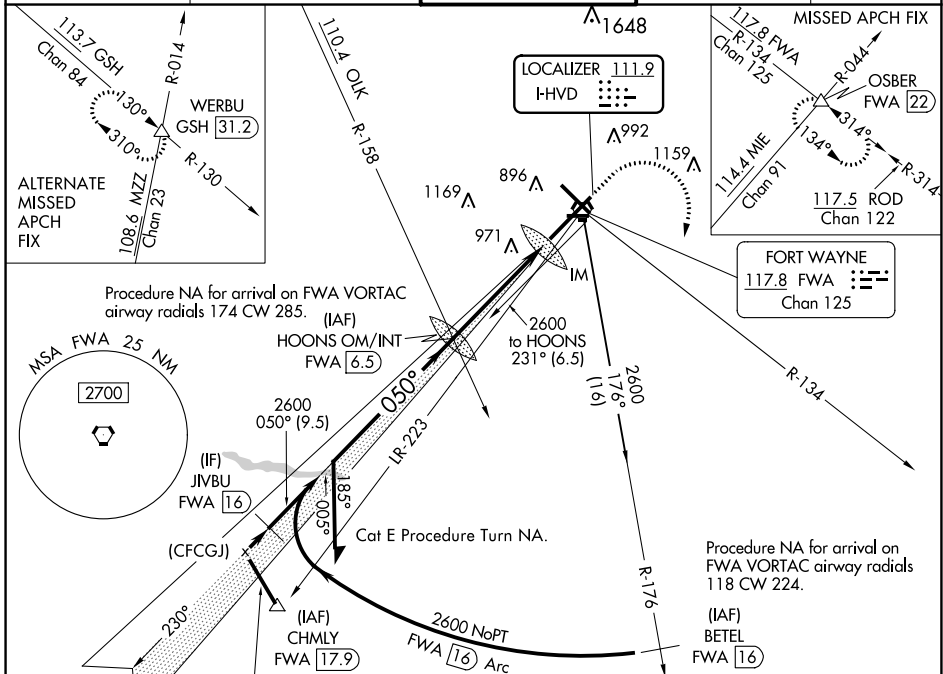
LOC I-HVD <b>111.9</b>	APP CRS <b>050°</b>	Rwy Idg <b>11981</b>
		TDZE <b>815</b>
		Apt Elev <b>815</b>

# ILS or LOC RWY 5

FORT WAYNE INTL (FWA)

<p><b>▼</b> For inop ALS, increase S-ILS 5 Cat E visibility to RVR 4000 and S-LOC 5 Cat C/D/E visibility to 1½ SM.</p> <p><b>▲</b> ASR</p>	<p>ALSF-2</p> <p><b>A</b></p>	<p>MISSED APPROACH: Climb to 1300 then climbing right turn to 3000 on FWA R-134 to OSBER INT/FWA 22 DME and hold.</p>
--	-------------------------------	---

<p>ATIS <b>121.25 360.825</b></p>	<p>FORT WAYNE APP CON <b>127.2 284.6</b></p>	<p>FORT WAYNE TOWER <b>119.1 269.325</b></p>	<p>GND CON <b>121.9 348.6</b></p>	<p>CLNC DEL <b>124.75</b></p>
---------------------------------------	--	--	---------------------------------------	-----------------------------------



ELEV	815	<b>D</b> TDZE	815
HRL Rwy 5-23 and 14-32			
REIL Rwy 14 and 23			
TDZ/CL Rwy 5			
FAF to MAP 5.1 NM			
Knots	60	90	120 150 180
Min:Sec	5:06	3:24	2:33 2:02 1:42

CATEGORY	A	B	C	D	E
S-ILS 5		1015/18	200 (200-½)		1015/24 200 (200-½)
S-LOC 5	1300/24	485 (500-½)	1300/50 485 (500-1)		
<b>C</b> CIRCLING	1300-1	485 (500-1)	1420-1¾ 605 (700-1¾)	1520-2¼ 705 (800-2¼)	1520-2½ 705 (800-2½)

EC-2, 03 OCT 2024 to 31 OCT 2024

EC-2, 03 OCT 2024 to 31 OCT 2024