

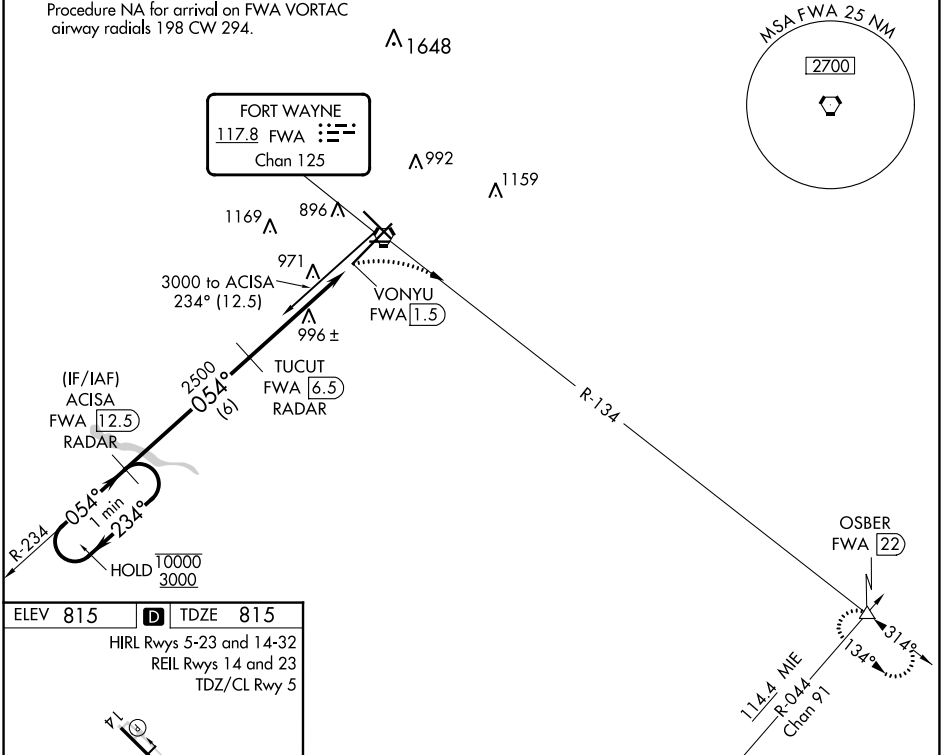
VORTAC FWA 117.8 Chan 125	APP CRS 054°	Rwy Idg 11981 TDZE 815 Apt Elev 815
---	------------------------	--

VOR or TACAN RWY 5

FORT WAYNE INTL (FWA)

DME or RADAR required.		ALSF-2 	MISSED APPROACH: Climbing right turn to 3000 on FWA VORTAC R-134 to OSBER INT/FWA 22 DME and hold.		
ATIS 121.25 360.825	FORT WAYNE APP CON 127.2 284.6	FORT WAYNE TOWER 119.1 269.325	GND CON 121.9 348.6	CLNC DEL 124.75	

Procedure NA for arrival on FWA VORTAC airway radials 198 CW 294.



ELEV 815 **D** TDZE 815

HIRL Rwy 5-23 and 14-32
REIL Rwy 14 and 23
TDZ/CL Rwy 5

FAF to MAP 5 NM

Knots	60	90	120	150	180
Min:Sec	5:00	3:20	2:30	2:00	1:40

One Minute Holding Pattern	ACISA FWA 12.5 RADAR	TUCUT FWA 6.5 RADAR	3000	FWA R-134	OSBER
CATEGORY	A	B	C	D	E
S-5	1320/24	505 (600-1/2)	1320/55	505 (600-1)	1320/60 505 (600-1 1/4)
<input checked="" type="checkbox"/> CIRCLING	1320-1	505 (600-1)	1360-1 1/2 545 (600-1 1/2)	1520-2 1/4 705 (800-2 1/4)	1520-2 1/2 705 (800-2 1/2)

EC-2, 03 OCT 2024 to 31 OCT 2024

EC-2, 03 OCT 2024 to 31 OCT 2024