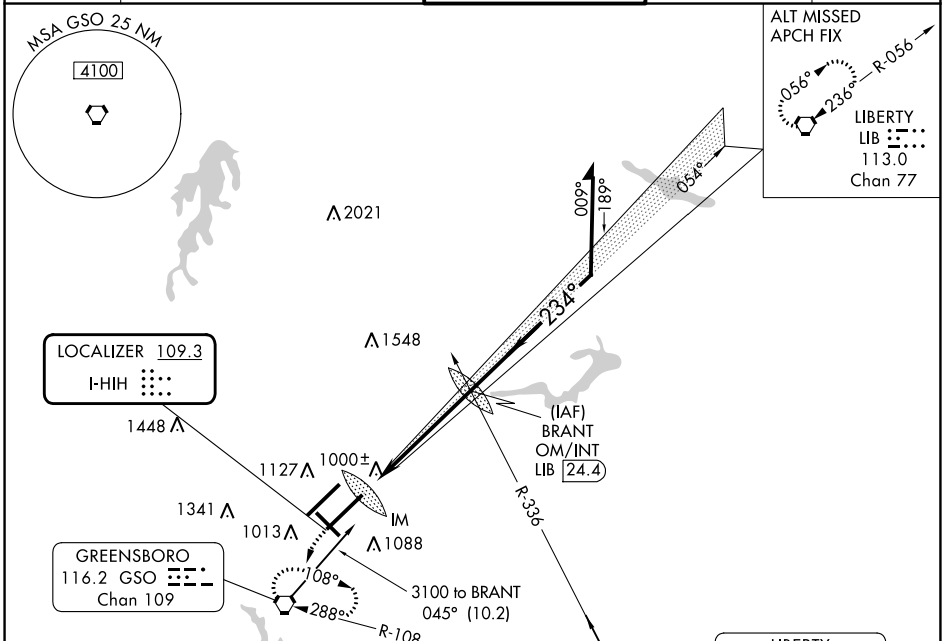


LOC I-HIH <b>109.3</b>	APP CRS <b>234°</b>	Rwy Idg TDZE Apt Elev	<b>9601</b> <b>889</b> <b>926</b>
---------------------------	------------------------	-----------------------------	---

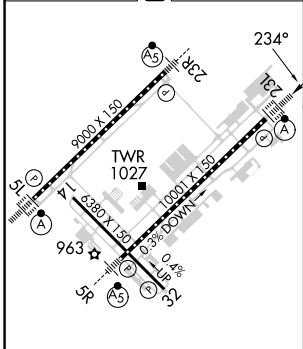
# ILS or LOC RWY 23L

PIEDMONT TRIAD INTL (GSO)

D-ATIS <b>128.55</b>	GREENSBORO APP CON <b>124.35 269.225</b> (250°-049°) <b>126.6 327.075</b> (050°-249°)		GREENSBORO TOWER <b>119.1 290.325</b>	GND CON <b>121.9 348.6</b>	CLNC DEL <b>121.75</b>
	Simultaneous approach authorized with Rwy 23R.			ALSF-2 	MISSED APPROACH: Climb to 1300 then climbing left turn to 3100 direct GSO VORTAC and hold, continue climb-in-hold to 3100.

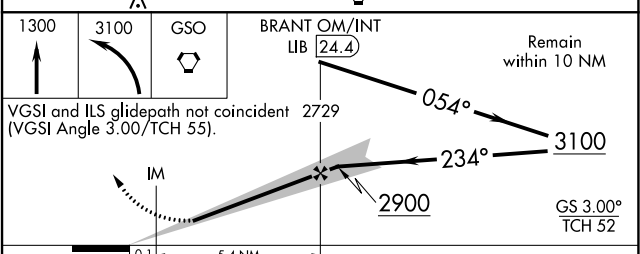


ELEV 926	<b>D</b>	TDZE 889
----------	----------	----------



TDZ/CL Rws 5L, 23R and 23L  
REIL Rwy 32  
HIRL Rws 14-32, 5R-23L and 5L-23R  
FAF to MAP 5.5 NM

Knots	60	90	120	150	180
Min:Sec	5:30	3:40	2:45	2:12	1:50



CATEGORY	A	B	C	D
S-ILS 23L	1089/18		200 (200-1/2)	
S-LOC 23L	1260/24		371 (400-1/2) 1260/40 371 (400-3/4)	
<b>C</b> CIRCLING	1440-1 514 (600-1)		1700-2 1/4 774 (800-2 1/4) 1700-2 1/2 774 (800-2 1/2)	

SE-2, 03 OCT 2024 to 31 OCT 2024

SE-2, 03 OCT 2024 to 31 OCT 2024