

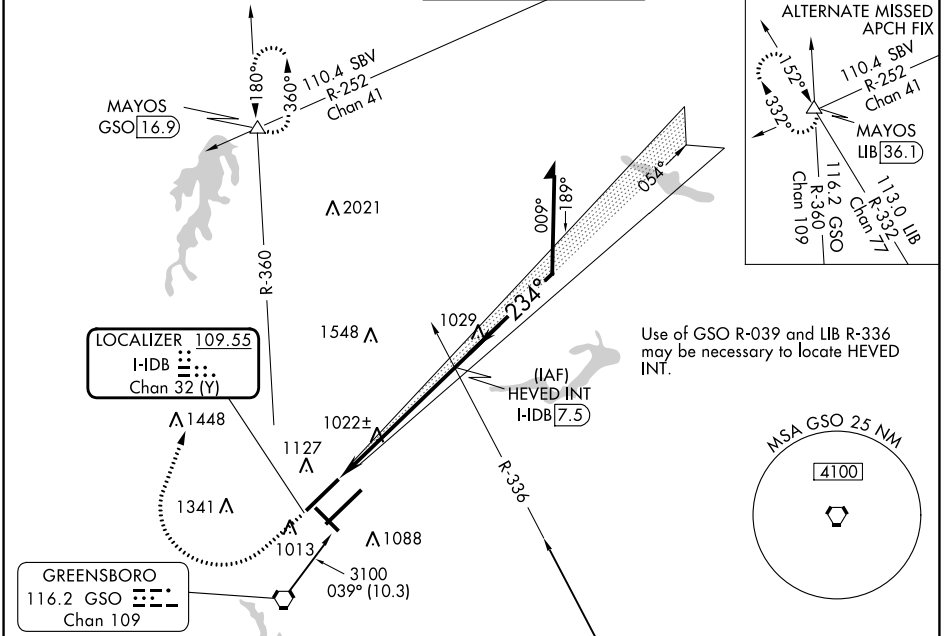
LOC/DME I-DBD	APP CRS	Rwy Idg TDZE	9000
109.55	234°	864	864
Chan 32 (Y)		Apt Elev	926

ILS or LOC RWY 23R

PIEDMONT TRIAD INTL (GSO)

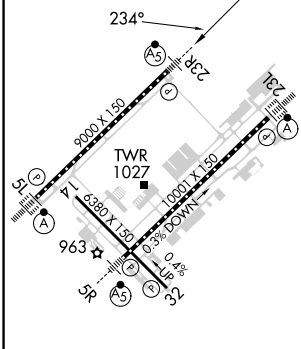
<p>Simultaneous approach authorized.</p>	<p>MALS</p>	<p>MISSED APPROACH: Climb to 1500 then climbing right turn to 3100 on heading 015° and GSO VORTAC R-360 to MAYOS INT/GSO 16.9 DME and hold.</p>	

D-ATIS	GREENSBORO APP CON	GREENSBORO TOWER	GND CON	CLNC DEL
128.55	124.35 269.225 (250°-049°) 126.6 327.075 (050°-249°)	119.1 290.325	121.9 348.6	121.75



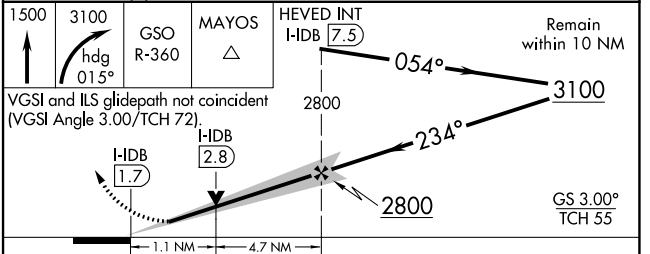
Use of GSO R-039 and LIB R-336 may be necessary to locate HEVED INT.

ELEV 926	D	TDZE 864
----------	---	----------



TDZ/CL Rws 5L, 23R and 23L
REIL Rwy 32
HIRL Rws 14-32, 5R-23L and 5L-23R
FAF to MAP 5.8 NM

Knots	60	90	120	150	180
Min:Sec	5:48	3:52	2:54	2:19	1:56



CATEGORY	A	B	C	D
S-ILS 23R	1064/18		200 (200-1/2)	
S-LOC 23R	1280/24	416 (400-1/2)	1280/40	416 (400-3/4)
CIRCLING	1440-1 514 (600-1)		1700-2 1/4 774 (800-2/4)	1700-2 1/2 774 (800-2/2)

SE-2, 03 OCT 2024 to 31 OCT 2024

SE-2, 03 OCT 2024 to 31 OCT 2024