

LOC/DME I-GFN 111.15 Chan 48 (Y)	APP CRS 325°	Rwy Idg 6380 TDZE 902 Apt Elev 926
---	------------------------	---

ILS Z or LOC Z RWY 32

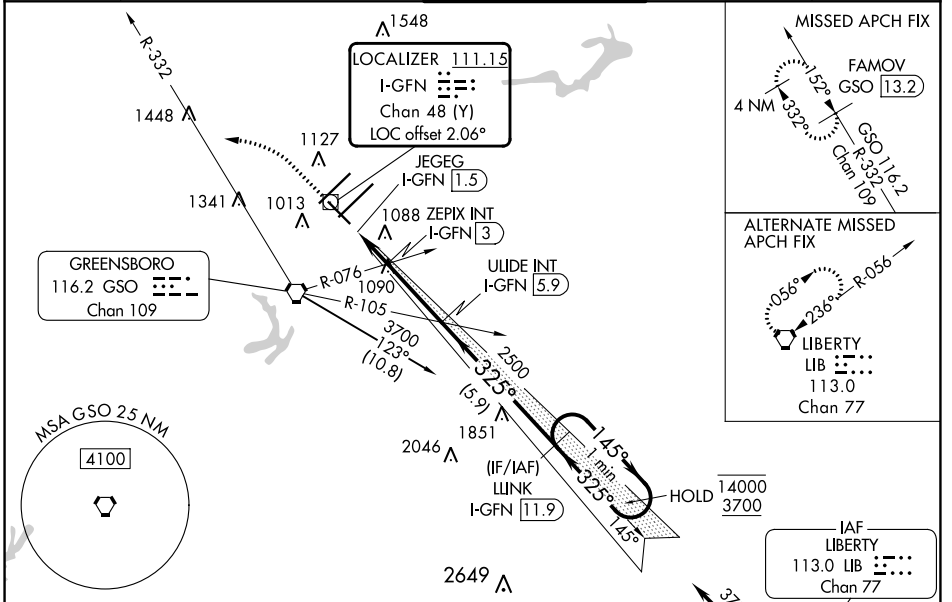
PIEDMONT TRIAD INTL (GSO)

DME required.

▼ Rwy 32 helicopter visibility reduction below $\frac{3}{4}$ SM NA.

▲ MISSED APPROACH: Climb to 1400 then climbing left turn to 3700 on heading 307° and GSO VORTAC R-332 to FAMOV/GSO 13.2 DME and hold.

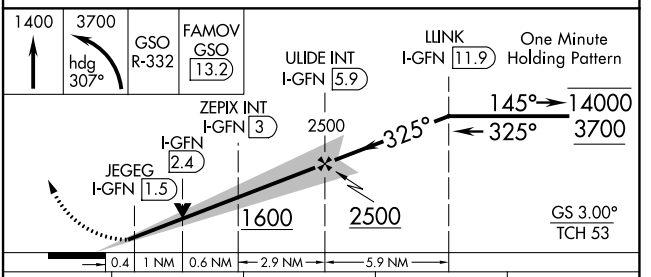
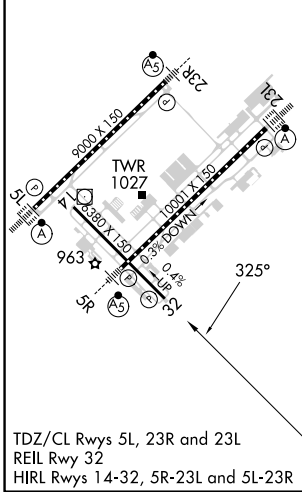
D-ATIS 128.55	GREENSBORO APP CON 124.35 269.225 (250°-049°) 126.6 327.075 (050°-249°)	GREENSBORO TOWER 119.1 290.325	GND CON 121.9 348.6	CLNC DEL 121.75
-------------------------	---	--	-------------------------------	---------------------------



SE-2, 03 OCT 2024 to 31 OCT 2024

SE-2, 03 OCT 2024 to 31 OCT 2024

ELEV 926	D TDZE 902
----------	-------------------



CATEGORY	A	B	C	D
S-ILS 32	1152- $\frac{3}{4}$ 250 (300- $\frac{3}{4}$)			
S-LOC 32	1400-1	498 (500-1)	1400-1 $\frac{3}{8}$	498 (500-1 $\frac{3}{8}$)
C CIRCLING	1440-1	514 (600-1)	1700-2 $\frac{1}{4}$ 774 (800-2 $\frac{1}{4}$)	1700-2 $\frac{1}{2}$ 774 (800-2 $\frac{1}{2}$)