

WAAS CH 97710 W23A	APP CRS 234°	Rwy Idg TDZE Apt Elev	9601 889 926
--	------------------------	-----------------------------	---

RNAV (GPS) RWY 23L

PIEDMONT TRIAD INTL (GSO)

RNP APCH - GPS.

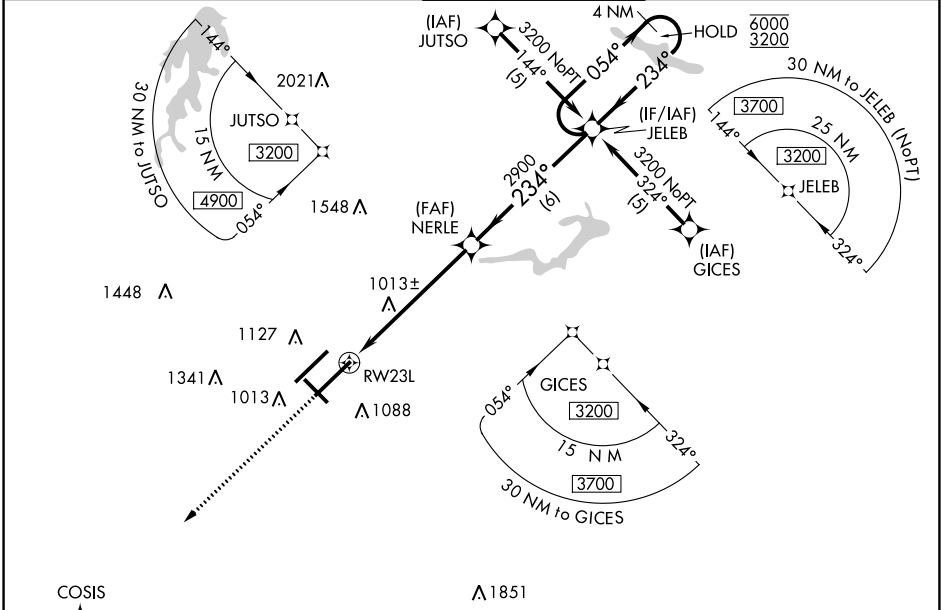
▼ Simultaneous approach authorized. LNAV procedure NA during simultaneous operations.
▲ Use of FD or AP required during simultaneous operations. For uncompensated Baro-VNAV systems, LNAV/VNAV NA below -16°C or above 54°C.

ALSF-2



MISSED APPROACH:
Climb to 3000 direct COSIS and hold.

D-ATIS 128.55	GREENSBORO APP CON 124.35 269.225 (250°-049°) 126.6 327.075 (050°-249°)	GREENSBORO TOWER 119.1 290.325	GND CON 121.9 348.6	CLNC DEL 121.75
-------------------------	---	--	-------------------------------	---------------------------



SE-2, 03 OCT 2024 to 31 OCT 2024

SE-2, 03 OCT 2024 to 31 OCT 2024

3000 COSIS		VGS1 and RNAV glidepath not coincident (VGS1 Angle 3.00/TCH 55).		4 NM Holding Pattern	
↑					
		NERLE 2900		JELEB 6000 3200	
1.1 NM to RWY 23L		234°		054°	
1.1 NM		5 NM		6 NM	
CATEGORY	A	B	C	D	
LPV DA		1089/18	200 (200-½)		
LNAV/VNAV DA		1283/35	394 (400-¾)		
LNAV MDA	1280/24	391 (400-½)	1280/35	391 (400-¾)	
C CIRCLING	1440-1	514 (600-1)	1700-2¼ 774 (800-2¼)	1700-2½ 774 (800-2½)	

