

| | | | |
|--|------------------------|-----------------------------|--|
| WAAS CH 53610 W05A | APP CRS 054° | Rwy Idg TDZE Apt Elev | 10001 900 926 |
|--|------------------------|-----------------------------|--|


RNAV (GPS) RWY 5R

PIEDMONT TRIAD INTL (GSO)

RNP APCH-GPS.

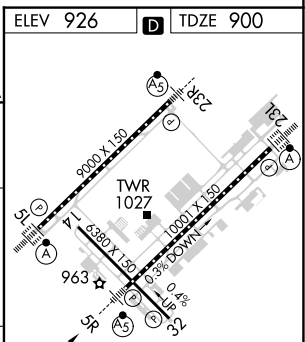
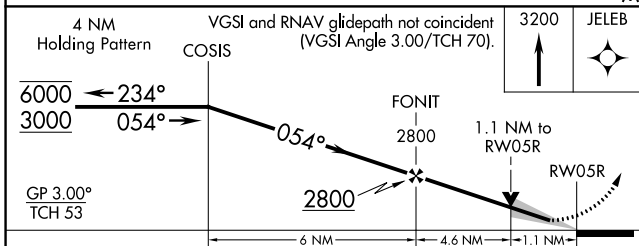
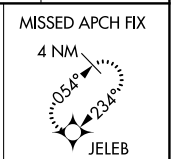
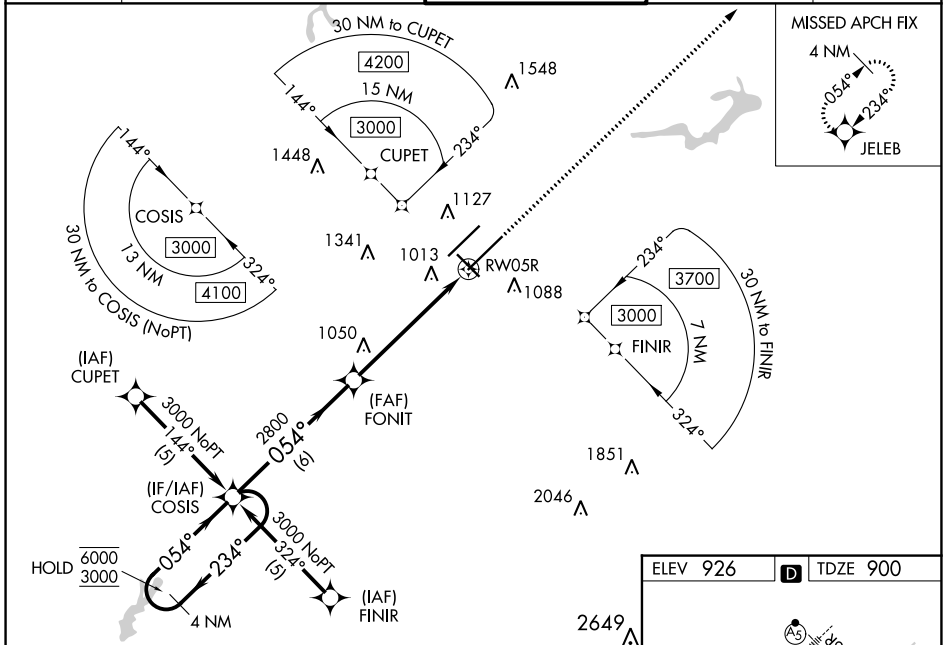
▼ For uncompensated Baro-VNAV systems, LNAV/VNAV NA below -16°C or above 54°C.
 ▲ Simultaneous approach authorized. Use of FD or AP required during simultaneous operations.
 LNAV procedure NA during simultaneous operations. For inop ALS, increase LNAV Cat C/D visibility to RVR 6000.
 **1800 RVR authorized with use of FD or AP or HUD to DA.

MALSRS

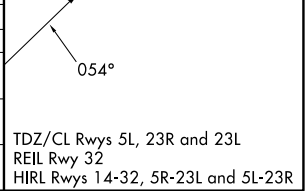


MISSED APPROACH:
Climb to 3200 direct JELEB and hold.

| | | | | |
|-------------------------|---|--|-------------------------------|---------------------------|
| D-ATIS 128.55 | GREENSBORO APP CON 124.35 269.225 (250°-049°) 126.6 327.075 (050°-249°) | GREENSBORO TOWER 119.1 290.325 | GND CON 121.9 348.6 | CLNC DEL 121.75 |
|-------------------------|---|--|-------------------------------|---------------------------|



| CATEGORY | A | B | C | D |
|--------------|---------|-------------|-------------------------|-------------------------|
| LPV DA** | | 1100/24 | 200 (200-½) | |
| LNAV/VNAV DA | | 1321/40 | 421 (400-¾) | |
| LNAV MDA | 1300/24 | 400 (400-½) | 1300/40 | 400 (400-¾) |
| CIRCLING | 1440-1 | 514 (600-1) | 1700-2¼ 774 (800-2¼) | 1700-2½ 774 (800-2½) |



SE-2, 03 OCT 2024 to 31 OCT 2024

SE-2, 03 OCT 2024 to 31 OCT 2024