

(BLTWY7.BLTWY) 21280

AL-198 (FAA)

WILLIAM P HOBBY (HOU)
HOUSTON, TEXAS

BLTWY SEVEN DEPARTURE (RNAV)

D-ATIS 124.6
CLNC DEL
125.45
CPDLC
GND CON
121.9
HOBBY TOWER
118.7 256.9
HOUSTON DEP CON
132.25 285.425

**TOP ALTITUDE:
16000**

NOTE: RADAR required.
NOTE: DME/DME/IRU or GPS required.
NOTE: RNAV 1.

TAKEOFF MINIMUMS

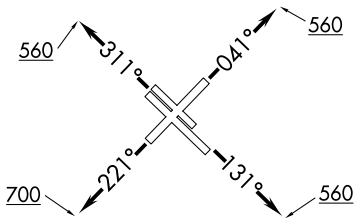
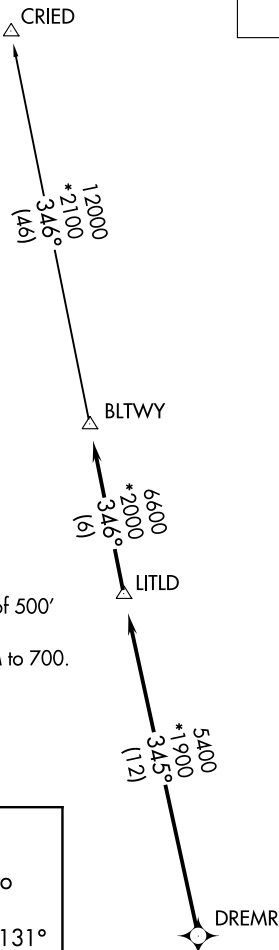
Rwys 4, 13L/R, 31L/R: Standard with minimum climb of 500' per NM to 560.
Rwy 22: Standard with minimum climb of 500' per NM to 700.

DEPARTURE ROUTE DESCRIPTION

TAKEOFF RUNWAY 4: Climb on heading 041° to 560 for RADAR vectors to DREMR, thence
TAKEOFF RUNWAYS 13L/R: Climb on heading 131° to 560 for RADAR vectors to DREMR, thence
TAKEOFF RUNWAY 22: Climb on heading 221° to 700 for RADAR vectors to DREMR, thence
TAKEOFF RUNWAYS 31L/R: Climb on heading 311° to 560 for RADAR vectors to DREMR, thence

. . . . on track 345° to LITLD, then on track 346° to BLTWY, then on (transition). Maintain 16000 as assigned by ATC. Expect filed altitude 10 minutes after departure.

CRIED TRANSITION (BLTWY7.CRIED)



NOTE: Chart not to scale.

SC-5, 03 OCT 2024 to 31 OCT 2024

SC-5, 03 OCT 2024 to 31 OCT 2024

BLTWY SEVEN DEPARTURE (RNAV)
(BLTWY7.BLTWY) 07OCT21

HOUSTON, TEXAS
WILLIAM P HOBBY (HOU)