

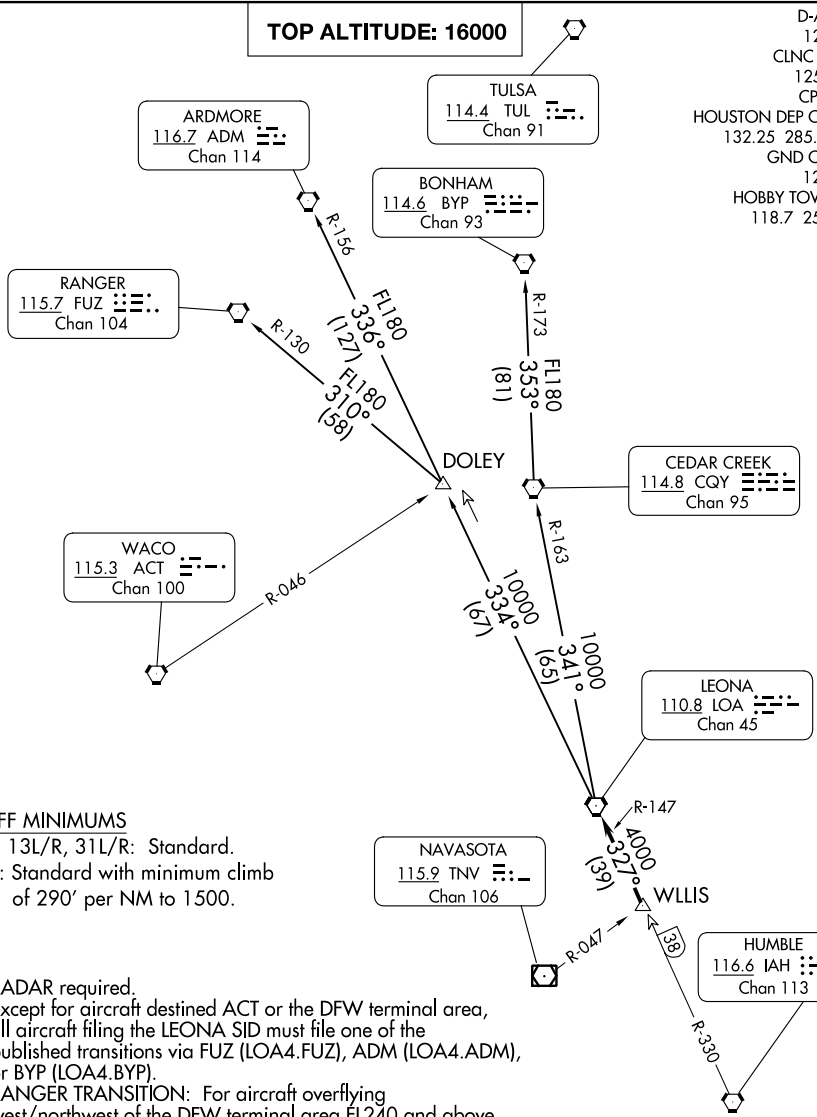
# LEONA FOUR DEPARTURE

AL-198 (FAA)

WILLIAM P HOBBY (HOU)  
HOUSTON, TEXAS

**TOP ALTITUDE: 16000**

D-ATIS  
124.6  
CLNC DEL  
125.45  
CPDLC  
HOUSTON DEP CON  
132.25 285.425  
GND CON  
121.9  
HOBBY TOWER  
118.7 256.9



### TAKEOFF MINIMUMS

Rwys 4, 13L/R, 31L/R: Standard.  
Rwy 22: Standard with minimum climb  
of 290' per NM to 1500.

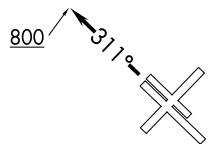
NOTE: RADAR required.

NOTE: Except for aircraft destined ACT or the DFW terminal area,  
all aircraft filing the LEONA SID must file one of the  
published transitions via FUZ (LOA4.FUZ), ADM (LOA4.ADM),  
or BYP (LOA4.BYP).

NOTE: RANGER TRANSITION: For aircraft overflying  
west/northwest of the DFW terminal area FL240 and above.

NOTE: ARDMORE TRANSITION: For aircraft overflying  
north/northwest of the DFW terminal area FL240 and  
above.

NOTE: BONHAM TRANSITION: For aircraft overflying/landing  
TUL VORTAC FL240 and above.



NOTE: Chart not to scale.

(CONTINUED ON FOLLOWING PAGE)

SC-5, 03 OCT 2024 to 31 OCT 2024

SC-5, 03 OCT 2024 to 31 OCT 2024



DEPARTURE ROUTE DESCRIPTION

TAKEOFF RUNWAYS 4, 13L/R, 22: Climb on assigned heading for RADAR vectors to WLLIS INT, maintain 16000. Expect filed altitude 10 minutes after departure, thence . . . .

TAKEOFF RUNWAYS 31L/R: Climb on heading 311° to 800 before turning, then climb on assigned heading for RADAR vectors to WLLIS INT, maintain 16000. Expect filed altitude 10 minutes after departure, thence . . . .

. . . . on LOA R-147 to LOA VORTAC.

ARDMORE TRANSITION (LOA4.ADM): From over LOA VORTAC on LOA R-334 to DOLEY INT, then on ADM R-156 to ADM VORTAC.

BONHAM TRANSITION (LOA4.BYP): From over LOA VORTAC on LOA R-341 and CQY R-163 to CQY VORTAC, then on BYP R-173 to BYP VORTAC.

RANGER TRANSITION (LOA4.FUZ): From over LOA VORTAC on LOA R-334 to DOLEY INT, then on FUZ R-130 to FUZ VORTAC.

SC-5, 03 OCT 2024 to 31 OCT 2024

SC-5, 03 OCT 2024 to 31 OCT 2024