

WAAS CH <b>86209</b> <b>W04A</b>	APP CRS <b>041°</b>	Rwy Idg <b>7602</b> TDZE <b>44</b> Apt Elev <b>46</b>
--	------------------------	---

# RNAV (GPS) RWY 4

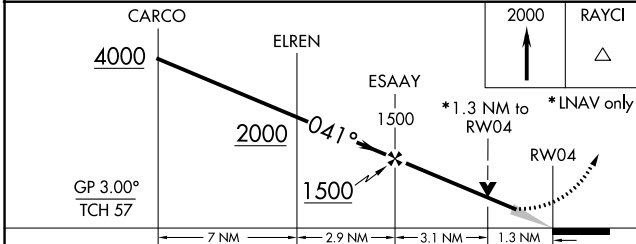
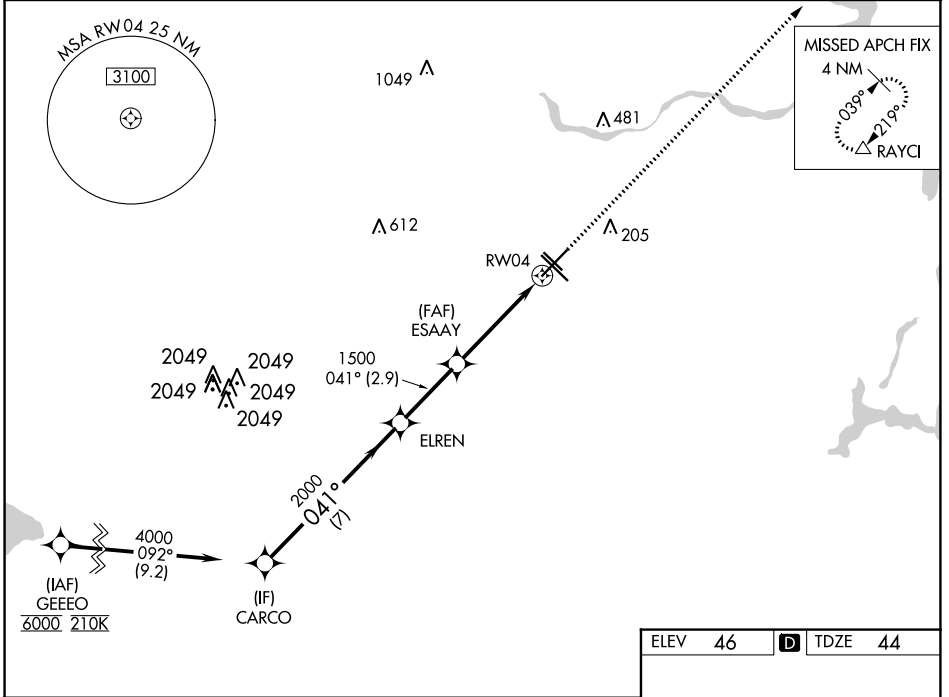
WILLIAM P HOBBY (HOU)

**⚠** For uncompensated Baro-VNAV systems, LNAV/VNAV NA below -2°C (29°F) or above 54°C (130°F). For inop ALSF-2, increase LPV Cat E visibility to RVR 4000, LNAV/VNAV all Cats visibility to 1¼ miles and LNAV Cat C/D/E visibility to 1¾ mile. DME/DME RNP-0.3 NA.

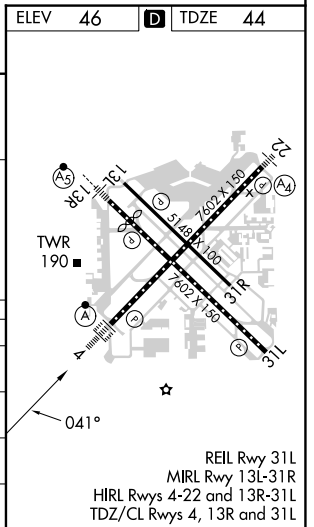
ALSF-2

**MISSED APPROACH:**  
Climb to 2000 direct RAYCI and hold.

D-ATIS <b>124.6</b>	HOUSTON APP CON <b>120.05 379.1 EAST</b> <b>124.35 316.15 WEST</b>	HOBBY TOWER <b>118.7 256.9</b>	GND CON <b>121.9</b>	CLNC DEL <b>125.45</b>	CPDLC
------------------------	--	-----------------------------------	-------------------------	---------------------------	-------



CATEGORY	A	B	C	D	E
LPV DA		244/18	200 (200-½)		
LNAV/VNAV DA		440/45	396 (400-¾)		
LNAV MDA	520/24	476 (500-½)	520/50	476 (500-1)	
<b>C</b> CIRCLING	520-1	474 (500-1)	740-2¼	694 (500-2¼)	860-3 814 (900-3)



SC-5, 03 OCT 2024 to 31 OCT 2024

SC-5, 03 OCT 2024 to 31 OCT 2024