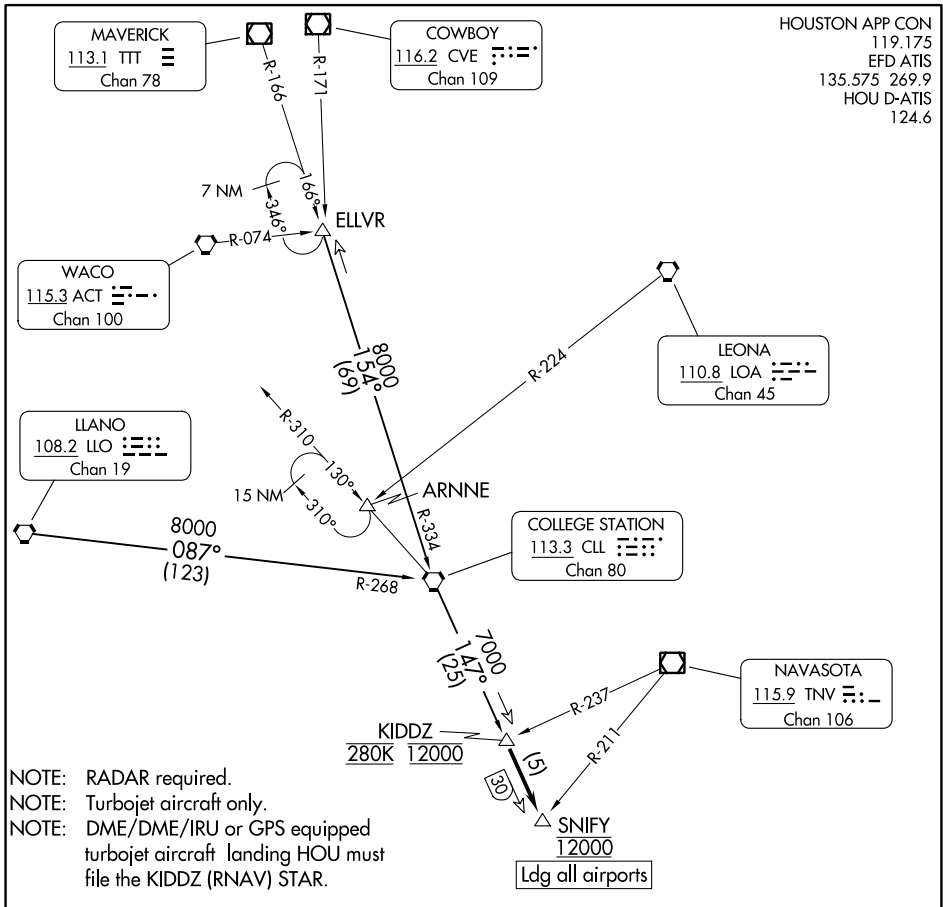


SNIFY ONE ARRIVAL

HOUSTON, TEXAS

HOUSTON APP CON
 119.175
 EFD ATIS
 135.575 269.9
 HOU D-ATIS
 124.6



NOTE: RADAR required.
 NOTE: Turbojet aircraft only.
 NOTE: DME/DME/IRU or GPS equipped turbojet aircraft landing HOU must file the KIDDZ (RNAV) STAR.

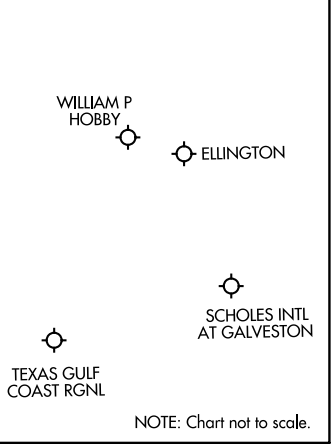
ARRIVAL ROUTE DESCRIPTION

COLLEGE STATION TRANSITION (CLL.SNIFY1): From over CLL VORTAC on CLL R-147 to KIDDZ. Thence....

ELLVR TRANSITION (ELLVR.SNIFY1): From over ELLVR on CLL R-334 to CLL VORTAC, then on CLL R-147 to KIDDZ. Thence....

LLANO TRANSITION (LLO.SNIFY1): From over LLO VORTAC on LLO R-087 and CLL R-268 to CLL VORTAC, then on CLL R-147 to KIDDZ. Thence....

...from KIDDZ on CLL R-147 to cross SNIFY at 12000.
 Expect vectors to final approach course at or prior to SNIFY.



NOTE: Chart not to scale.

SNIFY ONE ARRIVAL

HOUSTON, TEXAS

SC-5, 03 OCT 2024 to 31 OCT 2024

SC-5, 03 OCT 2024 to 31 OCT 2024