


WAAS CH 72809 W18A	APP CRS 180°	Rwy Idg TDZE Apt Elev	8536 653 655
--	------------------------	-----------------------------	---

RNAV (GPS) RWY 18

LA CROSSE RGNL (LSE)

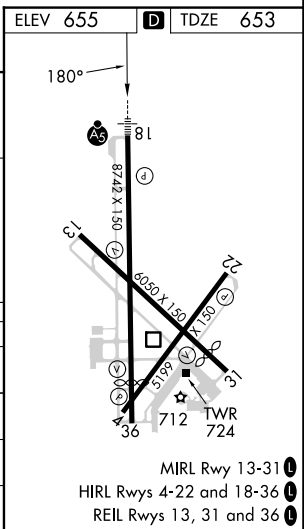
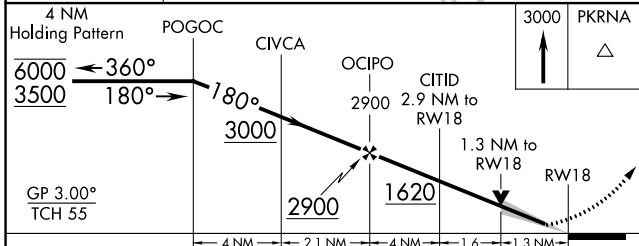
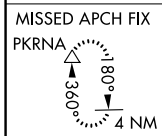
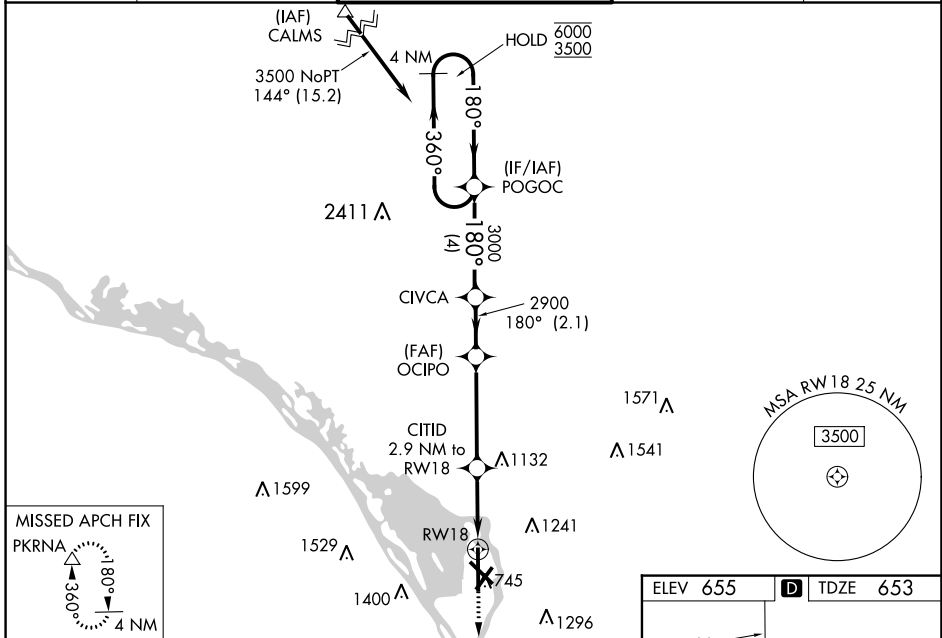
RNP APCH - GPS.

⚠ For uncompensated Baro-VNAV systems, LNAV/VNAV NA below -19°C or above 54°C. When local altimeter setting not received, use ONA altimeter setting and increase LPV DA to 907 feet; increase LNAV/VNAV DA to 1174 feet; increase all MDAs 60 feet and Circling visibility Cat B ¼ SM. For inop ALS, increase LNAV/VNAV all Cats visibility to 1½ SM, and LNAV Cats C and D to 1½ SM. Baro-VNAV and VDP NA when using ONA altimeter setting.

MALSR 

MISSED APPROACH:
Climb to 3000 direct PKRNA and hold.

ATIS 124.95	MINNEAPOLIS CENTER 128.6 363.0	LA CROSSE TOWER ★ 118.45 (CTAF) 251.075	GND CON 121.8	UNICOM 122.95
-----------------------	--	---	-------------------------	-------------------------



CATEGORY	A	B	C	D
LPV DA		853-½	200 (200-½)	
LNAV/VNAV DA		1120-1	467 (500-1)	
LNAV MDA	1120-½	467 (500-½)	1120-1	467 (500-1)
C CIRCLING	1140-1 485 (500-1)	1460-1 805 (900-1)	1760-3 1105 (1200-3)	1820-3 1165 (1200-3)

EC-3, 03 OCT 2024 to 31 OCT 2024

EC-3, 03 OCT 2024 to 31 OCT 2024