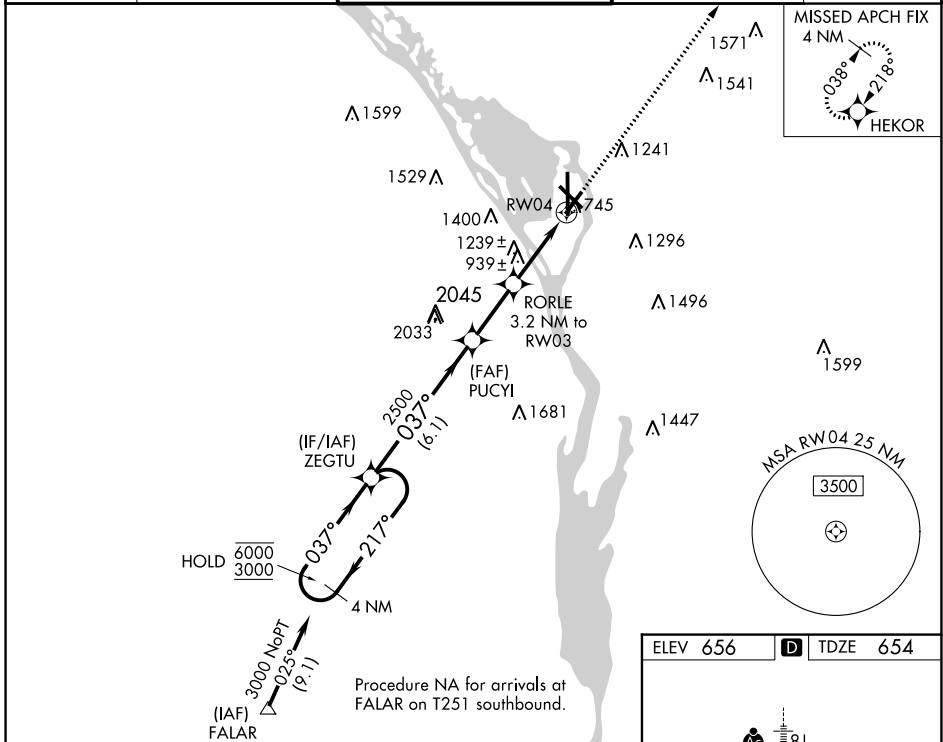


WAAS CH <b>82622</b> <b>W04A</b>	APP CRS <b>037°</b>	Rwy Idg <b>5199</b> TDZE <b>654</b> Apt Elev <b>656</b>
--	------------------------	---

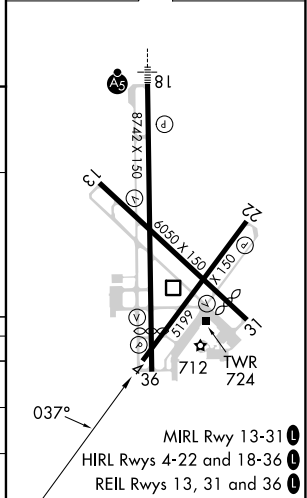
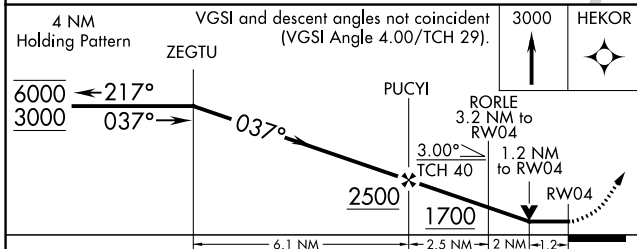
# RNAV (GPS) RWY 4

LA CROSSE RGNL (LSE)

RNP APCH. Circling Rwy 22 NA at night. Rwy 22 helicopter visibility reduction below 3/4 SM NA. -22°C		MISSED APPROACH: Climb to 3000 direct HEKOR and hold.		
ATIS <b>124.95</b>	MINNEAPOLIS CENTER <b>128.6 363.0</b>	LA CROSSE TOWER * <b>118.45 (CTAF) 251.075</b>	GND CON <b>121.8</b>	UNICOM <b>122.95</b>



ELEV 656	<b>D</b> TDZE 654
----------	-------------------



CATEGORY	A	B	C	D
LP MDA	1200-1	546 (600-1)	1200-1 5/8	546 (600-1 5/8)
LNAV MDA	1620-1 1/4 966 (1000-1 1/4)	1620-1 1/2 966 (1000-1 1/2)	1620-3	966 (1000-3)
<b>C</b> CIRCLING	1620-1 1/4 964 (1000-1 1/4)	1620-1 1/2 964 (1000-1 1/2)	1760-3 1104 (1200-3)	1820-3 1164 (1200-3)

EC-3, 03 OCT 2024 to 31 OCT 2024

EC-3, 03 OCT 2024 to 31 OCT 2024