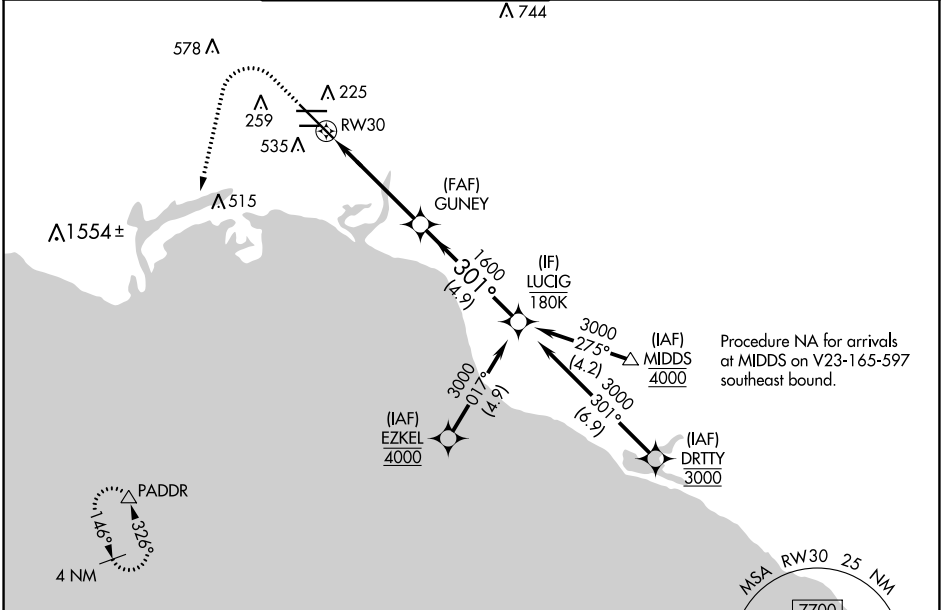


APP CRS	Rwy Idg	7414
301°	TDZE	38
	Apt Elev	60

RNAV (RNP) Y RWY 30

LONG BEACH (DAUGHERTY FLD) (LGB)

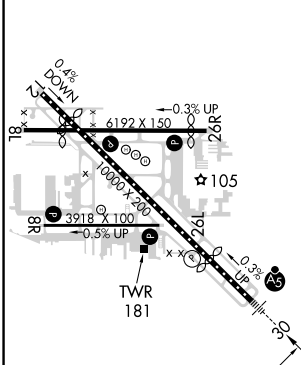
RNP AR APCH.		MALSR		MISSED APPROACH: Climb to 800 then climbing left turn to 3000 direct PADDR and hold.	
<p>For uncompensated Baro-VNAV systems, procedure NA below 4° C or above 54° C.</p>					
ATIS	SOCAL APP CON	LONG BEACH TOWER*	GND CON	CLNC DEL	UNICOM
127.75	125.35 316.125	120.5 257.6 (Rwy 12) 119.4 (CTAF) 257.6 (Rwy 30)	133.0 257.6	118.15	122.95



SW-3, 03 OCT 2024 to 31 OCT 2024

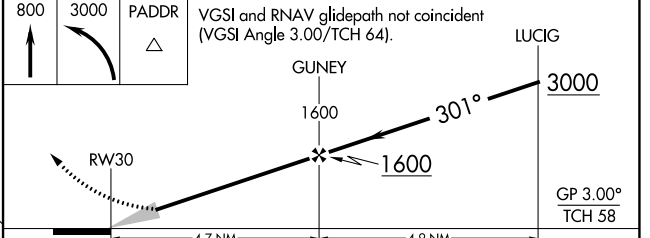
SW-3, 03 OCT 2024 to 31 OCT 2024

ELEV 60	D	TDZE 38
---------	----------	---------



TDZ/CL Rwy 30	105
HIRL Rwy 12-30	105
HIRL Rwy 8R-26L	105
MIRL Rwy 8L-26R	105
REIL Rws 8R, 12, 26L, and 26R	105

800	3000	PADDR	VGSI and RNAV glidepath not coincident (VGSI Angle 3.00/TCH 64).



CATEGORY	A	B	C	D
RNP 0.30 DA		384/30	346 (400-5%)	

AUTHORIZATION REQUIRED