

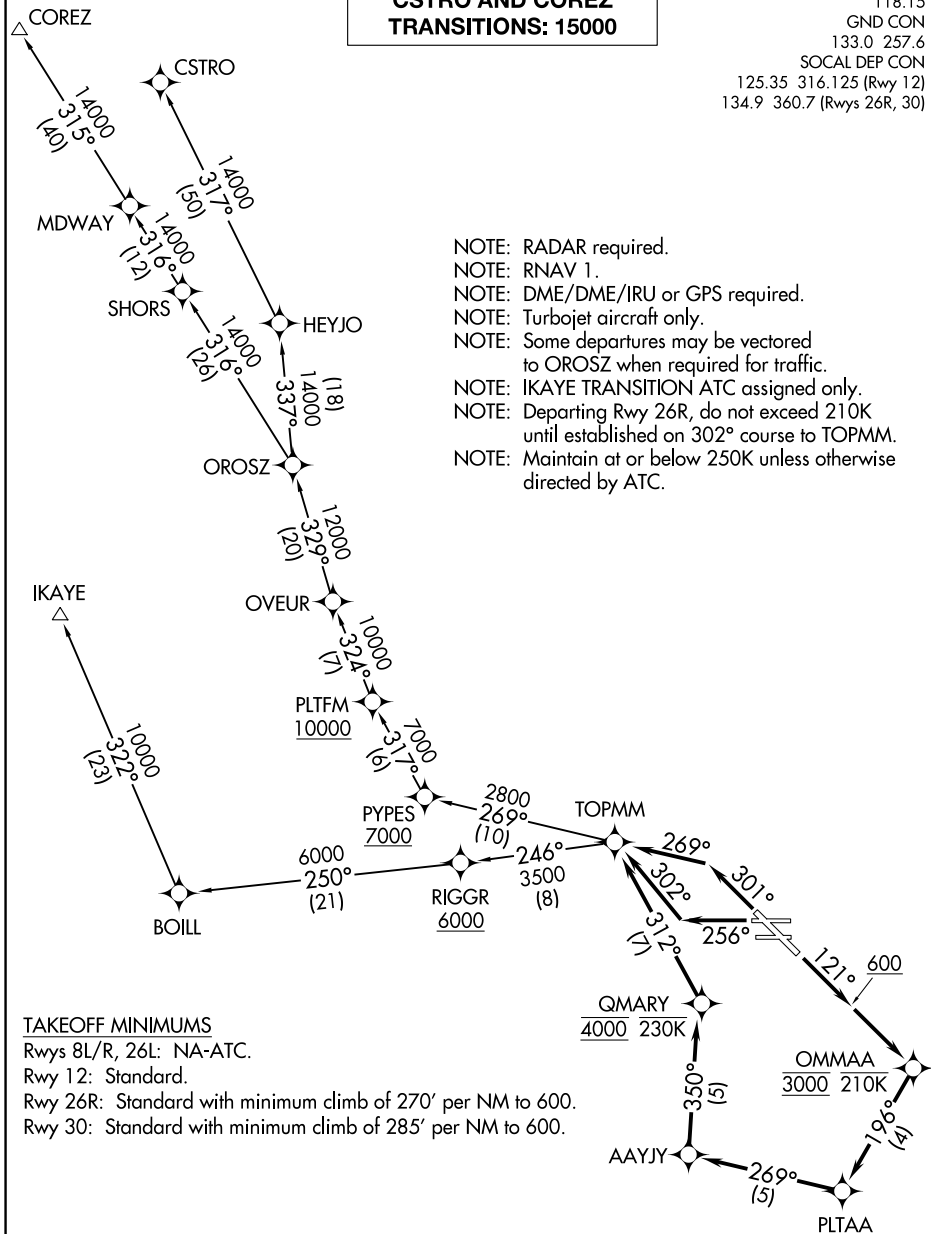
**TOP ALTITUDE:**  
**IKAYE TRANSITION: 12000;**  
**CSTRO AND COREZ**  
**TRANSITIONS: 15000**

ATIS  
127.75  
CLNC DEL  
118.15  
GND CON  
133.0 257.6  
SOCAL DEP CON  
125.35 316.125 (Rwy 12)  
134.9 360.7 (Rwys 26R, 30)

- NOTE: RADAR required.
- NOTE: RNAV 1.
- NOTE: DME/DME/IRU or GPS required.
- NOTE: Turbojet aircraft only.
- NOTE: Some departures may be vectored to OROSZ when required for traffic.
- NOTE: IKAYE TRANSITION ATC assigned only.
- NOTE: Departing Rwy 26R, do not exceed 210K until established on 302° course to TOPMM.
- NOTE: Maintain at or below 250K unless otherwise directed by ATC.

SW-3, 03 OCT 2024 to 31 OCT 2024

SW-3, 03 OCT 2024 to 31 OCT 2024



**TAKEOFF MINIMUMS**  
 Rwys 8L/R, 26L: NA-ATC.  
 Rwy 12: Standard.  
 Rwy 26R: Standard with minimum climb of 270' per NM to 600.  
 Rwy 30: Standard with minimum climb of 285' per NM to 600.

NOTE: Chart not to scale.

(NARRATIVE ON FOLLOWING PAGE)



DEPARTURE ROUTE DESCRIPTION

TAKEOFF RUNWAY 12: Climb heading 121° to 600, then direct to cross OMMAA at 3000 and at or below 210K, then on track 196° to PLTAA, then on track 269° to AAYJY, then on track 350° to cross QMARY at 4000 and at or below 230K, then on track 312° to TOPMM, thence. . . .

TAKEOFF RUNWAY 26R: Climb heading 256° to intercept course 302° to TOPMM, thence. . . .

TAKEOFF RUNWAY 30: Climb heading 301° to intercept course 269° to TOPMM, thence. . . .

. . . .on (transition). IKAYE transition maintain 12000; COREZ and CSTRO transitions maintain 15000. Expect filed altitude 10 minutes after departure.

COREZ TRANSITION (TOPMM4.COREZ)

CSTRO TRANSITION (TOPMM4.CSTRO)

IKAYE TRANSITION (TOPMM4.IKAYE)

SW-3, 03 OCT 2024 to 31 OCT 2024

SW-3, 03 OCT 2024 to 31 OCT 2024