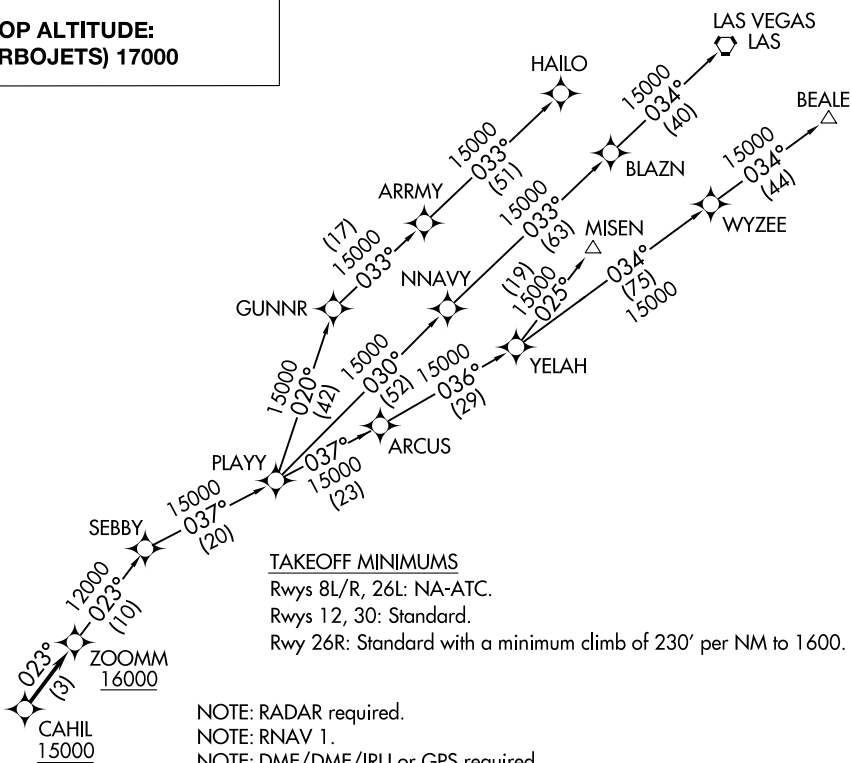
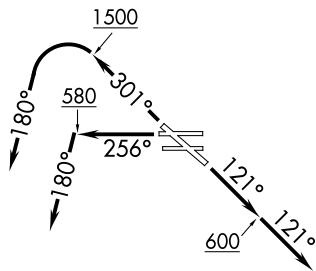


**TOP ALTITUDE:
(TURBOJET) 17000**

ATIS
127.75
CLNC DEL
118.15
GND CON
133.0 257.6
SOCAL DEP CON
125.35 316.125 (Rwys 12)
127.2 269.6 (Rwys 26R, 30)

ZOOMM THREE DEPARTURE (RNAV)
(ZOOMM3, ZOOMM) 10SEP20

LONG BEACH (DAUGHERTY FLD) (LGB)
LONG BEACH, CALIFORNIA



(NARRATIVE ON FOLLOWING PAGE)

NOTE: Chart not to scale.

(ZOOMM3, ZOOMM) 21168
ZOOMM THREE DEPARTURE (RNAV) AL-236 (FAA)
LONG BEACH (DAUGHERTY FLD) (LGB)
LONG BEACH, CALIFORNIA



DEPARTURE ROUTE DESCRIPTION

TAKEOFF RUNWAY 12: Climb on heading 121° to 600, then on heading 121° or as assigned by ATC for vectors to cross CAHIL at or above 15000, then on track 023° to cross ZOOMM at or above 16000, thence. . . .

TAKEOFF RUNWAY 26R: Climb on heading 256° to 580, then on heading 180° or as assigned by ATC for vectors to cross CAHIL at or above 15000, then on track 023° to cross ZOOMM at or above 16000, thence. . . .

TAKEOFF RUNWAY 30: Climb on heading 301° to 1500, then left turn heading 180° or as assigned by ATC for vectors to cross CAHIL at or above 15000, then on track 023° to cross ZOOMM at or above 16000, thence. . . .

. . . .on (transition) turbojets maintain 17000, expect filed altitude 10 minutes after departure.

BEALE TRANSITION (ZOOMM3.BEALE)

HAILO TRANSITION (ZOOMM3.HAILO)

LAS VEGAS TRANSITION (ZOOMM3.LAS)

MISEN TRANSITION (ZOOMM3.MISEN)

NNAVY TRANSITION (ZOOMM3.NNAVY)

SW-3, 03 OCT 2024 to 31 OCT 2024

SW-3, 03 OCT 2024 to 31 OCT 2024