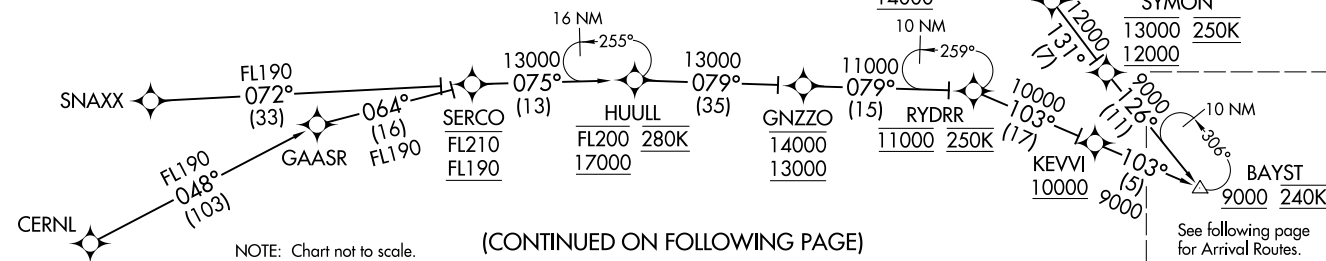


- BURGL TRANSITION (BURGL.BAYST1)
- CERNL TRANSITION (CERNL.BAYST1)
- FRASR TRANSITION (FRASR.BAYST1)
- HUULL TRANSITION (HUULL.BAYST1)
- MUPTT TRANSITION (MUPTT.BAYST1)
- REBRG TRANSITION (REBRG.BAYST1)
- RYDRR TRANSITION (RYDRR.BAYST1)
- SNAXX TRANSITION (SNAXX.BAYST1)

NOTE: RADAR required.  
 NOTE: RNAV 1.  
 NOTE: DME/DME/IRU or GPS required.  
 NOTE: Turbojet aircraft only.  
 NOTE: Expect Rwy 25L unless otherwise assigned by ATC.  
 NOTE: CERNL TRANSITION GPS required.  
 NOTE: BURGL, FRASR, HUULL, SNAXX, MUPTT, REBRG, RYDRR TRANSITIONS DME/DME/IRU or GPS required.  
 NOTE: Do not file-to be assigned by ATC.



(CONTINUED ON FOLLOWING PAGE)

SOCAL APP CON  
 124.5 235.975  
 D-ATIS ARR  
 133.8  
 LOS ANGELES TOWER  
 (N) 133.9 239.3  
 (S) 120.95 379.1

(BAYST.BAYST1) 18144  
**BAYST ONE ARRIVAL (RNAV) Transition Routes**

AL-237 (FAA)

LOS ANGELES INTL (LAX)  
 LOS ANGELES, CALIFORNIA

**BAYST ONE ARRIVAL (RNAV) Transition Routes**  
 (BAYST.BAYST1) 24MAY18

LOS ANGELES, CALIFORNIA  
 LOS ANGELES INTL (LAX)

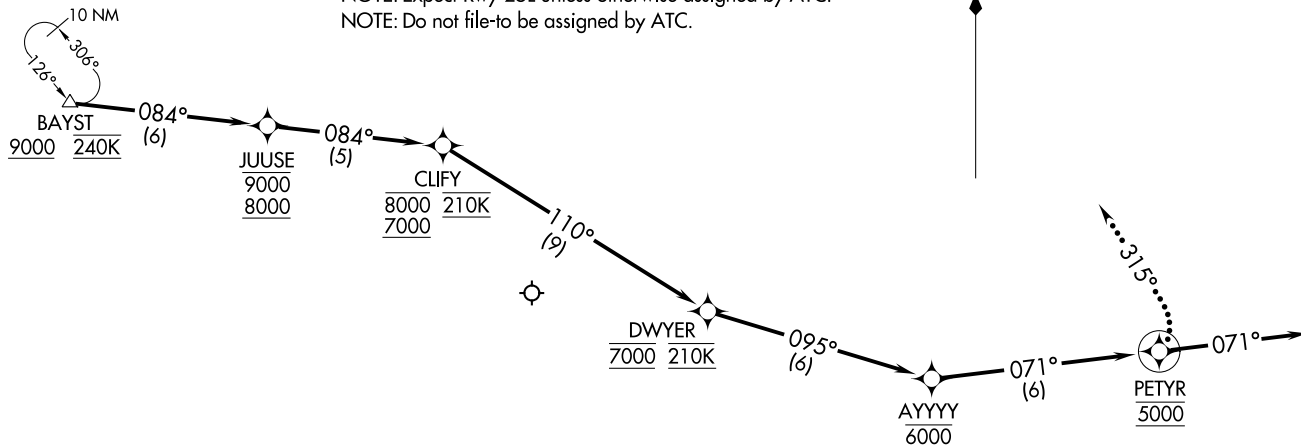
SOCAL APP CON  
 124.5 235.975  
 D-ATIS ARR  
 133.8  
 LOS ANGELES TOWER  
 (N) 133.9 239.3  
 (S) 120.95 379.1

(BAYST.BAYST1) 181.44  
**BAYST ONE ARRIVAL (RNAV)** Arrival Route

AL-237 (FAA)

LOS ANGELES INTL (LAX)  
 LOS ANGELES, CALIFORNIA

NOTE: RADAR required.  
 NOTE: RNAV 1.  
 NOTE: DME/DME/IRU or GPS required.  
 NOTE: Turbojet aircraft only.  
 NOTE: Expect Rwy 25L unless otherwise assigned by ATC.  
 NOTE: Do not file-to be assigned by ATC.



NOTE: Chart not to scale.

**ARRIVAL ROUTE DESCRIPTION**

From BAYST on track 084° to cross JUUSE between 8000 and 9000, then on track 084° to cross CLIFY between 7000 and 8000 and at 210K, then on track 110° to cross DWYER at 7000 and at 210K, then on track 095° to cross AYYYY at 6000, then on track 071° to cross PETYR at 5000, then on track 071° or as assigned by ATC. Expect RADAR vectors to ILS or RNAV (RNP) RWY 25L final approach course.

**LOST COMMUNICATIONS**

After PETYR turn left heading 315° and intercept the Rwy 25L localizer, proceed on the ILS RWY 25L approach.

**BAYST ONE ARRIVAL (RNAV)** Arrival Route  
 (BAYST.BAYST1) 24MMAY18

LOS ANGELES, CALIFORNIA  
 LOS ANGELES INTL (LAX)