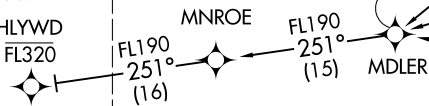


HLYWD ONE ARRIVAL (RNAV) Transition Routes
(HLYWD.HLYWD1) 02MAR17

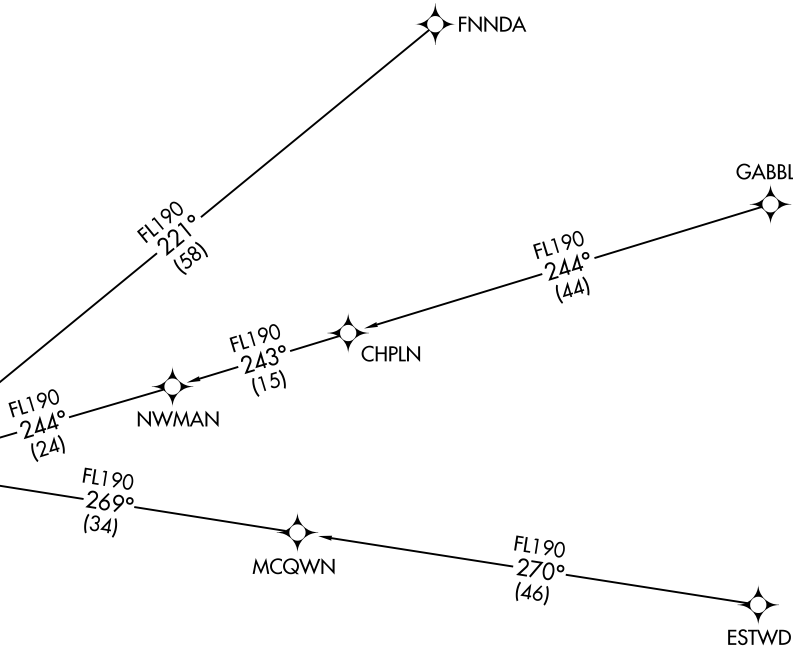
SOCAL APP CON
124.05 353.775
D-ATIS ARR
133.8
LOS ANGELES TOWER
(N) 133.9 239.3
(S) 120.95 379.1



See following page for arrival route.
HLYWD
FL320



10 NM



- NOTE: RADAR required.
- NOTE: RNAV 1.
- NOTE: DME/DME/IRU or GPS required.
- NOTE: Turbojet aircraft only.
- NOTE: Los Angeles landing west traffic.
- NOTE: Expect runway 25L unless otherwise assigned by ATC.
- NOTE: Expect local area altimeter reaching FL230.
- NOTE: MDLER transition ATC only, do not file.

NOTE: Chart not to scale.

(CONTINUED ON FOLLOWING PAGE)

- ESTWD TRANSITION (ESTWD.HLYWD1)
- FNNDNA TRANSITION (FNNDNA.HLYWD1)
- GABBL TRANSITION (GABBL.HLYWD1)
- MDLER TRANSITION (MDLER.HLYWD1)

(HLYWD.HLYWD1) 17117
HLYWD ONE ARRIVAL (RNAV) Transition Routes

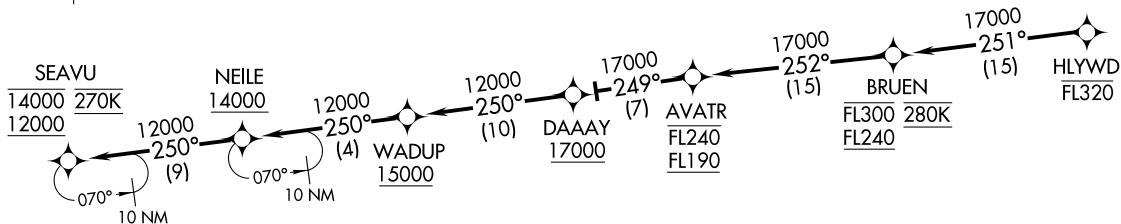
AL-237 (FAA)

LOS ANGELES INTL (LAX)
LOS ANGELES, CALIFORNIA

LOS ANGELES, CALIFORNIA
LOS ANGELES INTL (LAX)

HLYWD ONE ARRIVAL (RNAV) Arrival Routes
(HLYWD:HLYWD1) 02MAR17

SOCAL APP CON
124.05 353.775
D-ATIS ARR
133.8
LOS ANGELES TOWER
(N) 133.9 239.3
(S) 120.95 379.1



(HLYWD:HLYWD1) 17117
HLYWD ONE ARRIVAL (RNAV) Arrival Routes
AL-237 (FAA)

LOS ANGELES INTL (LAX)
LOS ANGELES, CALIFORNIA

LOS ANGELES, CALIFORNIA
LOS ANGELES INTL (LAX)

ARRIVAL ROUTE DESCRIPTION

From HLYWD on track 251° to cross BRUEN between FL240 and FL300 and at 280K, then on track 252° to cross AVATR between FL190 and FL240, then on track 249° to cross DAAAY at or above 17000, then on track 250° to cross WADUP at or above 15000, then on track 250° to cross NEILE at or above 14000, then on track 250° to cross SEAVU between 12000 and 14000 and at 270K. Expect ILS or RNAV (RNP) RWY 25L approach.

LOST COMMUNICATIONS: In the event of lost communication prior to runway assignment proceed on ILS or LOC RWY 25L.

- NOTE: RADAR required.
- NOTE: RNAV 1.
- NOTE: DME/DME/IRU or GPS required.
- NOTE: Turbojet aircraft only.
- NOTE: Los Angeles landing west traffic.
- NOTE: Expect runway 25L unless otherwise assigned by ATC.
- NOTE: Expect local area altimeter reaching FL230.

NOTE: Chart not to scale.