

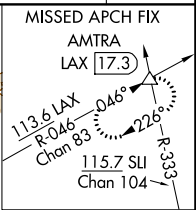
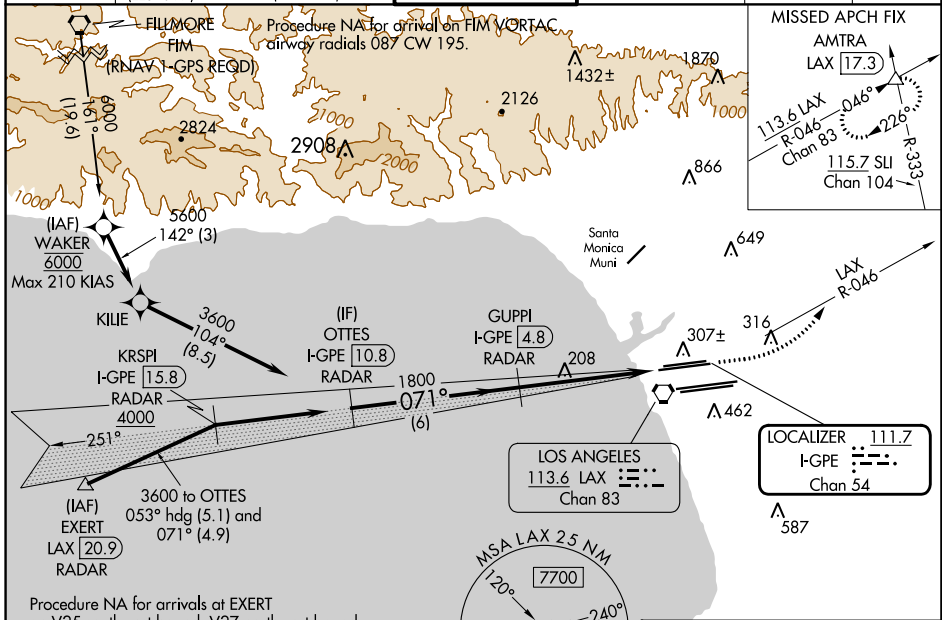
LOC/DME I-GPE <b>111.7</b> Chan <b>54</b>	APP CRS <b>071°</b>	Rwy ldg <b>6R 9748</b> <b>6L 8566</b> TDZE <b>116 119</b> Apt Elev <b>128 128</b>
---	------------------------	---

# ILS or LOC RWY 6R

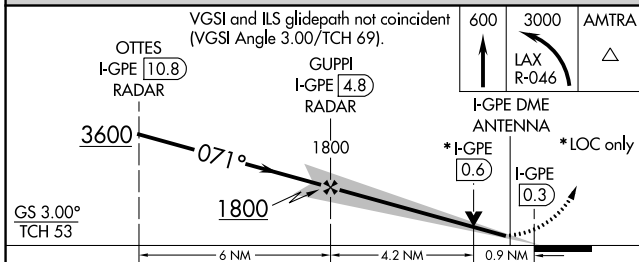
## LOS ANGELES INTL (LAX)

Simultaneous approach authorized. For inop ALS, increase S-LOC 6R Cat C/D visibility to RVR 5500. Inop table does not apply to Sidestep 6L Cats A and B.  
# RVR 1800 authorized with use of FD or AP or HUD to DA.

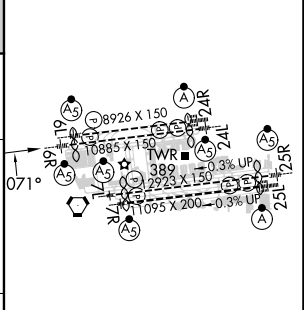
D-ATIS ARR <b>133.8</b> DEP <b>135.65</b>	SOCAL APP CON <b>124.3 363.2</b> [ARCH FM WEST] <b>124.5 235.975</b> [223°-044°]	<b>124.9 269.0</b> [090°-224°] <b>128.5 360.7</b> [045°-089°]	LOS ANGELES TOWER <b>N 133.9 239.3</b> <b>S 120.95 379.1</b>	GND CON <b>N 121.65 327.0</b> <b>S 121.75 327.0</b> <b>W 121.4 327.0</b>	CLNC DEL <b>120.35</b> <b>327.0</b>	CPDLC
---	--	--	--	---	---	-------



**DME or RADAR REQUIRED**



ELEV 128	TDZE 6R 116
	TDZE 6L 119



CATEGORY	A	B	C	D
S-ILS 6R#	316/24 200 (200-1/2)			
S-LOC 6R	460/24 344 (400-1/2)		460/30 344 (400-5/8)	
SIDESTEP 6L	460/55 341 (400-1)			460-1 1/2 341 (400-1/2)

TDZ/CL Rwy 6R, 7L, 24R, and 25L HIRL all Rwy					
FAF to MAP 5.1 NM					
Knots	60	90	120	150	180
Min:Sec	5:06	3:24	2:33	2:02	1:42

SW-3, 03 OCT 2024 to 31 OCT 2024

SW-3, 03 OCT 2024 to 31 OCT 2024