

LAXX ONE DEPARTURE
(LAXX1 .SU) 17AUG17

LOS ANGELES, CALIFORNIA
LOS ANGELES INTL (LAX)

**TOP ALTITUDE:
ASSIGNED BY ATC**

SANTA MONICA
110.8 SMO Chan 45

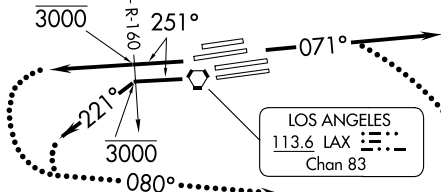
TAKEOFF MINIMUMS

Rwy 6L/R, 7L/R, 24L/R, 25L/R: Standard.

NOTE: This departure is for turbojet aircraft only.

NOTE: RADAR and DME required.

SOCAL DEP CON
124.3 363.2 (045°-224°)
125.2 263.025 (225°-044°)
D-ATIS DEP
135.65
CLNC DEL
120.35 327.0
CPDLC
GND CON
(N) 121.65 327.0
(S) 121.75 327.0
(W) 121.4 327.0
LOS ANGELES TOWER
(N) 133.9 239.3
(S) 120.95 379.1



South complex turn at SMO R-160 to 221° is required for ATC separation.

SEAL BEACH
115.7 SU Chan 104
4000

SANTA CATALINA
114.15 SXC Chan 88(Y)

GOATZ
12000
213° (63)

MALIT
16000
213° (47)

ROSIN

FICKY

Expect clearance to FICKY then on assigned route.

(CONTINUED ON FOLLOWING PAGE)

OCEANSIDE
115.3 OCN Chan 100

MISSION BAY
117.8 MZB Chan 125

POMONA
110.4 POM Chan 41

TUSTI
8000

EL TORO
117.2 ELB Chan 119

DANAH

CARIF

JULIAN
114.0 JLI Chan 87

IMPERIAL
115.9 IPL Chan 106

MISSION BAY
117.8 MZB Chan 125

PILLO
8500
076° (49)

THERMAL
116.2 TRM Chan 109

NOTE: Chart not to scale.

(LAXX1 .SU) 23334
LAXX ONE DEPARTURE

AL-237 (FAA)

LOS ANGELES INTL (LAX)
LOS ANGELES, CALIFORNIA



DEPARTURE ROUTE DESCRIPTION

TAKEOFF RUNWAYS 6L/R, 7L/R: Climb heading 071° for vectors to SLI VORTAC, thence. . . .

TAKEOFF RUNWAYS 24L/R: Climb on heading 251° to cross SMO R-160 at or below 3000, then on RADAR vectors to assigned route/fix/transition, thence. . . .

TAKEOFF RUNWAYS 25L/R: Climb on heading 251°, at the SMO R-160 turn left heading 221°, cross SMO R-160 at or below 3000, expect RADAR vectors to assigned route/fix/transition thence. . . .

. . . .all aircraft expect further clearance to filed flight level five minutes after departure.

IMPERIAL TRANSITION (LAXX1.IPL): From over SLI VORTAC on SLI R-120 to DANAH, then on OCN R-301 to OCN VORTAC, then on OCN R-105 to PILLO, then on MZB R-076 and IPL R-258 to IPL VORTAC.

MISSION BAY TRANSITION (LAXX1.MZB): From over SLI VORTAC on SLI R-120 to DANAH, then on OCN R-301 to OCN VORTAC, then on OCN R-145 to CARIF, then on MZB R-326 to MZB VORTAC.

OCEANSIDE TRANSITION (LAXX1.OCN): From over SLI VORTAC on SLI R-120 to DANAH, then on OCN R-301 to OCN VORTAC.

ROSIN TRANSITION (LAXX1.ROSIN): From over SLI VORTAC on SLI R-202 and SXC R-022 to SXC VORTAC, then on SXC R-213 to ROSIN.

THERMAL TRANSITION (LAXX1.TRM): From over SLI VORTAC on SLI R-080 to TUSTI, then on SLI R-080 and TRM R-263 to HEMET, then on TRM R-263 to TRM VORTAC.

LOST COMMUNICATIONS

RUNWAYS 6L/R, 7L/R: If not in contact with Departure Control within five minutes after departure, climb to FL230 or filed altitude whichever is lower, turn right direct SLI VORTAC and proceed on assigned route. Aircraft filed FL240 or above, maintain FL230 for five minutes then continue climb to filed altitude.

RUNWAYS 24L/R, 25L/R: If not in contact with Departure Control within five minutes after departure, turn left heading 080°, climb to FL230 or filed altitude whichever is lower, and when able proceed direct filed or assigned route. Aircraft filed FL240 or above, maintain FL230 for five minutes then continue climb to filed altitude.

SW-3, 03 OCT 2024 to 31 OCT 2024

SW-3, 03 OCT 2024 to 31 OCT 2024