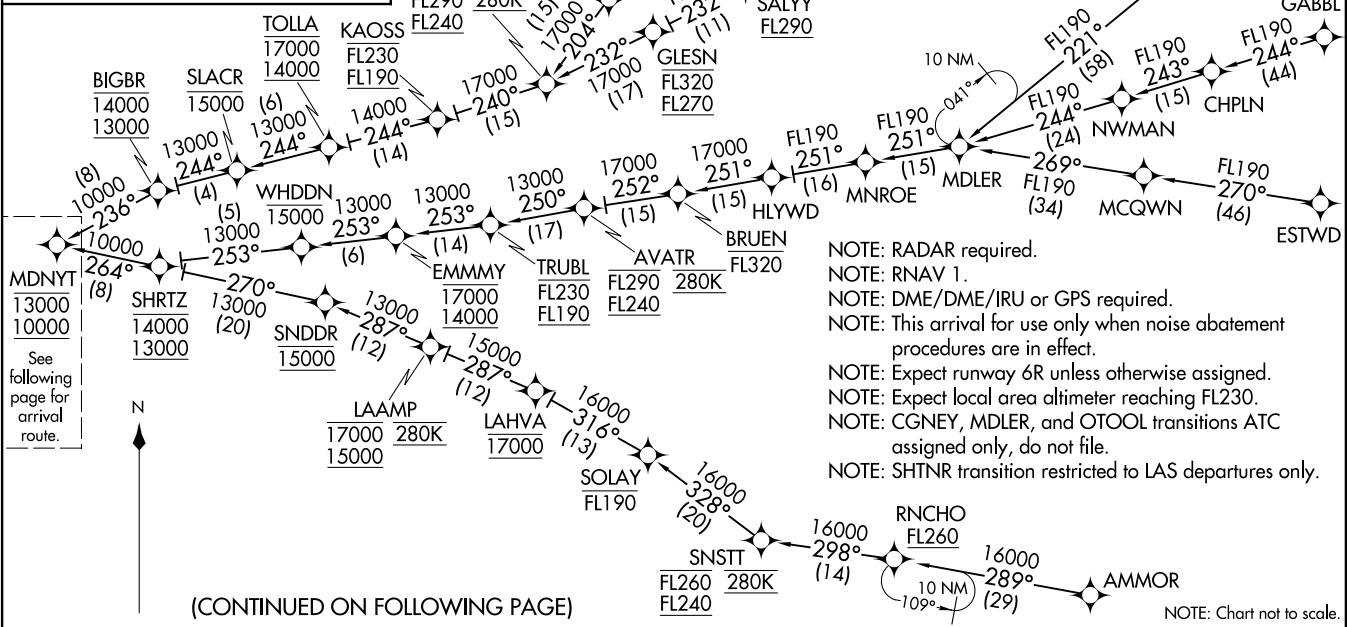


MDNYT TWO ARRIVAL (RNAV) (MDNYT.MDNYT2) 120CT17

MDNYT TWO ARRIVAL (RNAV) Transition Routes

- AMMOR TRANSITION (AMMOR.MDNYT2)
- CGNEY TRANSITION (CGNEY.MDNYT2)
- DNERO TRANSITION (DNERO.MDNYT2)
- ESTWD TRANSITION (ESTWD.MDNYT2)
- FNND A TRANSITION (FNND A.MDNYT2)
- GABBL TRANSITION (GABBL.MDNYT2)
- HAKMN TRANSITION (HAKMN.MDNYT2)
- MDLER TRANSITION (MDLER.MDNYT2)
- OTOOL TRANSITION (OTOOL.MDNYT2)
- SHTNR TRANSITION (SHTNR.MDNYT2)

SOCAL APP CON
 124.05 353.775
 D-ATIS ARR
 133.8
 LOS ANGELES TOWER
 (N) 133.9 239.3
 (S) 120.95 379.1



(CONTINUED ON FOLLOWING PAGE)

- NOTE: RADAR required.
- NOTE: RNAV 1.
- NOTE: DME/DME/IRU or GPS required.
- NOTE: This arrival for use only when noise abatement procedures are in effect.
- NOTE: Expect runway 6R unless otherwise assigned.
- NOTE: Expect local area altimeter reaching FL230.
- NOTE: CGNEY, MDLER, and OTOOL transitions ATC assigned only, do not file.
- NOTE: SHTNR transition restricted to LAS departures only.

NOTE: Chart not to scale.

(MDNYT.MDNYT2) 17285

AL-237 (FAAI)

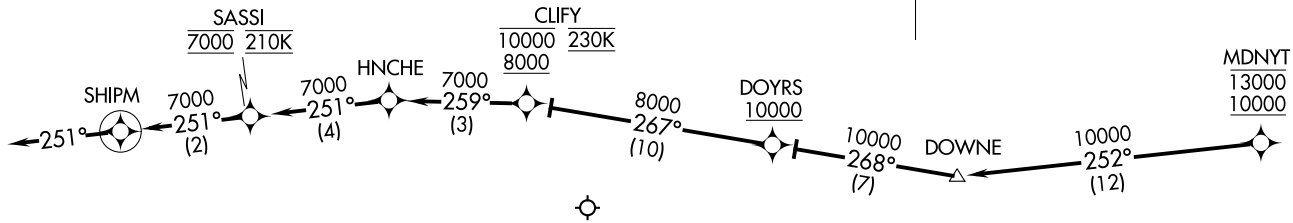
LOS ANGELES INTL (LAX)
LOS ANGELES, CALIFORNIA

LOS ANGELES, CALIFORNIA
LOS ANGELES INTL (LAX)

MDNYT TWO ARRIVAL (RNAV) 120CT17

MDNYT TWO ARRIVAL (RNAV) Arrival Routes

SOCAL APP CON
124.05 353.775
D-ATIS ARR
133.8
LOS ANGELES TOWER
(N) 133.9 239.3
(S) 120.95 379.1



- NOTE: RADAR required.
- NOTE: RNAV 1.
- NOTE: DME/DME/IRU or GPS required.
- NOTE: This arrival for use only when noise abatement procedures are in effect.
- NOTE: Expect runway 6R unless otherwise assigned.
- NOTE: Expect local area altimeter reaching FL230.

NOTE: Chart not to scale.

ARRIVAL ROUTE DESCRIPTION

LANDING RUNWAYS 6L/R: From MDNYT on track 252° to DOWNE, then on track 268° to cross DOYRS at or above 10000, then on track 267° to cross CLIFY between 8000 and 10000 and at 230K, then on track 259° to HNCHE, then on track 251° to cross SASSI at 7000 and at 210K, then on track 251° to SHIPM, then on track 251°. Expect RADAR vectors to ILS or RNAV (RNP) RWY 6R final approach course.

LOST COMMUNICATIONS: In the event of lost communication proceed on the RNAV (RNP) RWY 6R or ILS or LOC RWY 6R approach.

LOS ANGELES, CALIFORNIA
LOS ANGELES INTL (LAX)

(MDNYT,MDNYT2) 17285

AL-237 (FAA)
MDNYT TWO ARRIVAL (RNAV) Arrival Routes

LOS ANGELES INTL (LAX)
LOS ANGELES, CALIFORNIA