

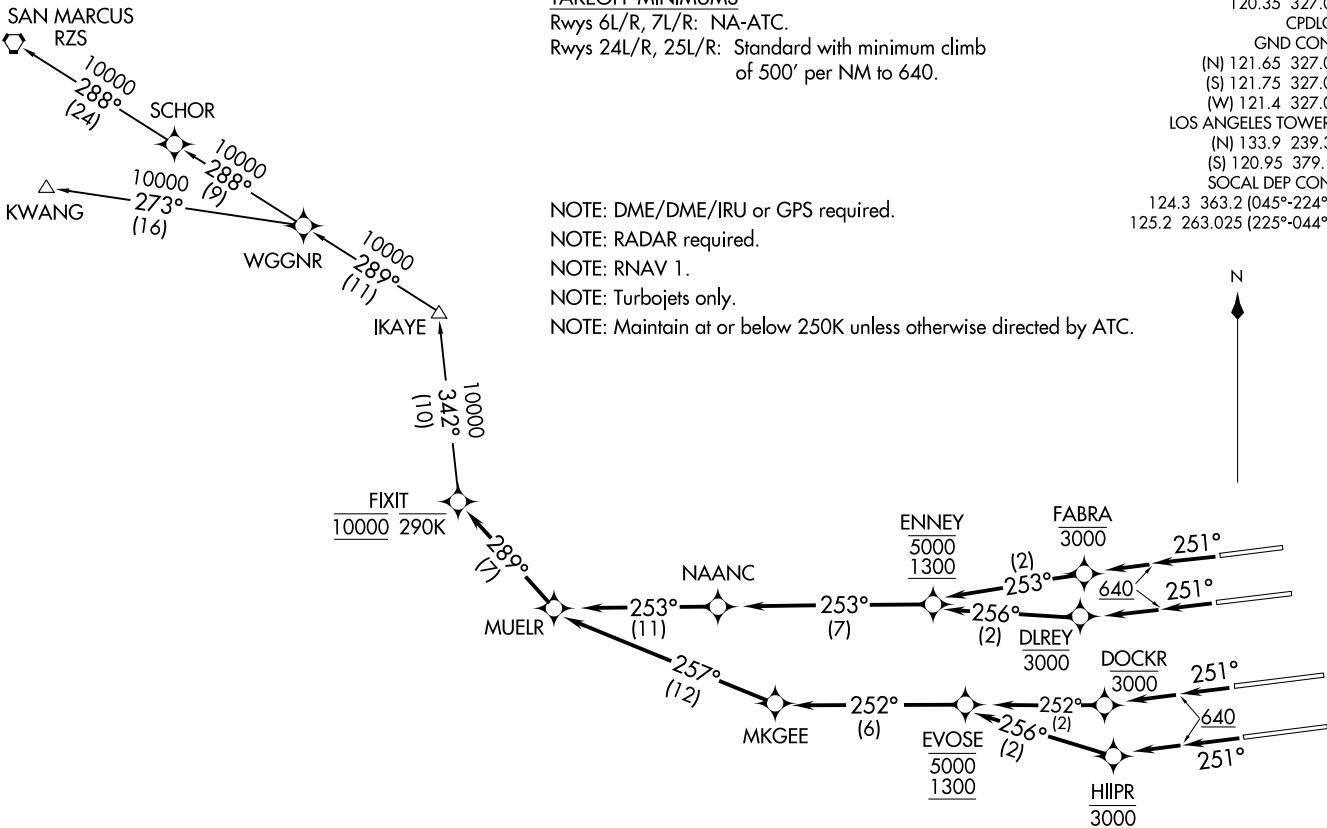
MUCLR FOUR DEPARTURE (RNAV)  
(MUCLR4.FIXT) 17AUG17

(MUCLR4.FIXT) 17229  
MUCLR FOUR DEPARTURE (RNAV)

AL-237 (FAA)

LOS ANGELES INTL (LAX)  
LOS ANGELES, CALIFORNIA

**TOP ALTITUDE:  
10000**



**TAKEOFF MINIMUMS**

Rwys 6L/R, 7L/R: NA-ATC.

Rwys 24L/R, 25L/R: Standard with minimum climb of 500' per NM to 640.

NOTE: DME/DME/IRU or GPS required.

NOTE: RADAR required.

NOTE: RNAV 1.

NOTE: Turbojets only.

NOTE: Maintain at or below 250K unless otherwise directed by ATC.



NOTE: Chart not to scale.

(NARRATIVE ON FOLLOWING PAGE)

LOS ANGELES, CALIFORNIA  
LOS ANGELES INTL (LAX)

LOS ANGELES, CALIFORNIA  
LOS ANGELES INTL (LAX)



DEPARTURE ROUTE DESCRIPTION

TAKEOFF RUNWAY 24L: Climb on heading 251° to 640, then climb direct to cross DLREY at or below 3000, then on track 256° to cross ENNEY at or above 1300 and at or below 5000, then on depicted route to cross FIXIT at 10000, thence. . . .

TAKEOFF RUNWAY 24R: Climb on heading 251° to 640, then climb direct to cross FABRA at or below 3000, then on track 253° to cross ENNEY at or above 1300 and at or below 5000, then on depicted route to cross FIXIT at 10000, thence. . . .

TAKEOFF RUNWAY 25L: Climb on heading 251° to 640, then climb direct to cross HIIPR at or below 3000, then on track 256° to cross EVOSE at or above 1300 and at or below 5000, then on depicted route to cross FIXIT at 10000, thence. . . .

TAKEOFF RUNWAY 25R: Climb on heading 251° to 640, then climb direct to cross DOCKR at or below 3000, then on track 252° to cross EVOSE at or above 1300 and at or below 5000, then on depicted route to cross FIXIT at 10000, thence. . . .

. . . . on (transition). Maintain 10000. Expect filed altitude five minutes after departure.

KWANG TRANSITION (MUEL4.KWANG)

SAN MARCUS TRANSITION (MUEL4.RZS)

SW-3, 03 OCT 2024 to 31 OCT 2024

SW-3, 03 OCT 2024 to 31 OCT 2024