

OLAAA TWO ARRIVAL (RNAV)

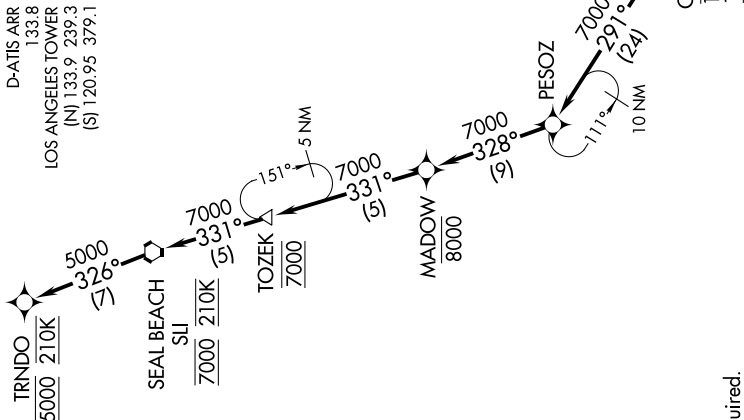
SW-3, 03 OCT 2024 to 31 OCT 2024

ARRIVAL ROUTE DESCRIPTION

From AMMOR on track 289° to cross RNCHO at or above FL260, then on track 282° to cross REGGO at or above FL240, then on track 268° to cross CYNDE at or below 14000, then on track 291° to cross OLAAA between 12000 and 13000, then on track 291° to PESOZ, then on track 328° to cross MADOW at or below 8000, then on track 331° to cross TOZEK at 7000, then on track 331° to cross SJI VORTAC at 7000 and at 210K, then on track 326° to cross TRNDO at 5000 and at 210K. Expect RADAR vectors to ILS or RNAV (RNP) RWY 25L final approach course.

LOST COMMUNICATIONS: In the event of lost communication, proceed on the RNAV (RNP) RWY 25L or the ILS or LOC RWY 25L approach.

SOCAL APP CON
128.1 281.4
D-ATIS ARR
133.8
LOS ANGELES TOWER
(N) 133.9 239.3
(S) 120.95 379.1



- NOTE: RADAR required.
- NOTE: RNAV 1.
- NOTE: DME/DME/IRU or GPS required.
- NOTE: Expect runway 25L unless otherwise assigned by ATC.
- NOTE: Non-RNP AR aircraft expect RADAR vectors to final approach course after SJI VORTAC.
- NOTE: Chart not to scale.

SW-3, 03 OCT 2024 to 31 OCT 2024

OLAAA TWO ARRIVAL (RNAV)